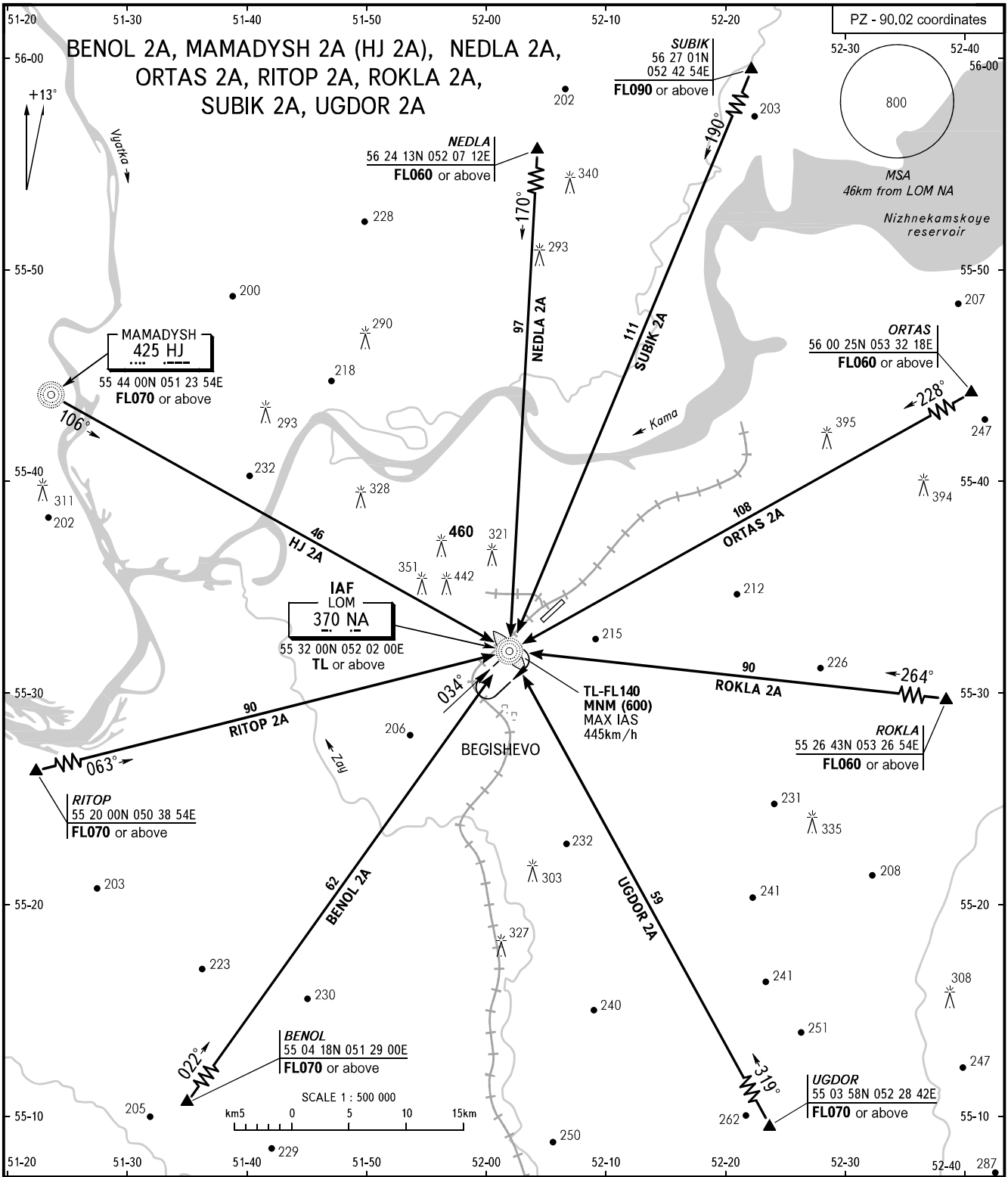


STANDARD ARRIVAL CHART  
INSTRUMENT (STAR) - ICAO

BEGISHEVO, RUSSIA  
BEGISHEVO  
RWY 03

TRANSITION  
LEVEL : **1**



TOWER **121.200**  
RADAR **127.900**

**1** TRANSITION LEVEL:  
- FL040 when atmospheric pressure is 742mm mercury column or above;  
- FL050 when atmospheric pressure is 715mm mercury column or above but less than 742mm mercury column;  
- FL060 when atmospheric pressure is less than 715mm mercury column.

BEARINGS AND TRACKS ARE MAGNETIC  
ALTITUDES, HEIGHTS AND ELEVATIONS ARE IN METRES  
DISTANCES ARE IN KILOMETRES

CHANGE: HLDG, OBST, MSA