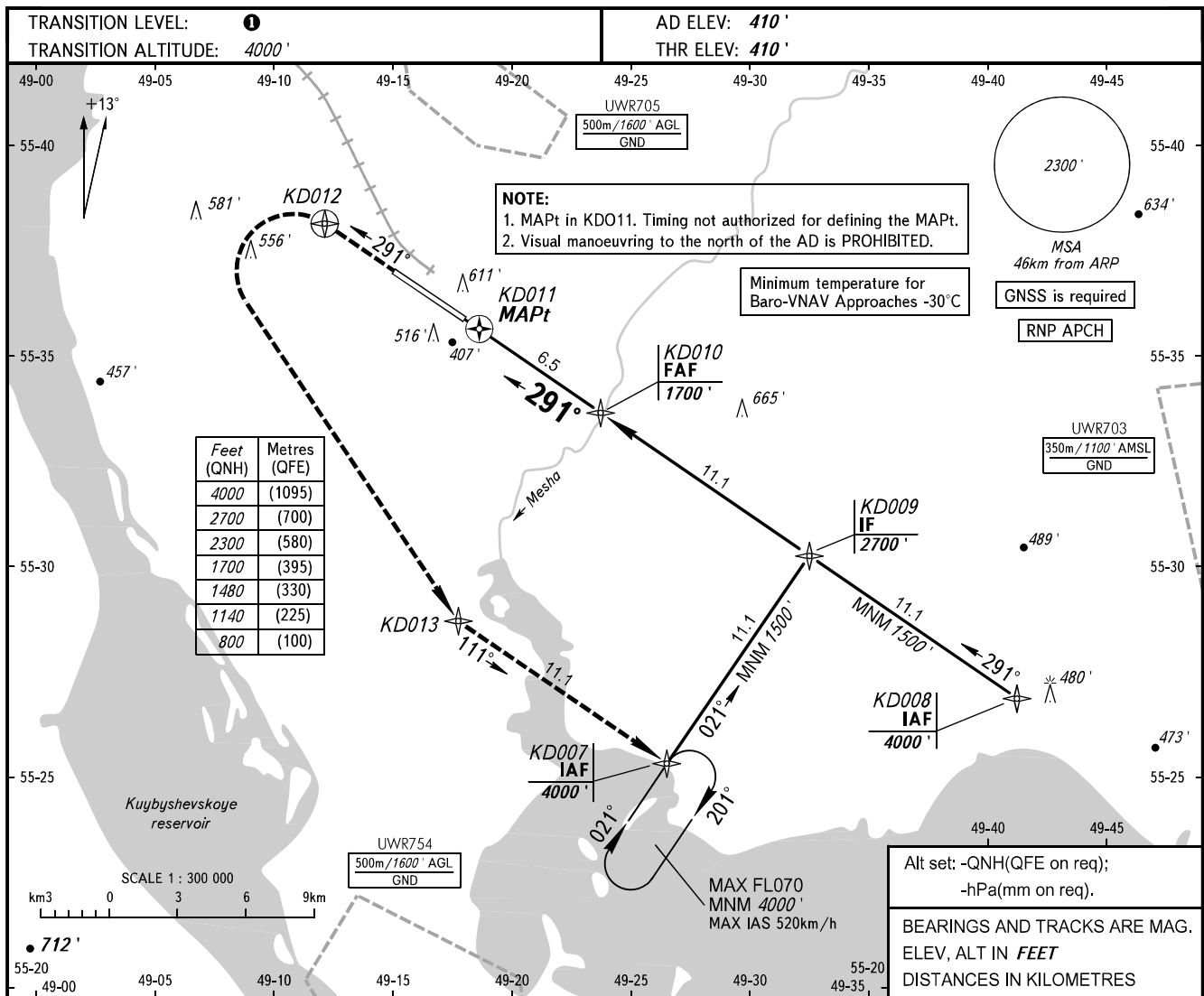


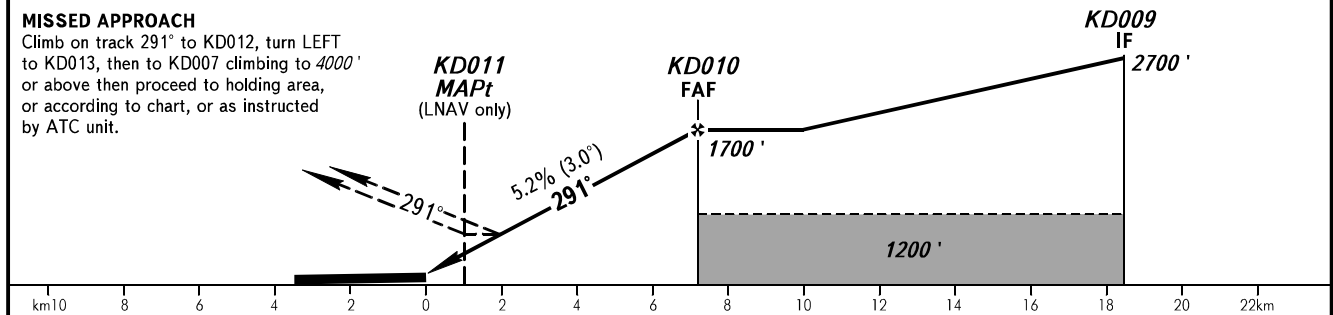
**INSTRUMENT
APPROACH
CHART - ICAO**

RADAR START **119.400**
START **120.300**

KAZAN, RUSSIA
KAZAN
RNAV RWY 29



DIST to RW29	2.0	4.0	6.0	7.3
ALTITUDE	800'	1140'	1480'	1700'



OCA(H)		A	B	C	D
Straight-in	LNAV	780' (370')	780' (370')	780' (370')	780' (370')
	LNAV/VNAV	780' (370')	780' (370')	780' (370')	780' (370')
Circling		820' (410')	910' (500')	1010' (600')	1100' (690')

① **TRANSITION LEVEL:**
- FL050 when QNH is 1013 hPa (760mm mercury column) or above;
- FL060 when QNH is 977 hPa (733mm mercury column) or above, but less than 1013 hPa (760mm mercury column);
- FL070 when QNH is less than 977 hPa (733mm mercury column).

GROUND SPEED	km/h	150	180	210	240	270	300	330	360	390	420	450
RATE OF DESCENT	m/s	2.2	2.6	3.0	3.5	3.9	4.3	4.8	5.2	5.6	6.1	6.5
	ft/min	430	516	602	688	774	860	946	1032	1118	1204	1290