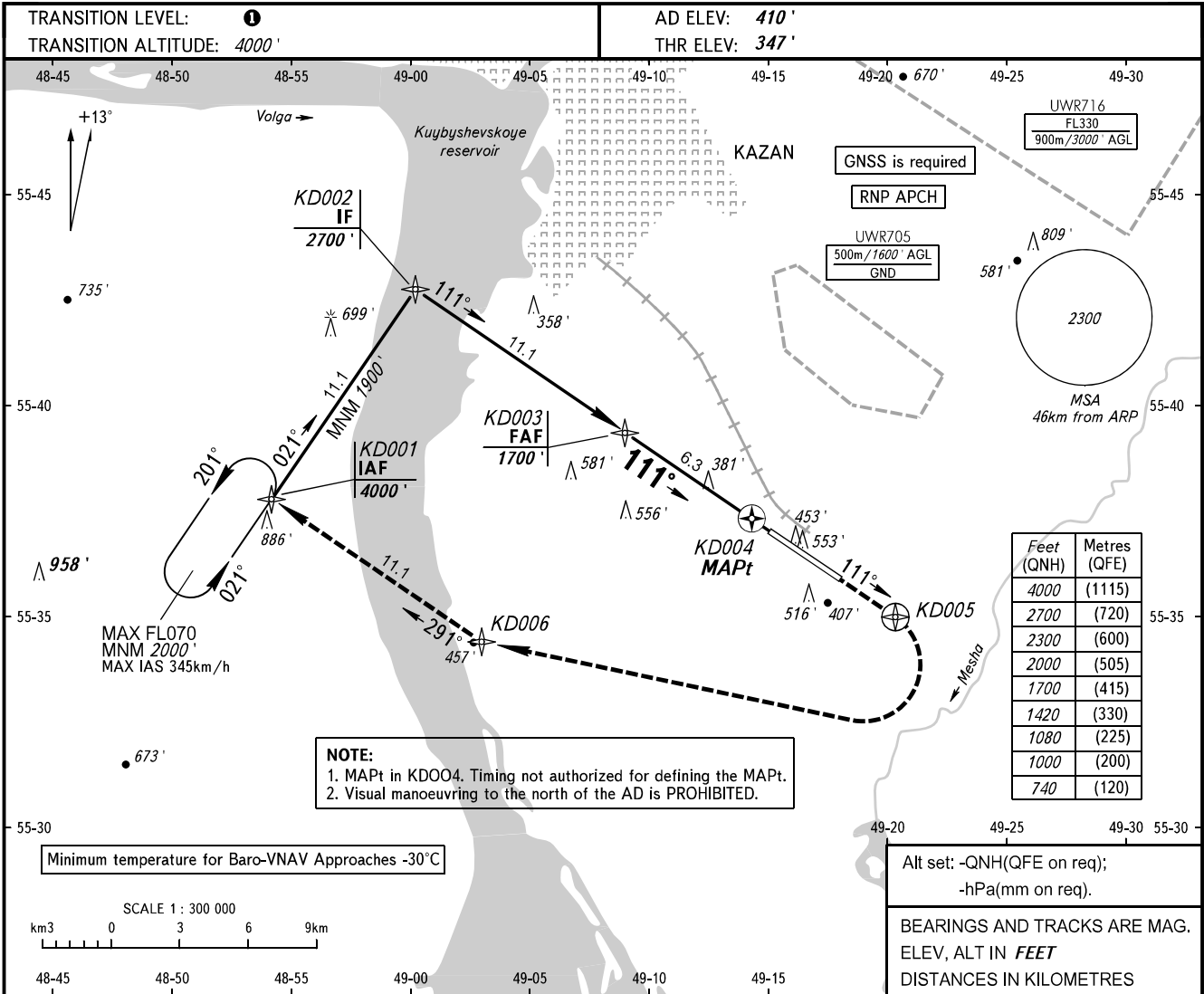


**INSTRUMENT
APPROACH
CHART - ICAO**

**KAZAN, RUSSIA
KAZAN
RNAV RWY 11**

RADAR START **119.400**
START **120.300**

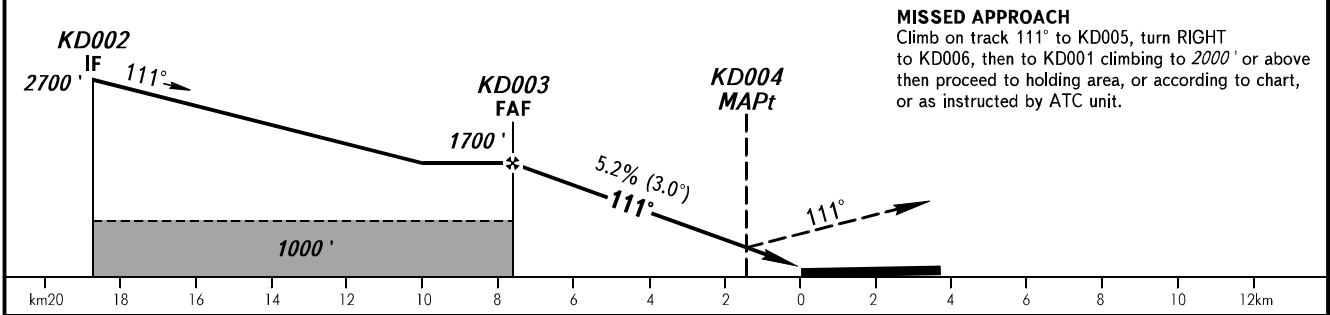


NOTE:
1. MAPt in KD004. Timing not authorized for defining the MAPt.
2. Visual manoeuvring to the north of the AD is PROHIBITED.

| Feet (QNH) | Metres (QFE) |
|------------|--------------|
| 4000 | (1115) |
| 2700 | (720) |
| 2300 | (600) |
| 2000 | (505) |
| 1700 | (415) |
| 1420 | (330) |
| 1080 | (225) |
| 1000 | (200) |
| 740 | (120) |

Alt set: -QNH(QFE on req);
-hPa(mm on req).
BEARINGS AND TRACKS ARE MAG.
ELEV, ALT IN FEET
DISTANCES IN KILOMETRES

| | | | | |
|--------------|-------|-------|-------|------|
| DIST to RW11 | 7.6 | 6.0 | 4.0 | 2.0 |
| ALTITUDE | 1700' | 1420' | 1080' | 740' |



MISSED APPROACH
Climb on track 111° to KD005, turn RIGHT to KD006, then to KD001 climbing to 2000' or above then proceed to holding area, or according to chart, or as instructed by ATC unit.

| OCA(H) | | A | B | C | D | ① TRANSITION LEVEL: - FL050 when QNH is 1013 hPa (760mm mercury column) or above; - FL060 when QNH is 977 hPa (733mm mercury column) or above, but less than 1013 hPa (760mm mercury column); - FL070 when QNH is less than 977 hPa (733mm mercury column). | | | | | | | | | |
|----------------------|-----------|-------------|-------------|--------------|--------------|---|-----|-----|-----|------|------|------|------|--|--|
| Straight-in Approach | LNAV | 630' (290') | 630' (290') | 630' (290') | 630' (290') | | | | | | | | | | |
| | LNAV/VNAV | 620' (270') | 620' (270') | 620' (270') | 620' (270') | | | | | | | | | | |
| Circling | | 820' (410') | 910' (500') | 1010' (600') | 1100' (690') | | | | | | | | | | |
| GROUND SPEED | | km/h | 150 | 180 | 210 | 240 | 270 | 300 | 330 | 360 | 390 | 420 | 450 | | |
| RATE OF DESCENT | | m/s | 2.2 | 2.6 | 3.0 | 3.5 | 3.9 | 4.3 | 4.8 | 5.2 | 5.6 | 6.1 | 6.5 | | |
| | | ft/min | 430 | 516 | 602 | 688 | 774 | 860 | 946 | 1032 | 1118 | 1204 | 1290 | | |

CHANGE: New chart