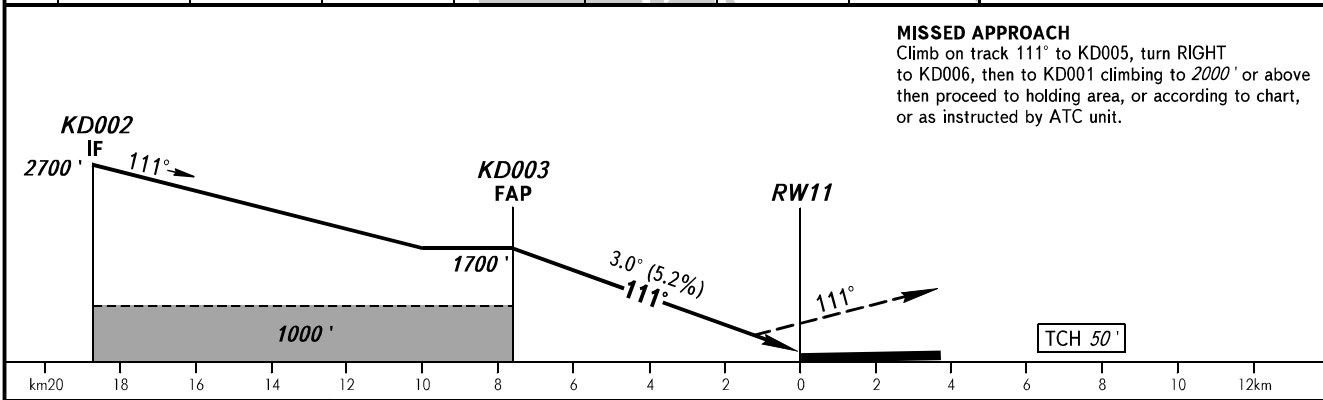
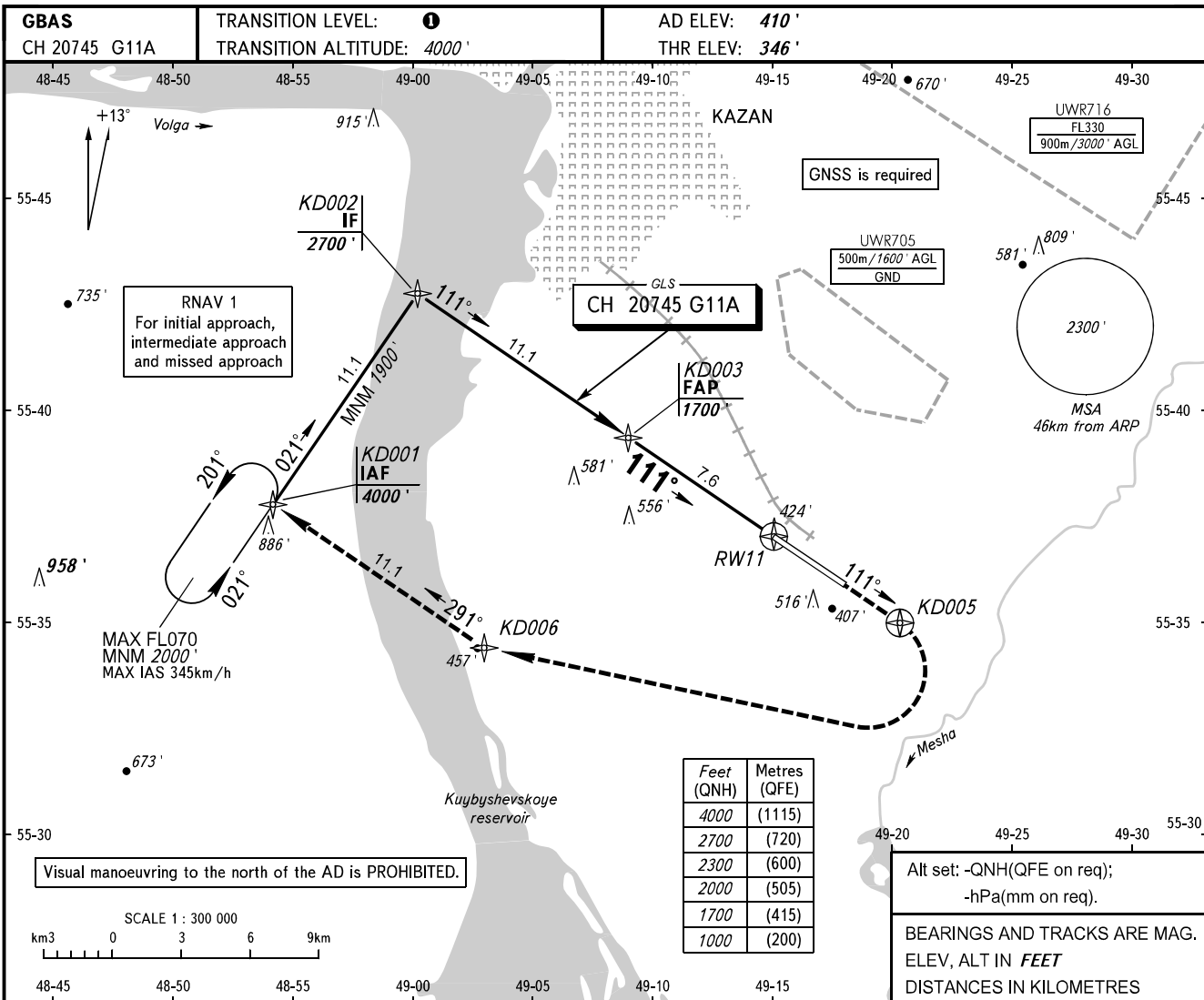


**INSTRUMENT
APPROACH
CHART - ICAO**

RADAR **119.400**
START **120.300**

KAZAN, RUSSIA
KAZAN
GLS RWY 11



OCA(H)		A	B	C	D	1 TRANSITION LEVEL: - FL050 when QNH is 1013 hPa (760mm mercury column) or above; - FL060 when QNH is 977 hPa (733mm mercury column) or above, but less than 1013 hPa (760mm mercury column); - FL070 when QNH is less than 977 hPa (733mm mercury column).							
Straight-in Approach	CAT I	555' (208')	565' (218')	575' (228')	584' (238')								
Circling		820' (410')	910' (500')	1010' (600')	1100' (690')								
GROUND SPEED		km/h	150	180	210	240	270	300	330	360	390	420	450
RATE OF DESCENT		m/s	2.2	2.6	3.0	3.5	3.9	4.3	4.8	5.2	5.6	6.1	6.5
		ft/min	430	516	602	688	774	860	946	1032	1118	1204	1290

CHANGE: New chart