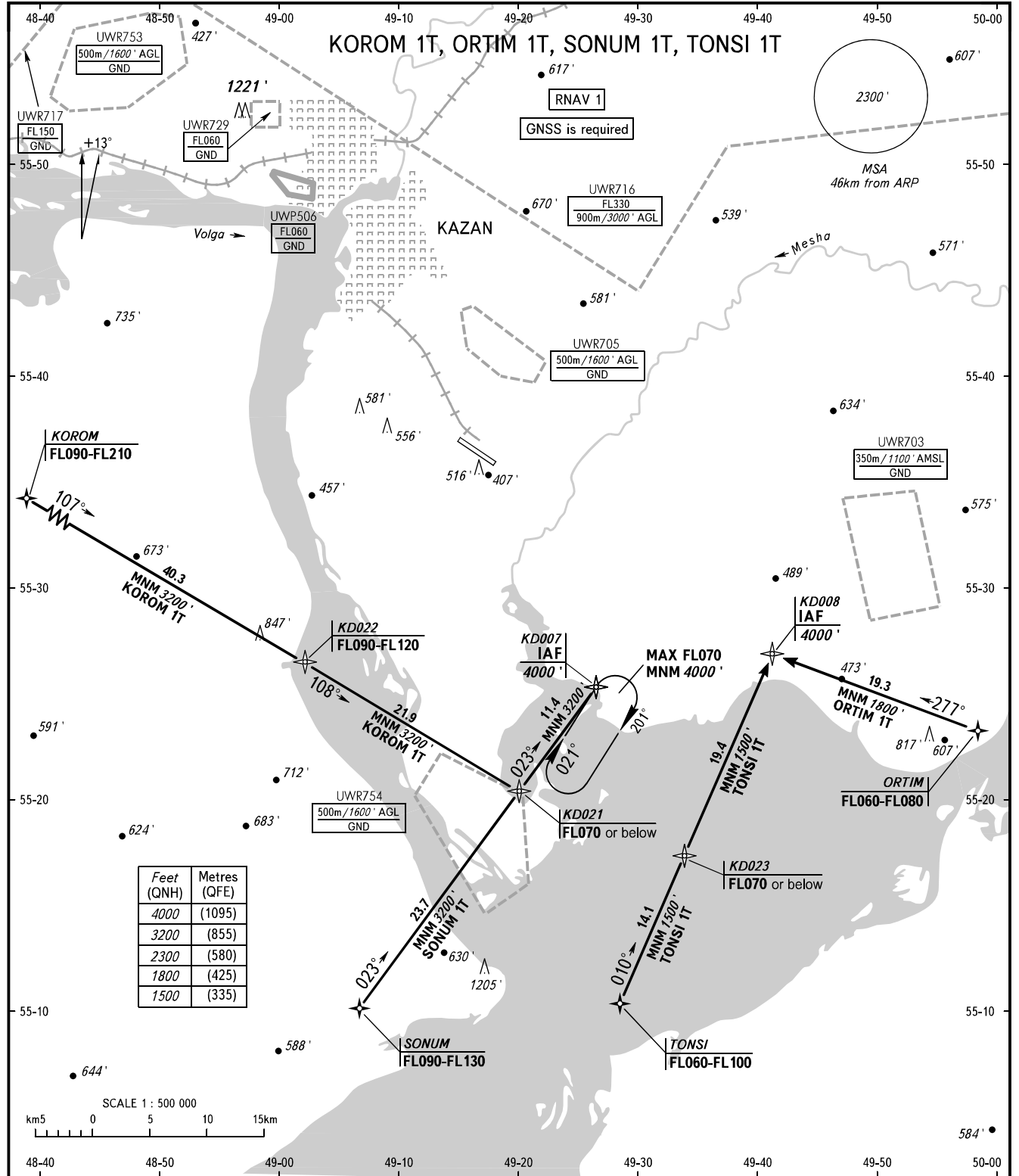


STANDARD ARRIVAL CHART  
INSTRUMENT (STAR) - ICAO

KAZAN, RUSSIA  
KAZAN  
RNAV RWY 29

TRANSITION  
LEVEL: **1**



APPROACH Sector WEST **135.225**  
Sector EAST **128.625**  
RADAR **119.400**  
START **120.300**

**1** TRANSITION LEVEL:  
- FL050 when QNH is 1013 hPa (760mm mercury column) or above;  
- FL060 when QNH is 977 hPa (733mm mercury column) or above,  
but less than 1013 hPa (760mm mercury column);  
- FL070 when QNH is less than 977 hPa (733mm mercury column).

BEARINGS AND TRACKS ARE MAGNETIC  
ALTITUDES AND ELEVATIONS IN FEET  
DISTANCES IN KILOMETRES