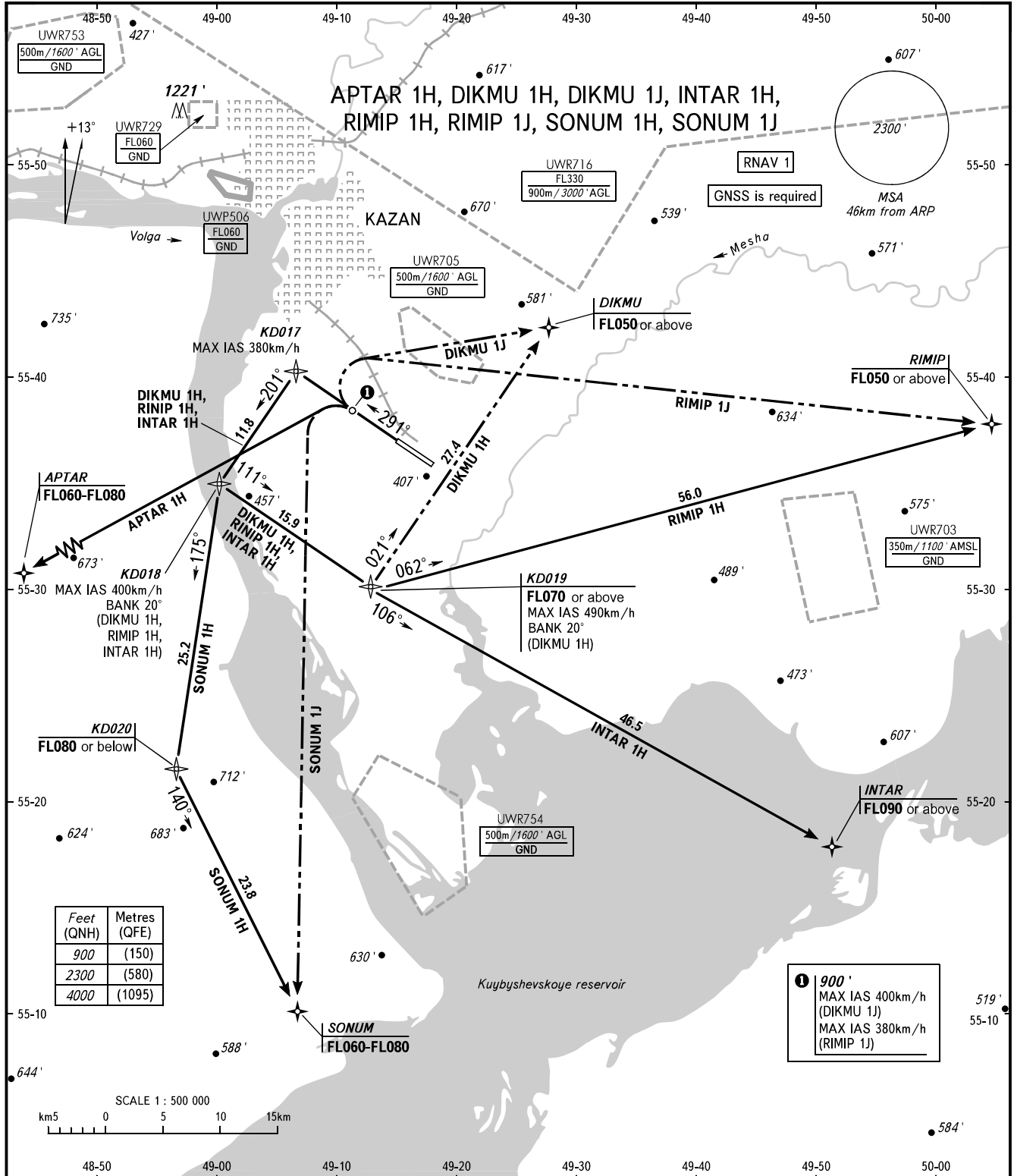


STANDARD DEPARTURE CHART  
INSTRUMENT (SID) - ICAO

TRANSITION  
ALTITUDE : 4000'

KAZAN, RUSSIA  
KAZAN  
RNAV RWY 29



Feet (QNH)	Metres (QFE)
900	(150)
2300	(580)
4000	(1095)

**1** 900'  
MAX IAS 400km/h  
(DIKMU 1J)  
MAX IAS 380km/h  
(RIMIP 1J)

APPROACH Sector WEST	135.225
Sector EAST	128.625
RADAR START	119.400
START	120.300

**NOTE**  
The minimum climb gradient is as follows:  
- 5.9% up to FL070 for SID DIKMU 1H, INTAR 1H, RIMIP 1H.  
SID DIKMU 1J, SID DIKMU 1H, SID RIMIP 1J, SID SONUM 1J shall be executed by coordination with ATC.

BEARINGS AND TRACKS ARE MAGNETIC  
ALTITUDES AND ELEVATIONS IN FEET  
DISTANCES IN KILOMETRES