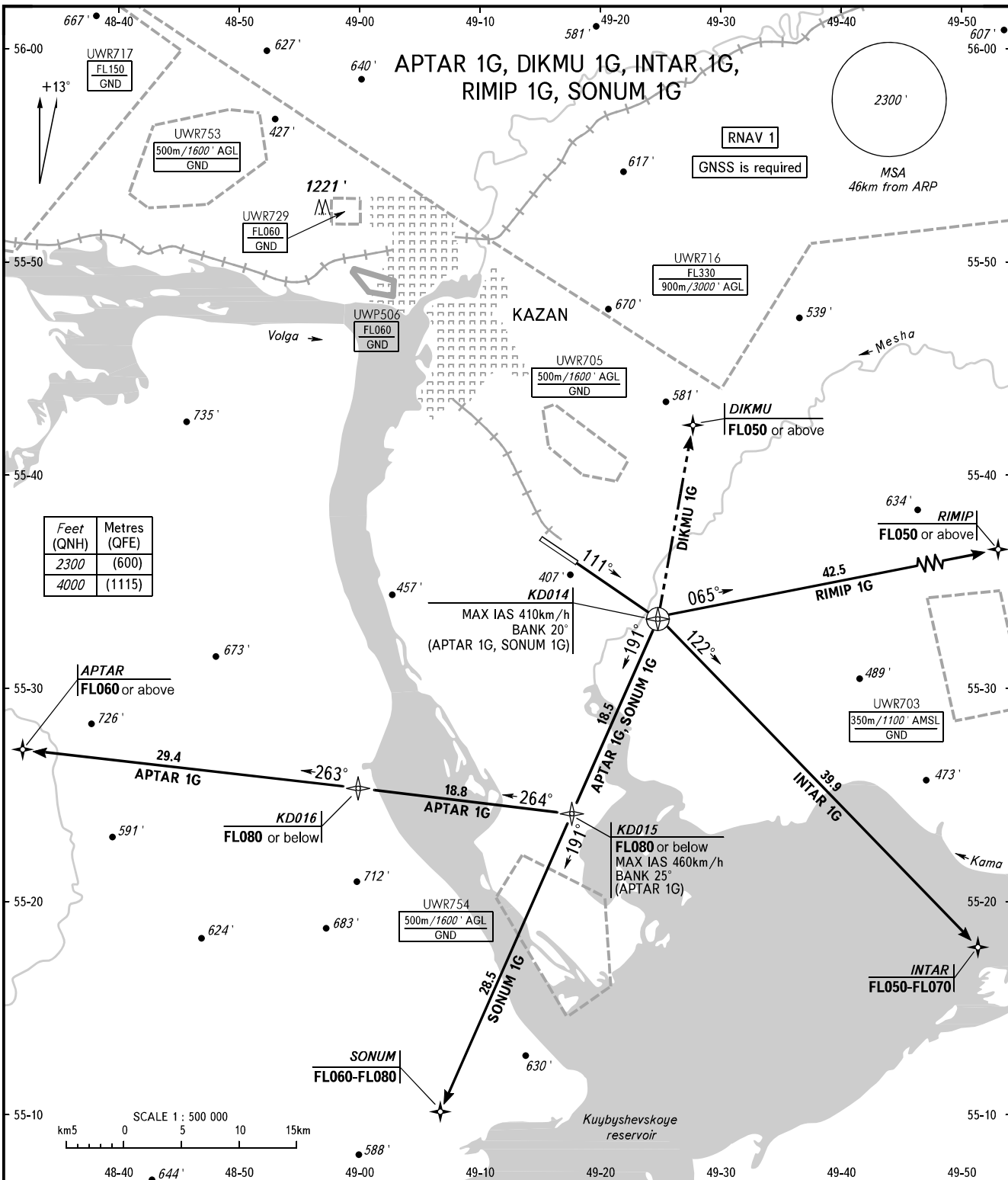


STANDARD DEPARTURE CHART  
INSTRUMENT (SID) - ICAO

KAZAN, RUSSIA  
KAZAN  
RNAV RWY 11

TRANSITION  
ALTITUDE : 4000'



Feet (QNH)	Metres (QFE)
2300	(600)
4000	(1115)

APPROACH Sector WEST	135.225	NOTE SID DIKMU 1G shall be executed by coordination with ATC.
Sector EAST	128.625	
RADAR START	119.400	
START	120.300	

BEARINGS AND TRACKS ARE MAGNETIC  
ALTITUDES AND ELEVATIONS IN FEET  
DISTANCES IN KILOMETRES

CHANGE: New chart