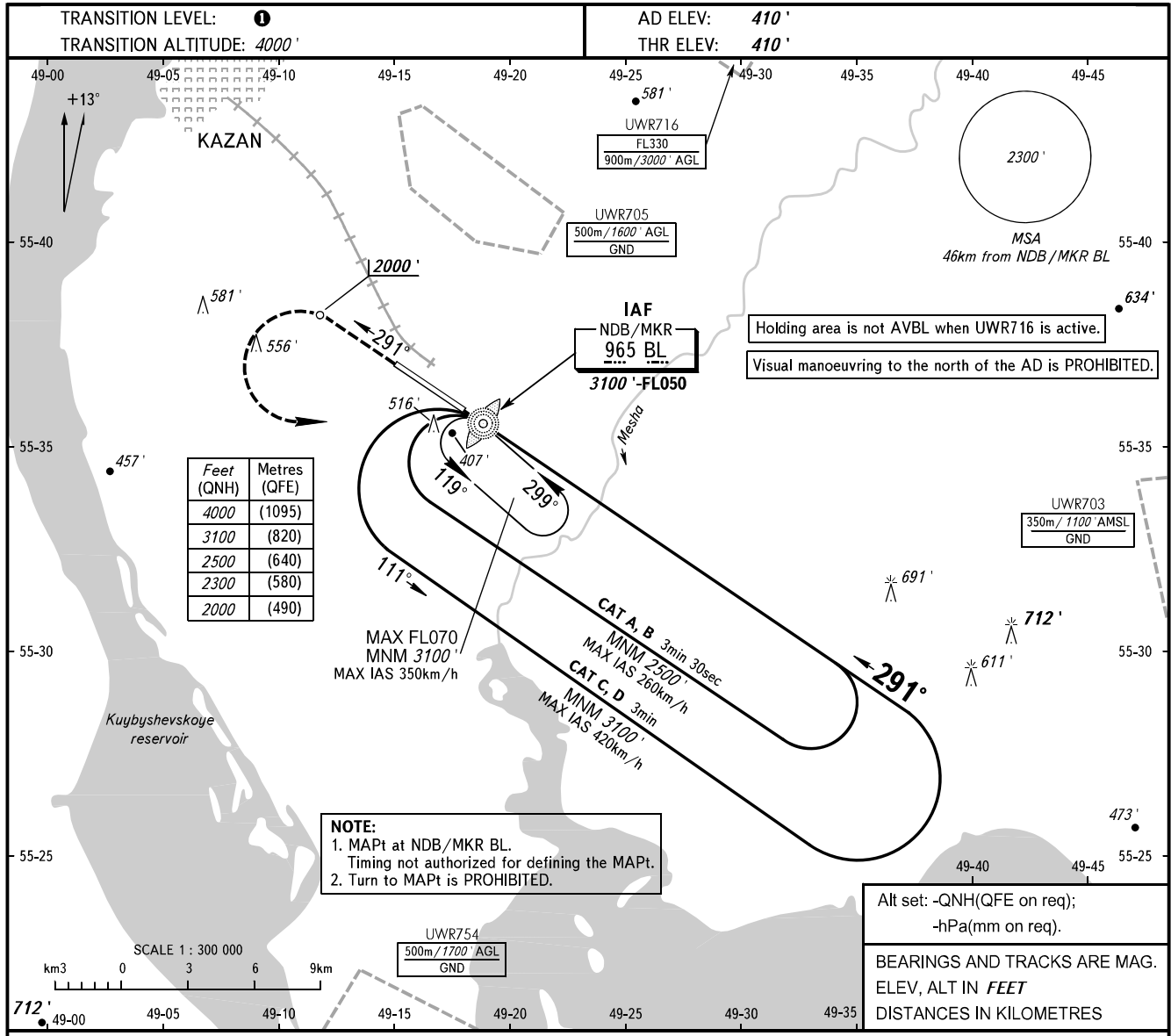


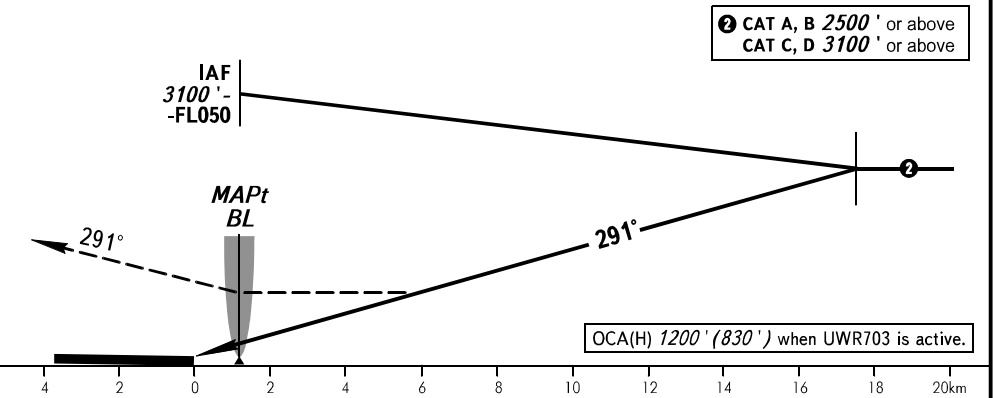
**INSTRUMENT
APPROACH
CHART - ICAO**

**KAZAN, RUSSIA
KAZAN
NDB Y RWY 29**

RADAR **119.400**
START **120.300**



MISSED APPROACH
Climb on track 291° to 2000', then turn LEFT to NDB/MKR BL climbing to 3100' or above, then then proceed to holding area, or according to chart, or as instructed by ATC unit.



OCA(H)		A	B	C	D
Straight-in	Approach	910' (500')	910' (500')	910' (500')	910' (500')
	Circling	910' (500')	910' (500')	1010' (600')	1100' (690')

① TRANSITION LEVEL:
- FL050 when QNH is 1013 hPa (760mm mercury column) or above;
- FL060 when QNH is 977 hPa (733mm mercury column) or above, but less than 1013 hPa (760mm mercury column);
- FL070 when QNH is less than 977 hPa (733mm mercury column).