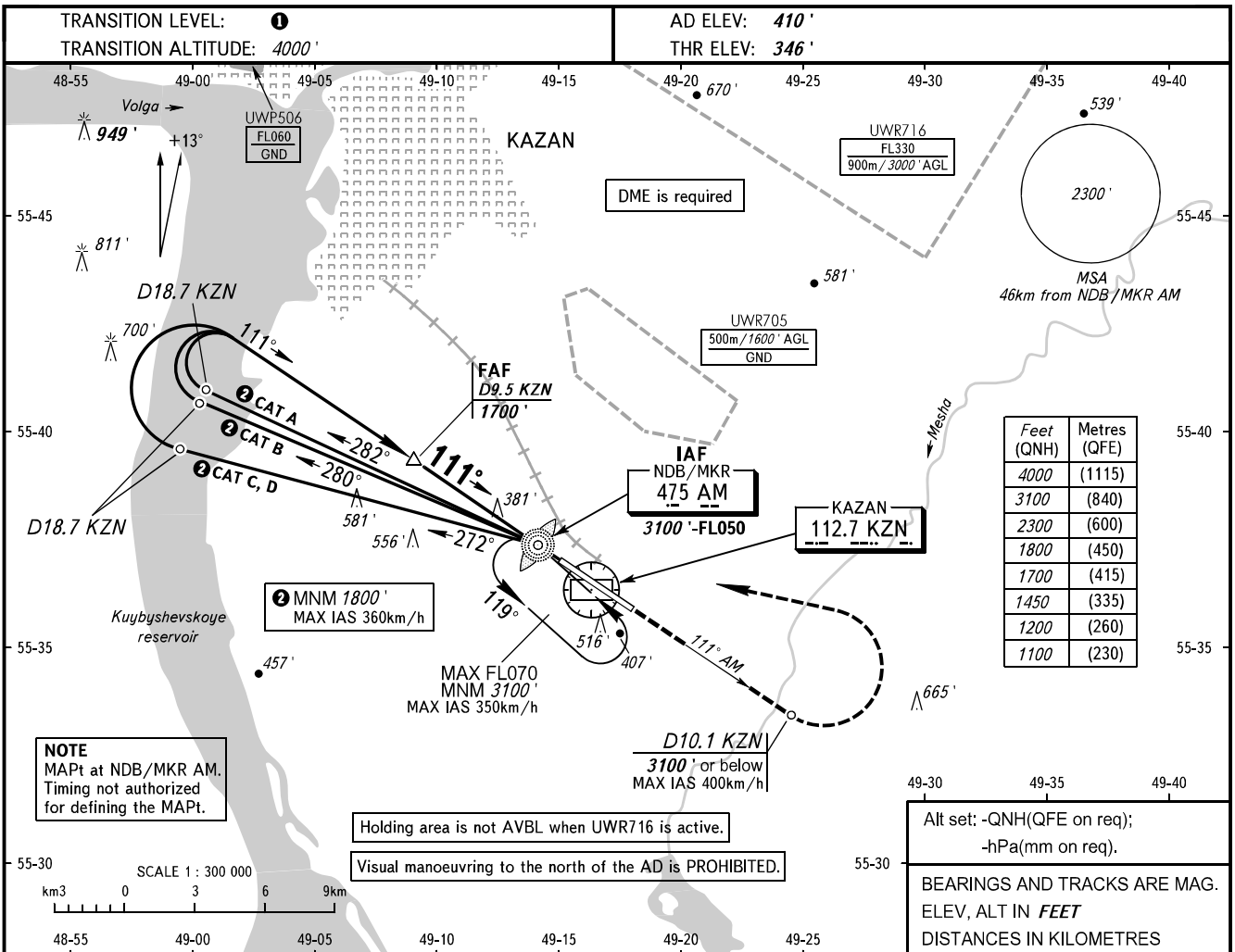


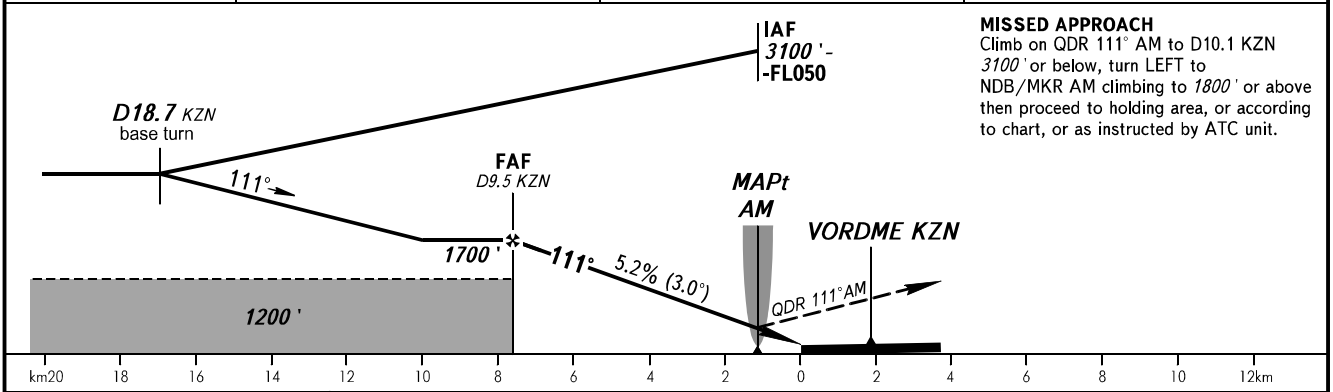
**INSTRUMENT  
APPROACH  
CHART - ICAO**

|       |         |
|-------|---------|
| RADAR | 119.400 |
| START | 120.300 |

**KAZAN, RUSSIA**  
KAZAN  
NDB Z RWY 11



|          |       |       |       |
|----------|-------|-------|-------|
| DME KZN  | 9.5   | 8.0   | 6.0   |
| ALTITUDE | 1700' | 1450' | 1100' |



| OCA(H)               |          | A           | B           | C            | D            | <b>① TRANSITION LEVEL:</b><br>- FL050 when QNH is 1013 hPa (760mm mercury column) or above;<br>- FL060 when QNH is 977 hPa (733mm mercury column) or above, but less than 1013 hPa (760mm mercury column);<br>- FL070 when QNH is less than 977 hPa (733mm mercury column). |     |     |      |      |      |      |  |  |  |
|----------------------|----------|-------------|-------------|--------------|--------------|---|-----|-----|------|------|------|------|--|--|--|
| Straight-in Approach | Circling | 630' (290') | 630' (290') | 630' (290')  | 630' (290')  |   |     |     |      |      |      |      |  |  |  |
|                      |          | 820' (410') | 910' (500') | 1010' (600') | 1100' (690') |   |     |     |      |      |      |      |  |  |  |
| GROUND SPEED         | km/h     | 150         | 180         | 210          | 240          | 270   | 300 | 330 | 360  | 390  | 420  | 450  |  |  |  |
| RATE OF DESCENT      | m/s      | 2.2         | 2.6         | 3.0          | 3.5          | 3.9   | 4.3 | 4.8 | 5.2  | 5.6  | 6.1  | 6.5  |  |  |  |
|                      | ft/min   | 430         | 516         | 602          | 688          | 774   | 860 | 946 | 1032 | 1118 | 1204 | 1290 |  |  |  |

CHANGE: New chart