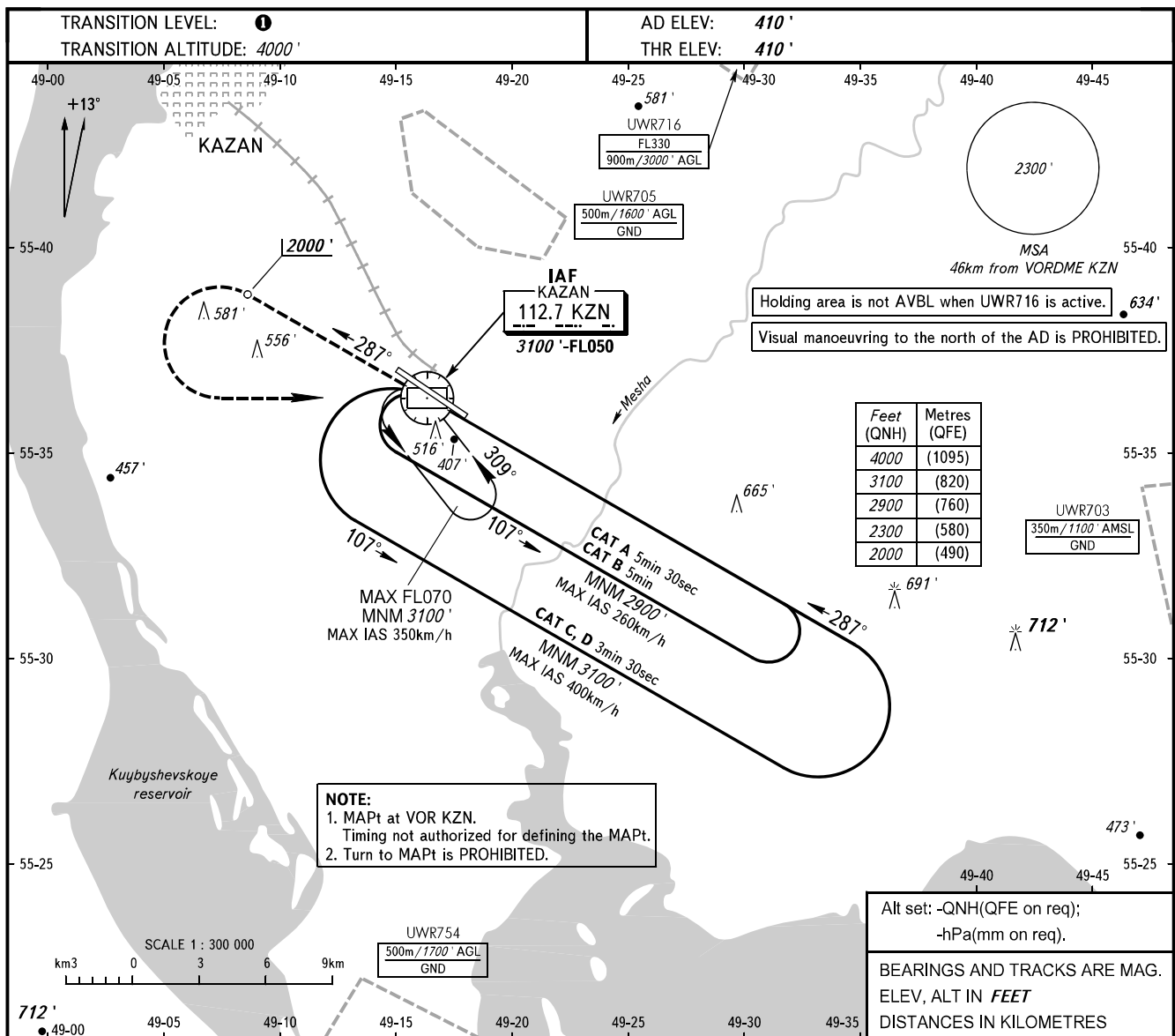


**INSTRUMENT
APPROACH
CHART - ICAO**

**KAZAN, RUSSIA
KAZAN
VOR X RWY 29**

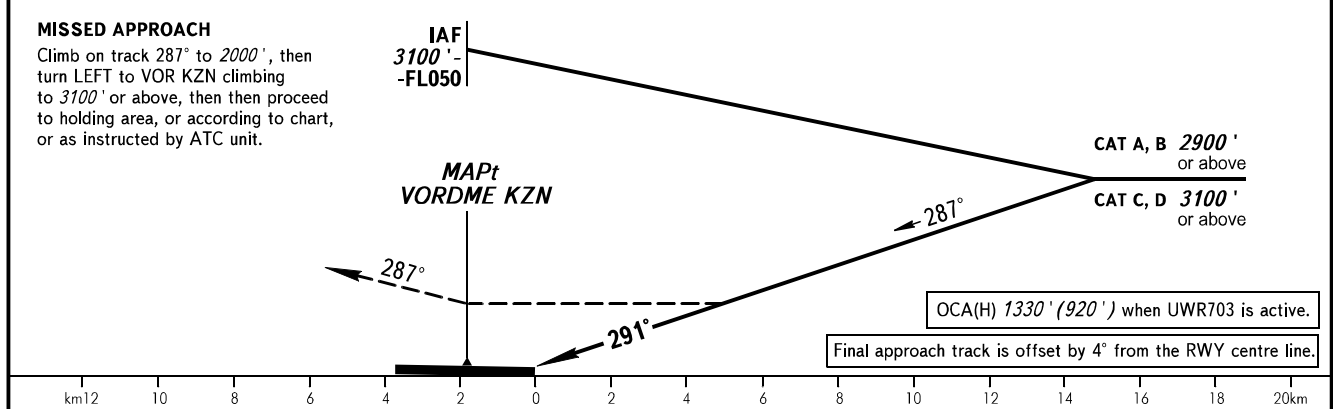
RADAR	119.400
START	120.300



NOTE:
1. MAPt at VOR KZN.
Timing not authorized for defining the MAPt.
2. Turn to MAPt is PROHIBITED.

Feet (QNH)	Metres (QFE)
4000	(1095)
3100	(820)
2900	(760)
2300	(580)
2000	(490)

All set: -QNH(QFE on req);
-hPa(mm on req).
BEARINGS AND TRACKS ARE MAG.
ELEV, ALT IN FEET
DISTANCES IN KILOMETRES



OCA(H)		A	B	C	D
Straight-in	Approach	990' (580')	990' (580')	990' (580')	990' (580')
	Circling	990' (580')	990' (580')	1010' (600')	1100' (690')

1 TRANSITION LEVEL:
- FL050 when QNH is 1013 hPa (760mm mercury column) or above;
- FL060 when QNH is 977 hPa (733mm mercury column) or above, but less than 1013 hPa (760mm mercury column);
- FL070 when QNH is less than 977 hPa (733mm mercury column).