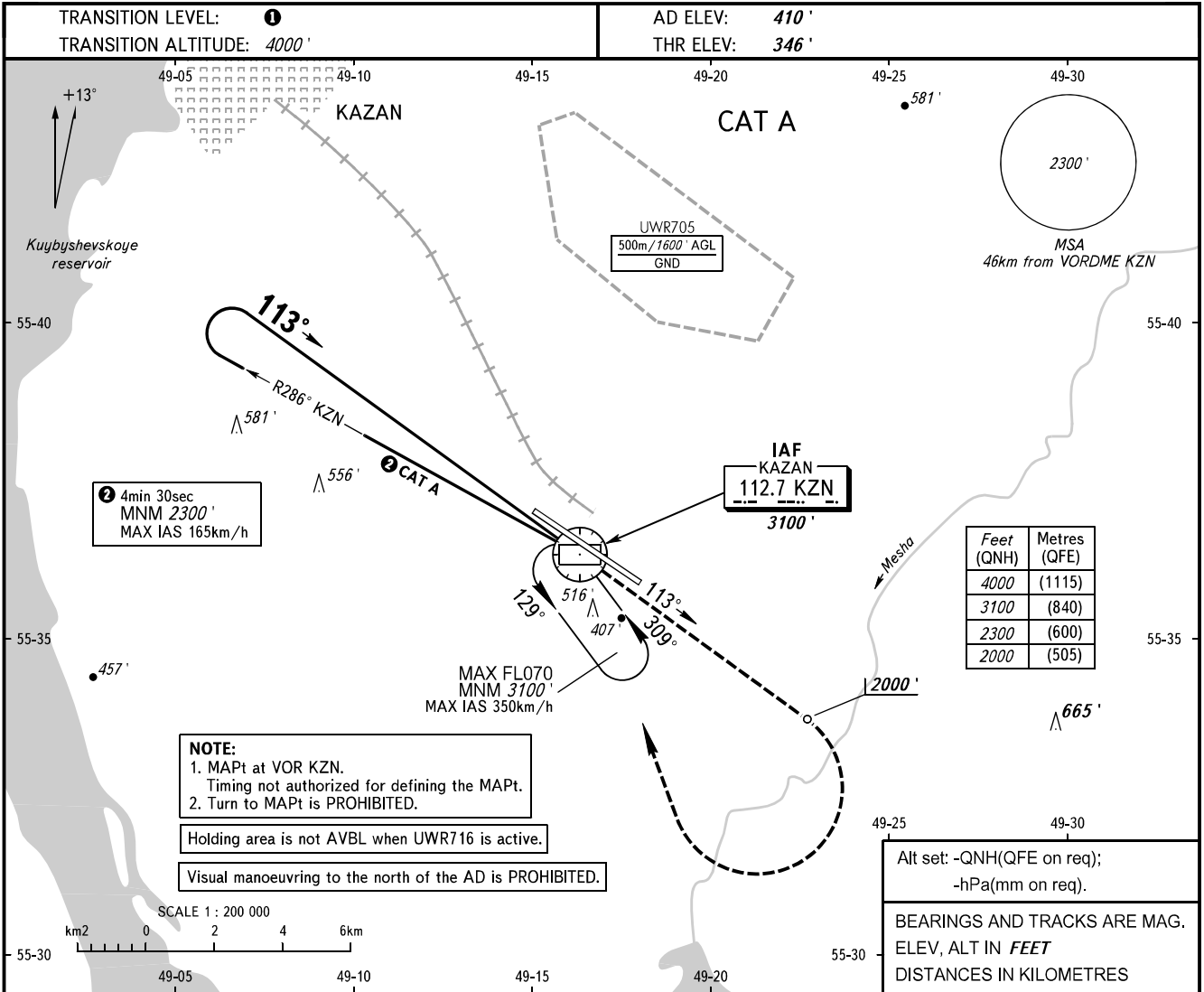


**INSTRUMENT  
APPROACH  
CHART - ICAO**

RADAR	119.400
START	120.300

**KAZAN, RUSSIA**  
KAZAN  
VOR X RWY 11



**NOTE:**  
1. MAPt at VOR KZN.  
Timing not authorized for defining the MAPt.  
2. Turn to MAPt is PROHIBITED.

Holding area is not AVBL when UWR716 is active.

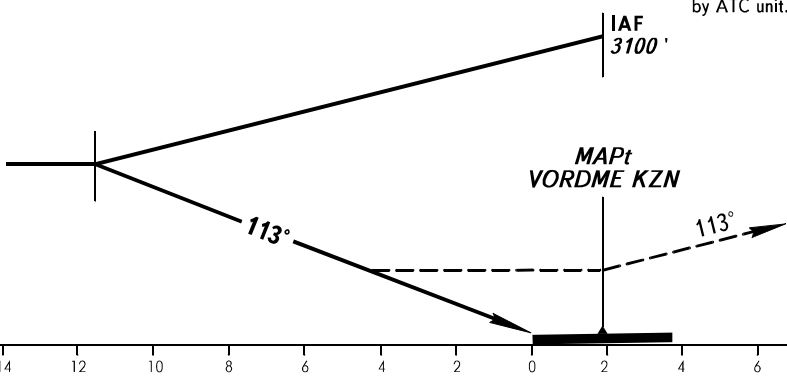
Visual manoeuvring to the north of the AD is PROHIBITED.

Feet (QNH)	Metres (QFE)
4000	(1115)
3100	(840)
2300	(600)
2000	(505)

Alt set: -QNH(QFE on req);  
-hPa(mm on req).

BEARINGS AND TRACKS ARE MAG.  
ELEV, ALT IN FEET  
DISTANCES IN KILOMETRES

**MISSED APPROACH**  
Climb on track 113° to 2000', turn RIGHT to VOR KZN climbing to 3100' or above, then proceed to holding area, or as instructed by ATC unit.



OCA(H)		A	B	C	D
Straight-in Approach		1110' (760')			
Circling		1110' (760')			

**1** TRANSITION LEVEL:  
- FL050 when QNH is 1013 hPa (760mm mercury column) or above;  
- FL060 when QNH is 977 hPa (733mm mercury column) or above, but less than 1013 hPa (760mm mercury column);  
- FL070 when QNH is less than 977 hPa (733mm mercury column).

CHANGE: New chart