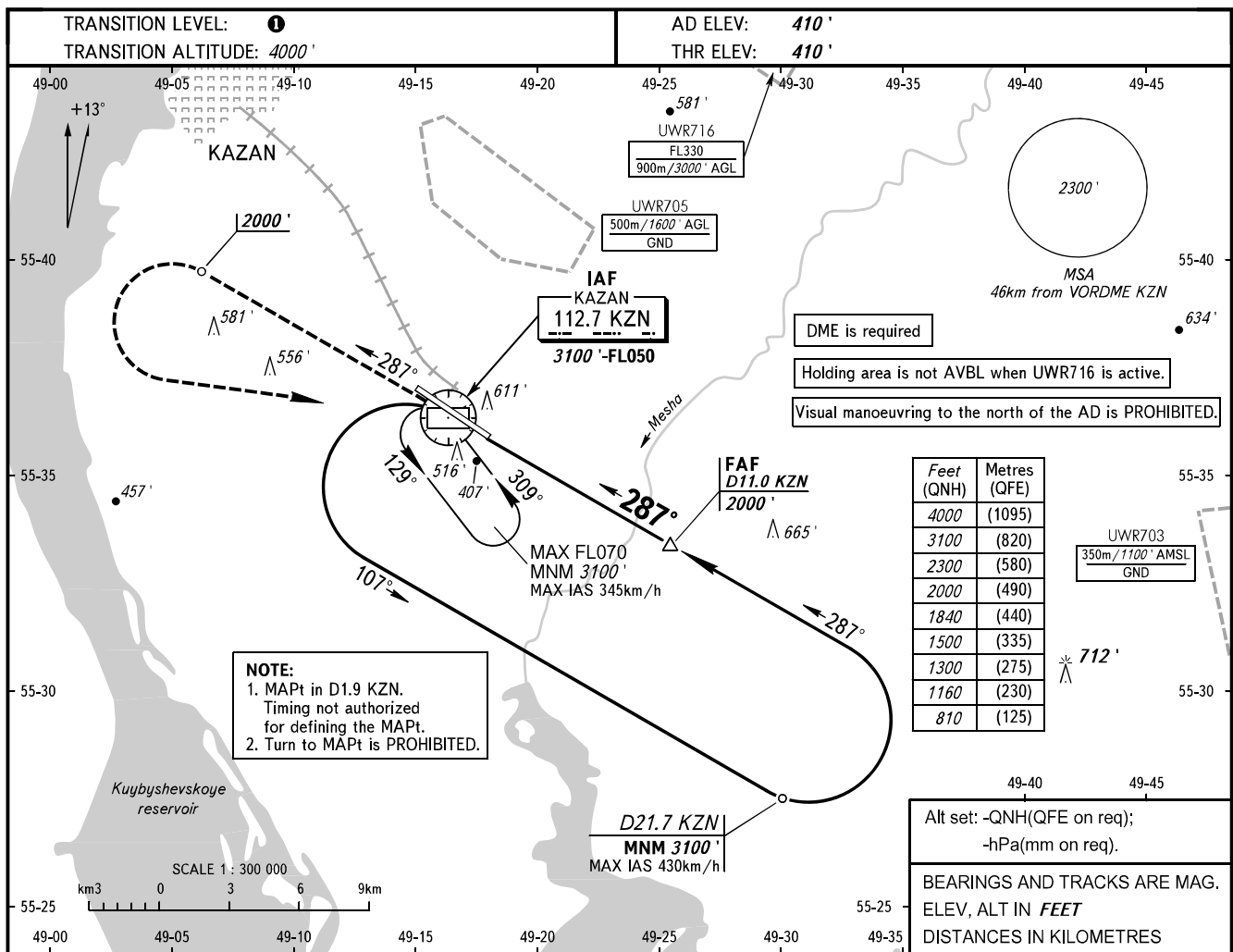


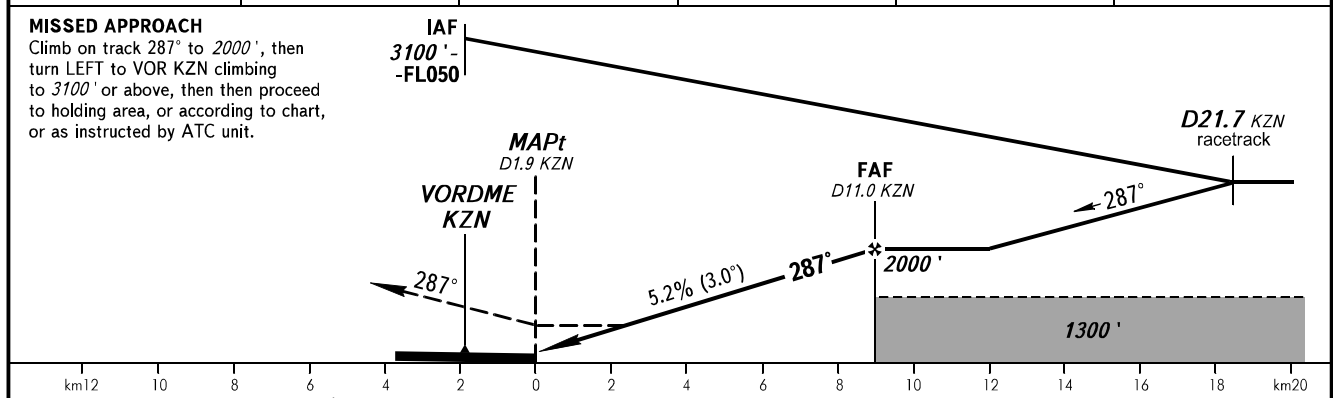
**INSTRUMENT  
APPROACH  
CHART - ICAO**

**KAZAN, RUSSIA  
KAZAN  
VOR Y RWY 29**

RADAR **119.400**  
START **120.300**



DME KZN	4.0	6.0	8.0	10.0	11.0
ALTITUDE	810'	1160'	1500'	1840'	2000'



OCA(H)	A	B	C	D	① <b>TRANSITION LEVEL:</b> - FL050 when QNH is 1013 hPa (760mm mercury column) or above; - FL060 when QNH is 977 hPa (733mm mercury column) or above, but less than 1013 hPa (760mm mercury column); - FL070 when QNH is less than 977 hPa (733mm mercury column).							
Straight-in	850' (440')	850' (440')	850' (440')	850' (440')								
Approach												
Circling	850' (440')	910' (500')	1010' (600')	1100' (690')								
GROUND SPEED	km/h	150	180	210	240	270	300	330	360	390	420	450
RATE OF DESCENT	m/s	2.2	2.6	3.0	3.5	3.9	4.3	4.8	5.2	5.6	6.1	6.5
	ft/min	430	516	602	688	774	860	946	1032	1118	1204	1290