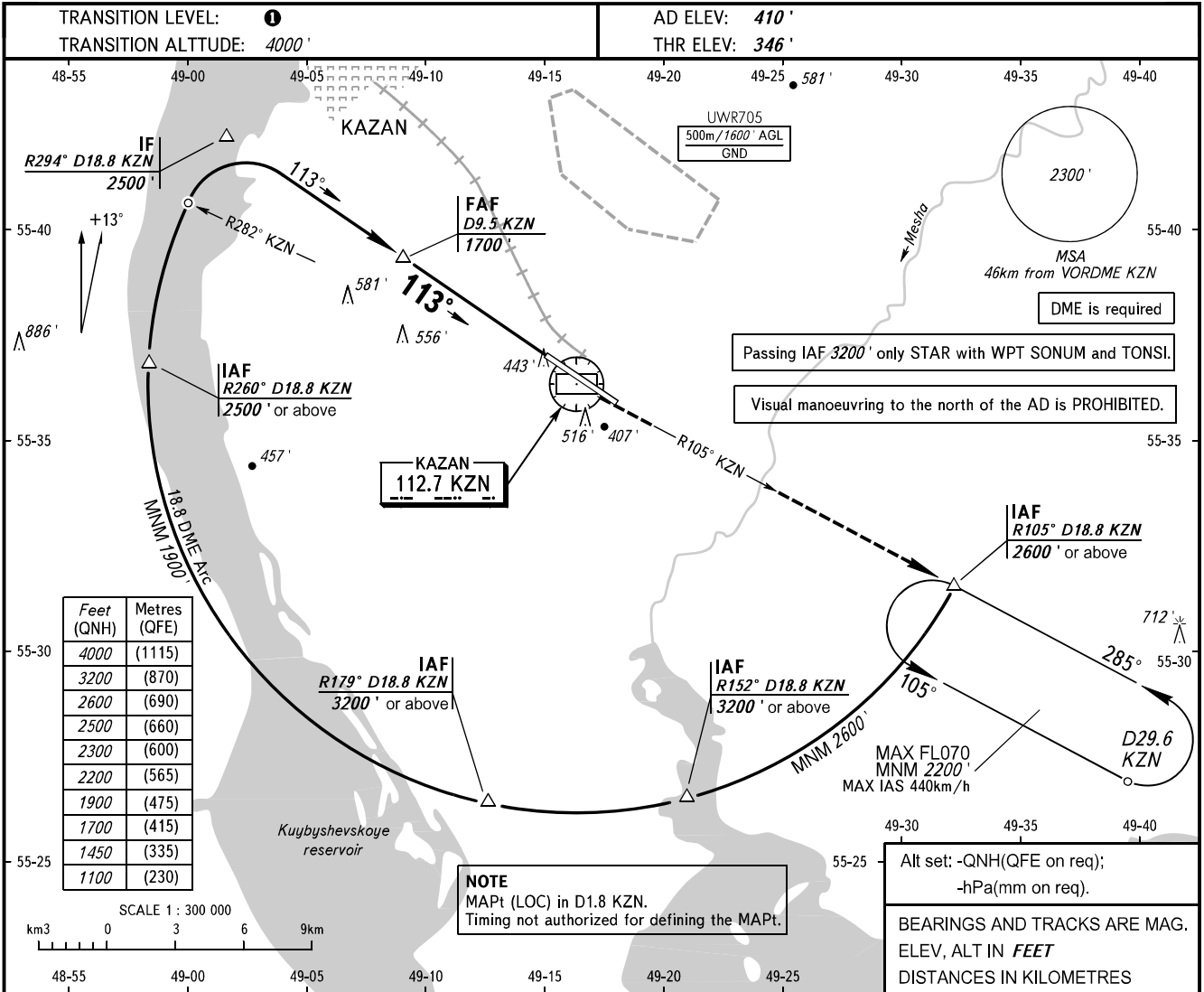


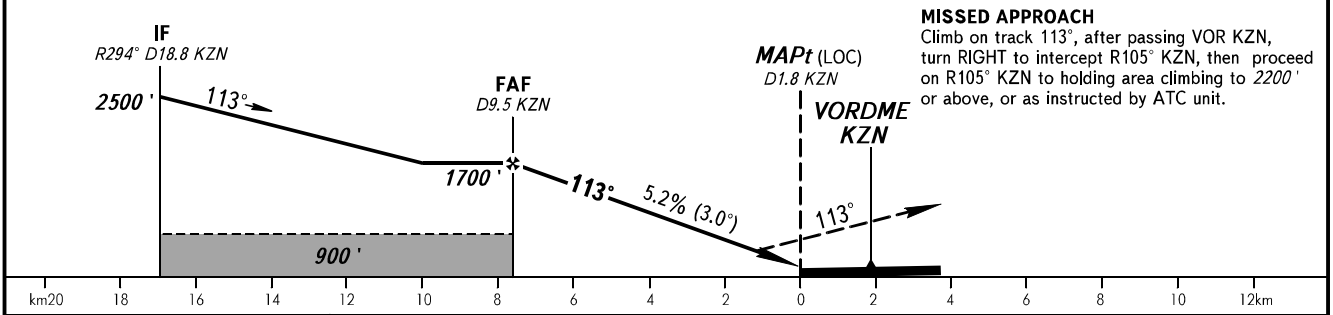
**INSTRUMENT
APPROACH
CHART - ICAO**

KAZAN, RUSSIA
KAZAN
VOR Z RWY 11

RADAR	119.400
START	120.300



DME KZN	9.5	8.0	6.0
ALTITUDE	1700'	1450'	1100'



MISSED APPROACH
Climb on track 113°, after passing VOR KZN, turn RIGHT to intercept R105° KZN, then proceed on R105° KZN to holding area climbing to 2200' or above, or as instructed by ATC unit.

OCA(H)		A	B	C	D	① TRANSITION LEVEL: - FL050 when QNH is 1013 hPa (760mm mercury column) or above; - FL060 when QNH is 977 hPa (733mm mercury column) or above, but less than 1013 hPa (760mm mercury column); - FL070 when QNH is less than 977 hPa (733mm mercury column).									
Straight-in Approach	Circling	690' (350')	690' (350')	690' (350')	690' (350')										
GROUND SPEED	km/h	150	180	210	240	270	300	330	360	390	420	450			
RATE OF DESCENT	m/s	2.2	2.6	3.0	3.5	3.9	4.3	4.8	5.2	5.6	6.1	6.5			
	ft/min	430	516	602	688	774	860	946	1032	1118	1204	1290			

CHANGE: New chart