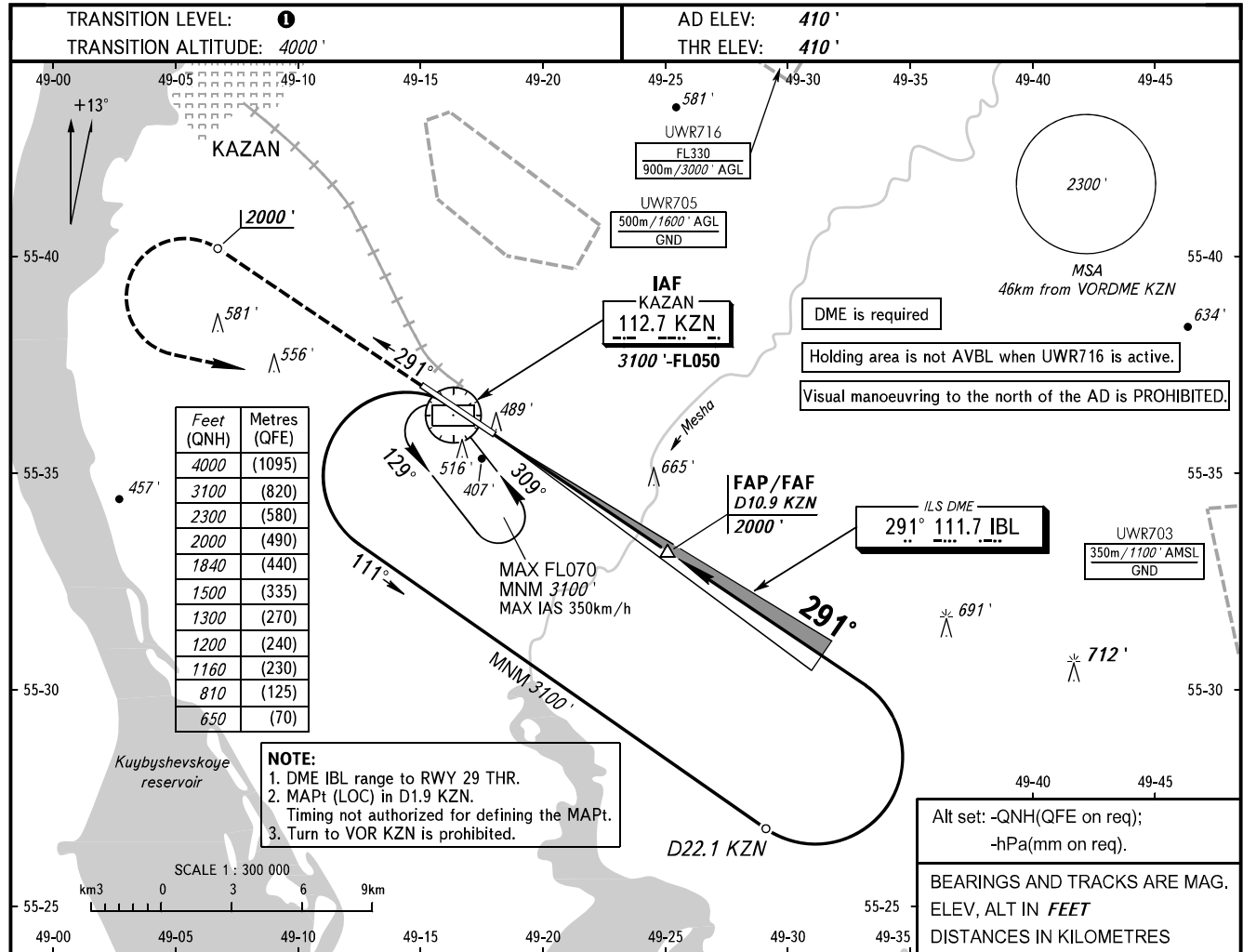


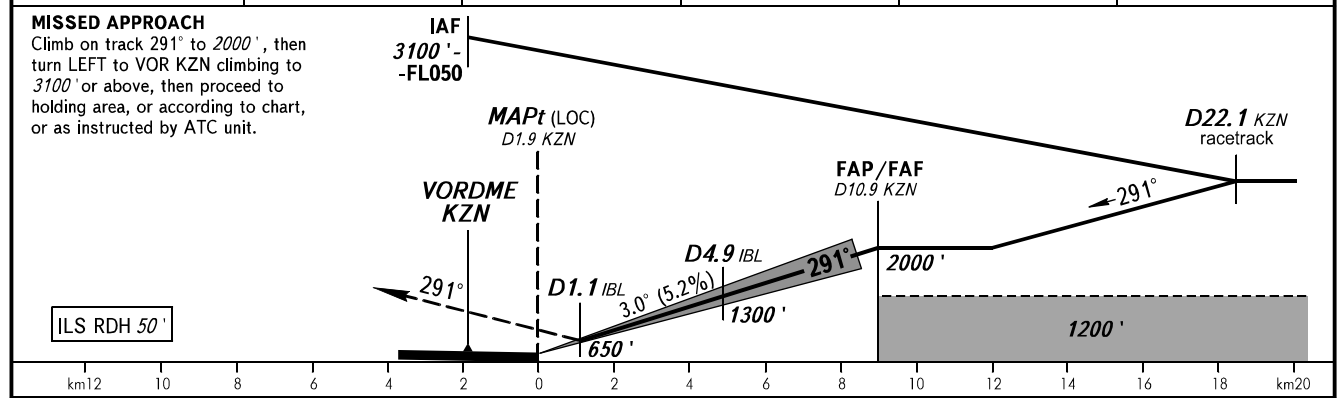
**INSTRUMENT
APPROACH
CHART - ICAO**

**KAZAN, RUSSIA
KAZAN
ILS Y CAT I, LOC Y RWY 29**

RADAR 119.400
START 120.300



DME KZN	4.0	6.0	8.0	10.0	10.9
ALTITUDE	810'	1160'	1500'	1840'	2000'



OCA(H)		A	B	C	D	TRANSITION LEVEL:										
Straight-in	CAT I	620' (210')	630' (220')	640' (230')	650' (240')	- FL050 when QNH is 1013 hPa (760mm mercury column) or above;										
	LOC	740' (330')	740' (330')	740' (330')	740' (330')	- FL060 when QNH is 977 hPa (733mm mercury column) or above, but less than 1013 hPa (760mm mercury column);										
Approach						- FL070 when QNH is less than 977 hPa (733mm mercury column).										
Circling		820' (410')	910' (500')	1010' (600')	1100' (690')											
GROUND SPEED		km/h	150	180	210	240	270	300	330	360	390	420	450			
RATE OF DESCENT		m/s	2.2	2.6	3.0	3.5	3.9	4.3	4.8	5.2	5.6	6.1	6.5			
		ft/min	430	516	602	688	774	860	946	1032	1118	1204	1290			