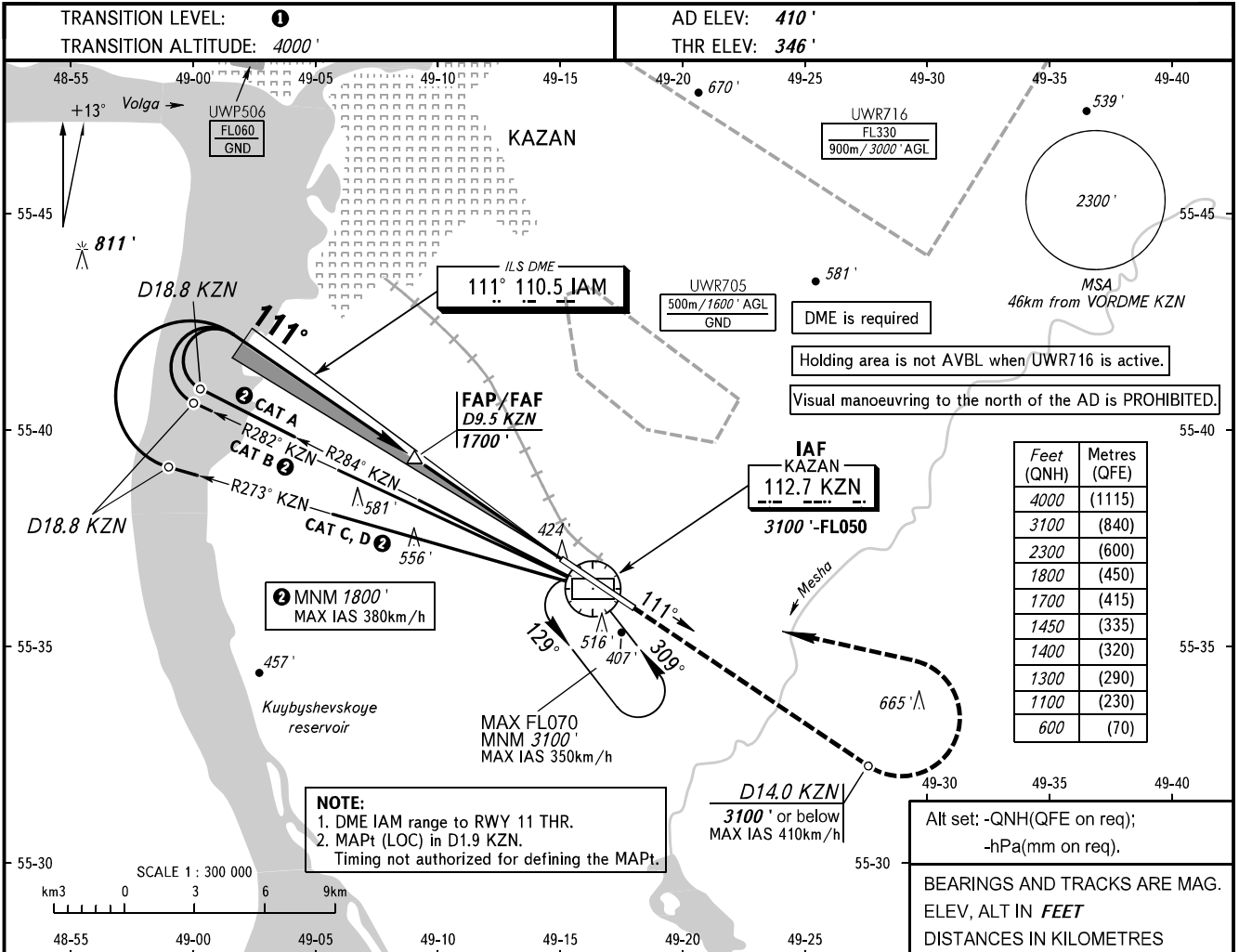


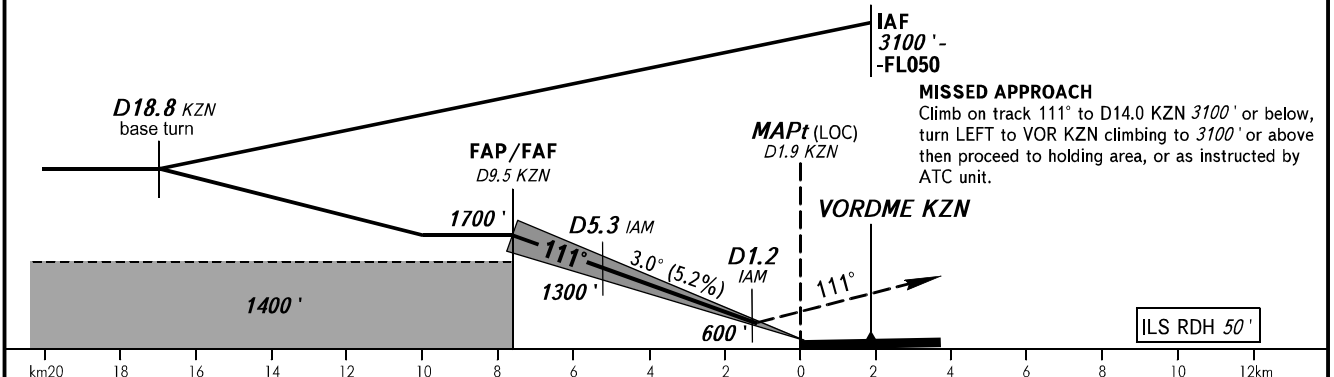
**INSTRUMENT  
APPROACH  
CHART - ICAO**

RADAR **119.400**  
START **120.300**

**KAZAN, RUSSIA**  
KAZAN  
ILS Y CAT I/II, LOC Y RWY 11



DME KZN	9.5	8.0	6.0
ALTITUDE	1700'	1450'	1100'



OCA(H)		A	B	C	D	<b>①</b> TRANSITION LEVEL: - FL050 when QNH is 1013 hPa (760mm mercury column) or above; - FL060 when QNH is 977 hPa (733mm mercury column) or above, but less than 1013 hPa (760mm mercury column); - FL070 when QNH is less than 977 hPa (733mm mercury column).							
Straight-in Approach	CAT I	555' (208')	565' (218')	575' (228')	584' (238')								
	CAT II	466' (120')	483' (136')	496' (149')	509' (162')								
	LOC	670' (330')	670' (330')	670' (330')	670' (330')								
Circling		820' (410')	910' (500')	1010' (600')	1100' (690')								
GROUND SPEED		km/h	150	180	210	240	270	300	330	360	390	420	450
RATE OF DESCENT		m/s	2.2	2.6	3.0	3.5	3.9	4.3	4.8	5.2	5.6	6.1	6.5
		ft/min	430	516	602	688	774	860	946	1032	1118	1204	1290

CHANGE: New chart