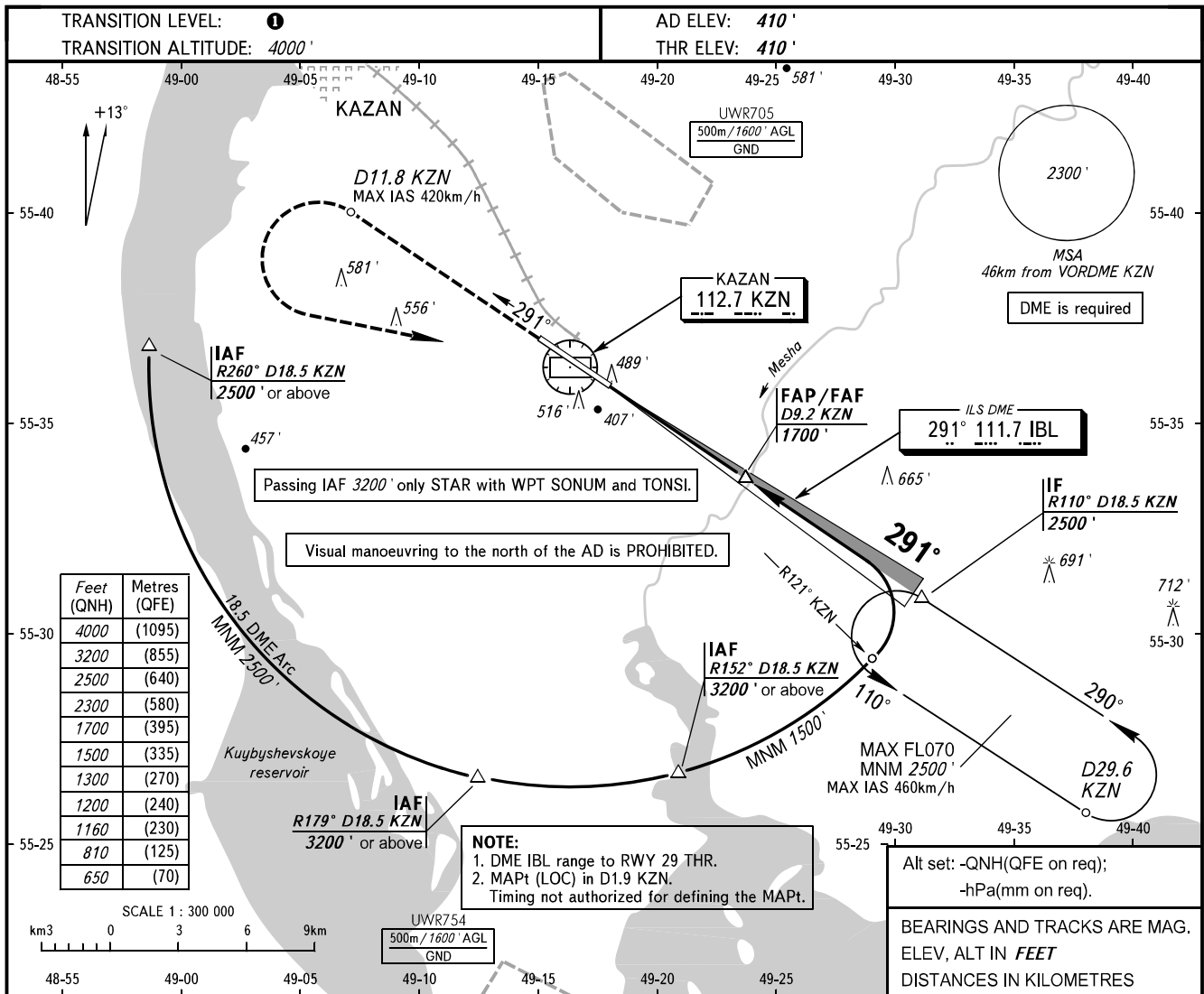


**INSTRUMENT
APPROACH
CHART - ICAO**

RADAR 119.400
START 120.300

KAZAN, RUSSIA
KAZAN
ILS Z CAT I, LOC Z RWY 29



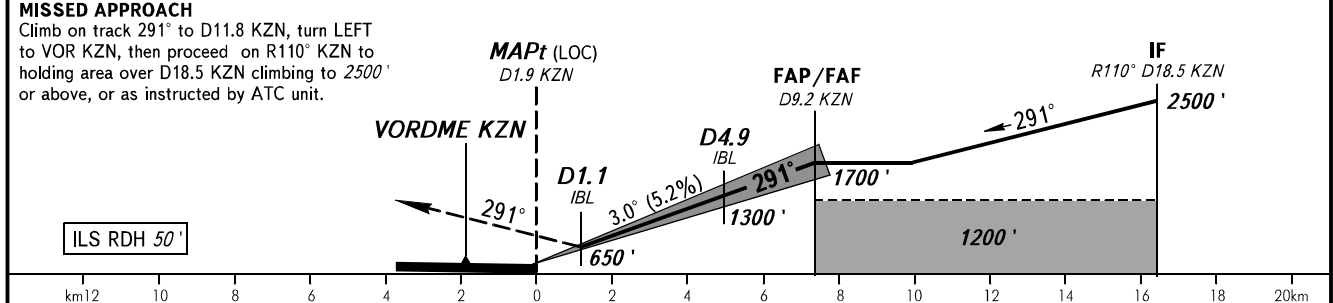
Feet (QNH)	Metres (QFE)
4000	(1095)
3200	(855)
2500	(640)
2300	(580)
1700	(395)
1500	(335)
1300	(270)
1200	(240)
1160	(230)
810	(125)
650	(70)

SCALE 1 : 300 000
0 3 6 9km

NOTE:
1. DME IBL range to RWY 29 THR.
2. MAPt (LOC) in D1.9 KZN.
Timing not authorized for defining the MAPt.

Alt set: -QNH(QFE on req);
-hPa(mm on req).
BEARINGS AND TRACKS ARE MAG.
ELEV, ALT IN FEET
DISTANCES IN KILOMETRES

DME KZN	4.0	6.0	8.0	9.2
ALTITUDE	810'	1160'	1500'	1700'



OCA(H)		A	B	C	D
Straight-in Approach	CAT I	620' (210')	630' (220')	640' (230')	650' (240')
	LOC	740' (330')	740' (330')	740' (330')	740' (330')
Circling		820' (410')	910' (500')	1010' (600')	1100' (690')

1 TRANSITION LEVEL:
- FL050 when QNH is 1013 hPa (760mm mercury column) or above;
- FL060 when QNH is 977 hPa (733mm mercury column) or above, but less than 1013 hPa (760mm mercury column);
- FL070 when QNH is less than 977 hPa (733mm mercury column).

GROUND SPEED	km/h	150	180	210	240	270	300	330	360	390	420	450
	m/s	2.2	2.6	3.0	3.5	3.9	4.3	4.8	5.2	5.6	6.1	6.5
RATE OF DESCENT	ft/min	430	516	602	688	774	860	946	1032	1118	1204	1290