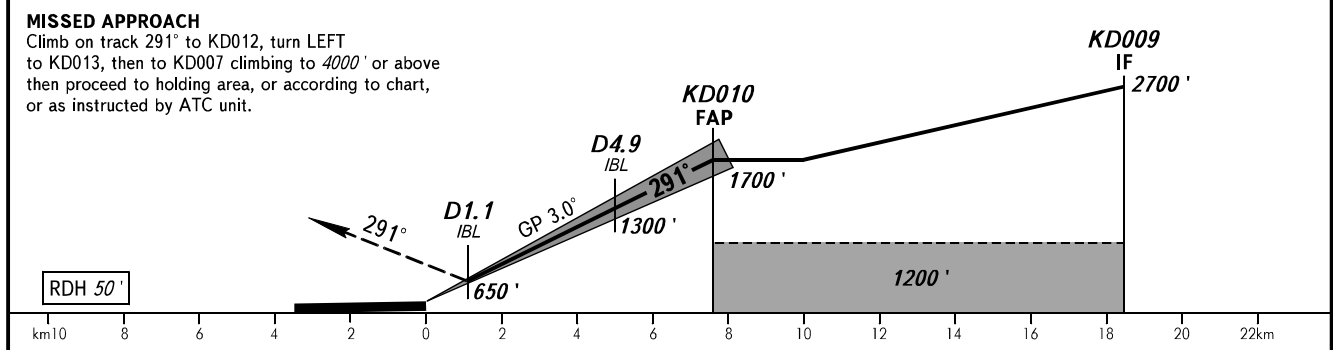
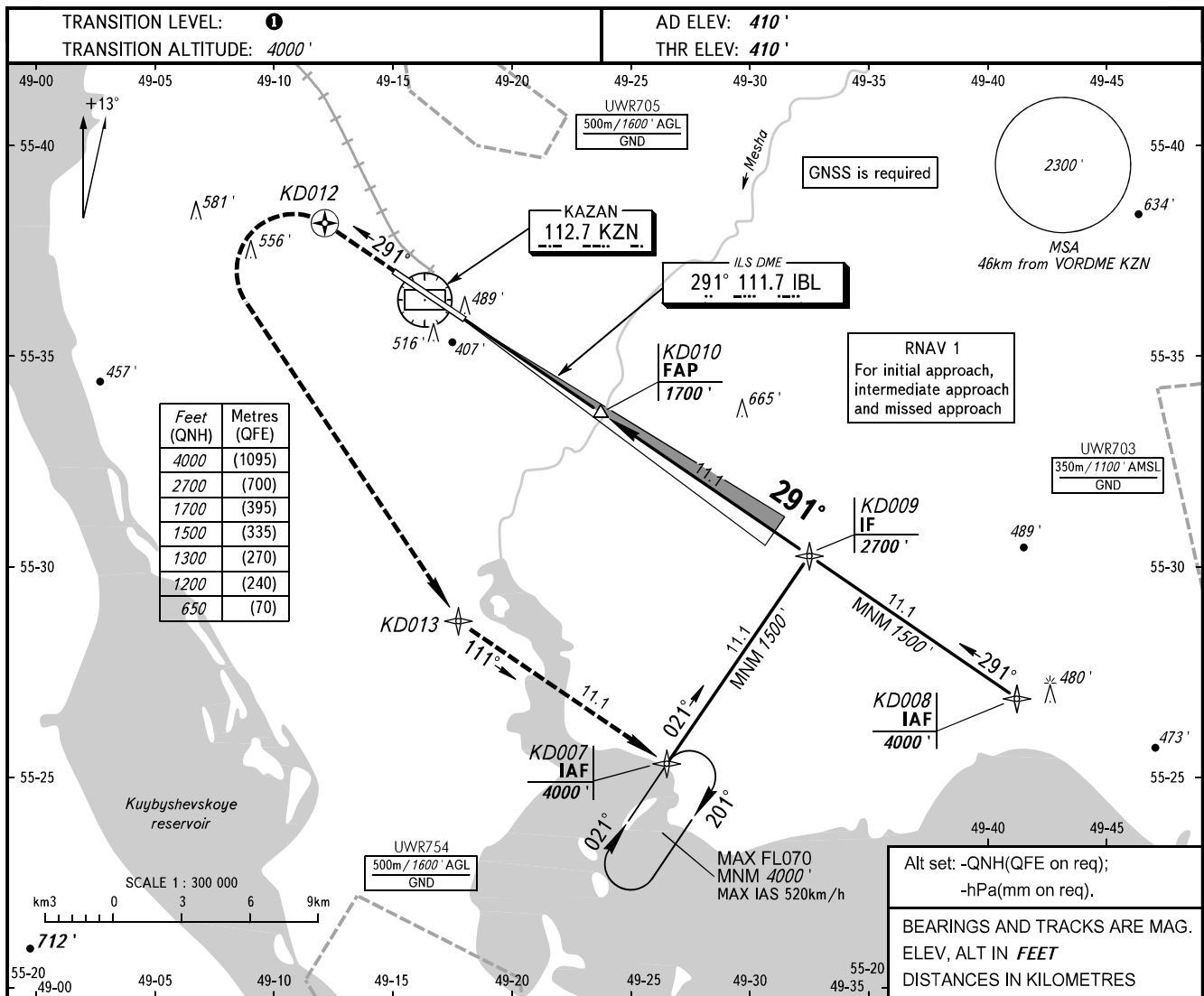


**INSTRUMENT
APPROACH
CHART - ICAO**

RADAR 119.400
START 120.300

KAZAN, RUSSIA
KAZAN
ILS X RWY 29 CAT I



OCA(H)		A	B	C	D								
Straight-in Approach	CAT I	620' (210')	630' (220')	640' (230')	650' (240')								
Circling		820' (410')	910' (500')	1010' (595')	1100' (690')								
GROUND SPEED		km/h	150	180	210	240	270	300	330	360	390	420	450
RATE OF DESCENT		m/s	2.2	2.6	3.0	3.5	3.9	4.3	4.8	5.2	5.6	6.1	6.5
		ft/min	430	516	602	688	774	860	946	1032	1118	1204	1290

TRANSITION LEVEL:
 - FL050 when QNH is 1013 hPa (760mm mercury column) or above;
 - FL060 when QNH is 977 hPa (733mm mercury column) or above, but less than 1013 hPa (760mm mercury column);
 - FL070 when QNH is less than 977 hPa (733mm mercury column).
NOTE:
 1. DME IBL range to RWY 29 THR.
 2. Visual manoeuvring to the north of the AD is PROHIBITED.