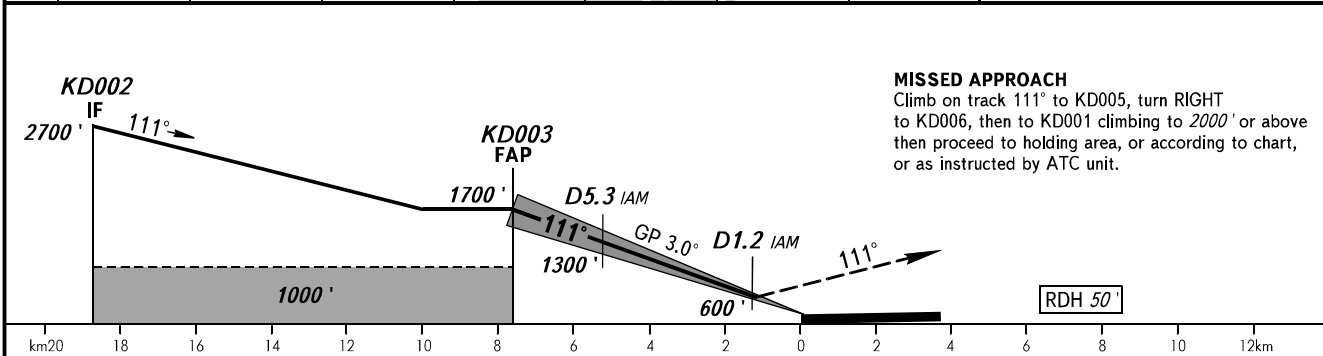
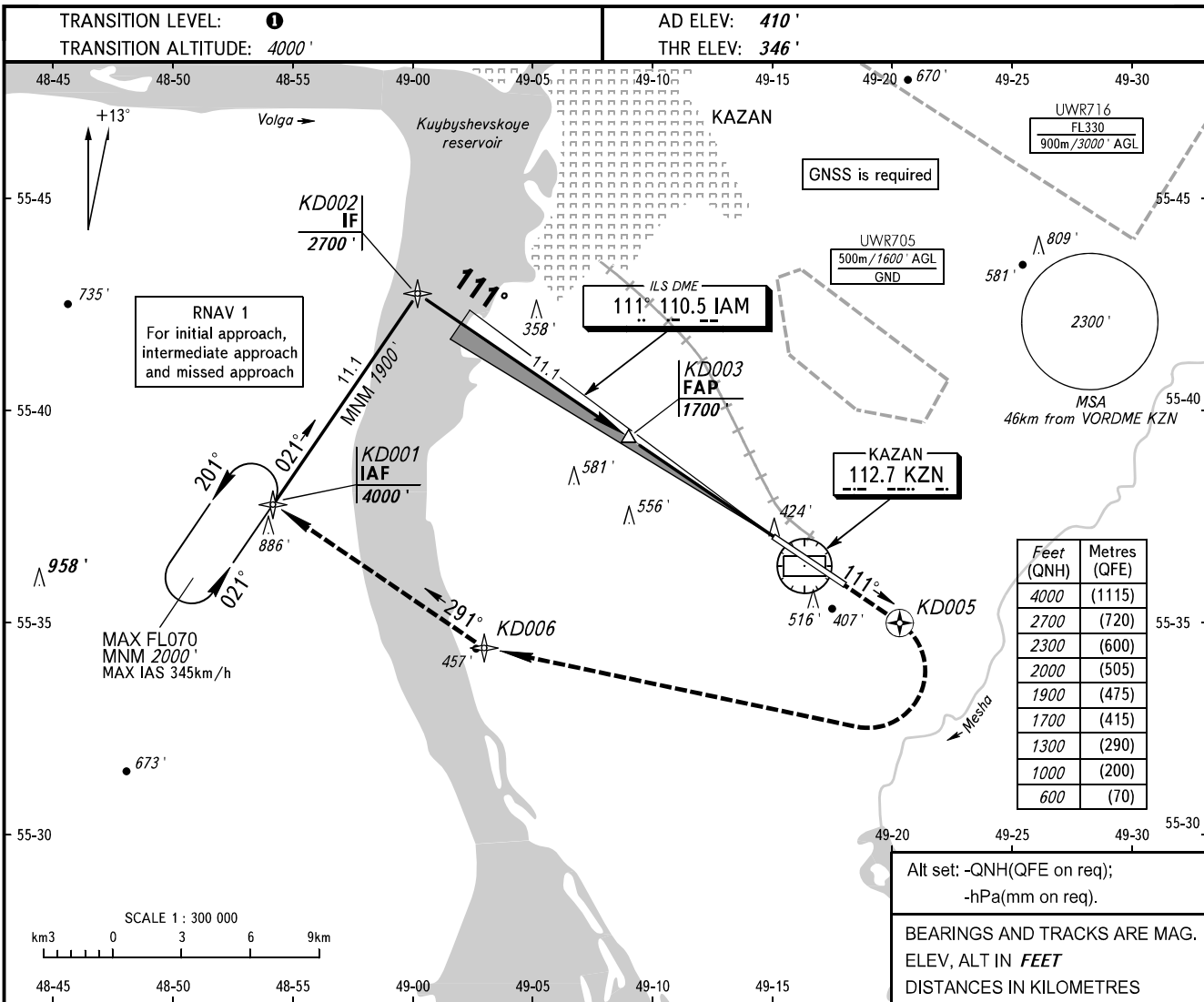


**INSTRUMENT
APPROACH
CHART - ICAO**

RADAR **119.400**
START **120.300**

KAZAN, RUSSIA
KAZAN
ILS X RWY 11 CAT I/II



OCA(H)		A	B	C	D							
Straight-in Approach	CAT I	555' (208')	565' (218')	575' (228')	584' (238')							
	CAT II	466' (120')	483' (136')	496' (149')	509' (162')							
Circling		820' (410')	910' (500')	1010' (595')	1100' (690')							
GROUND SPEED	km/h	150	180	210	240	270	300	330	360	390	420	450
RATE OF DESCENT	m/s	2.2	2.6	3.0	3.5	3.9	4.3	4.8	5.2	5.6	6.1	6.5
	ft/min	430	516	602	688	774	860	946	1032	1118	1204	1290

- 1** TRANSITION LEVEL:
- FL050 when QNH is 1013 hPa (760mm mercury column) or above;
- FL060 when QNH is 977 hPa (733mm mercury column) or above, but less than 1013 hPa (760mm mercury column);
- FL070 when QNH is less than 977 hPa (733mm mercury column).
- NOTE:**
1. DME IAM range to RWY 11 THR.
2. Visual manoeuvring to the north of the AD is PROHIBITED.

CHANGE: New chart