

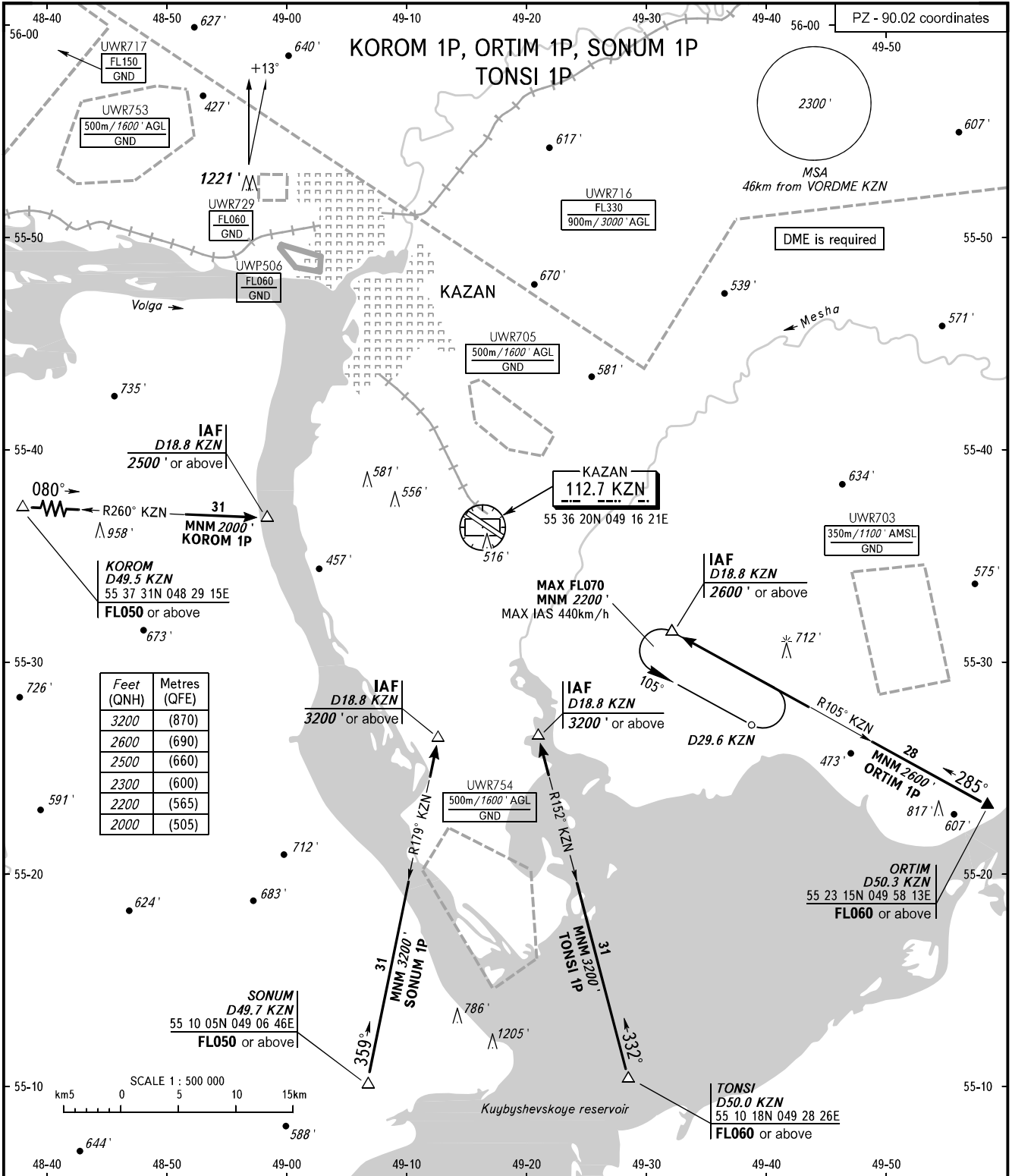
STANDARD ARRIVAL CHART
INSTRUMENT (STAR) - ICAO

KAZAN, RUSSIA

KAZAN

RWY 11

TRANSITION
LEVEL: 1



APPROACH Sector WEST **135.225**
Sector EAST **128.625**
RADAR **119.400**
START **120.300**

- 1 TRANSITION LEVEL:
- FL050 when QNH is 1013 hPa (760mm mercury column) or above;
 - FL060 when QNH is 977 hPa (733mm mercury column) or above, but less than 1013 hPa (760mm mercury column);
 - FL070 when QNH is less than 977 hPa (733mm mercury column).

BEARINGS AND TRACKS ARE MAGNETIC
ALTITUDES AND ELEVATIONS IN FEET
DISTANCES IN KILOMETRES