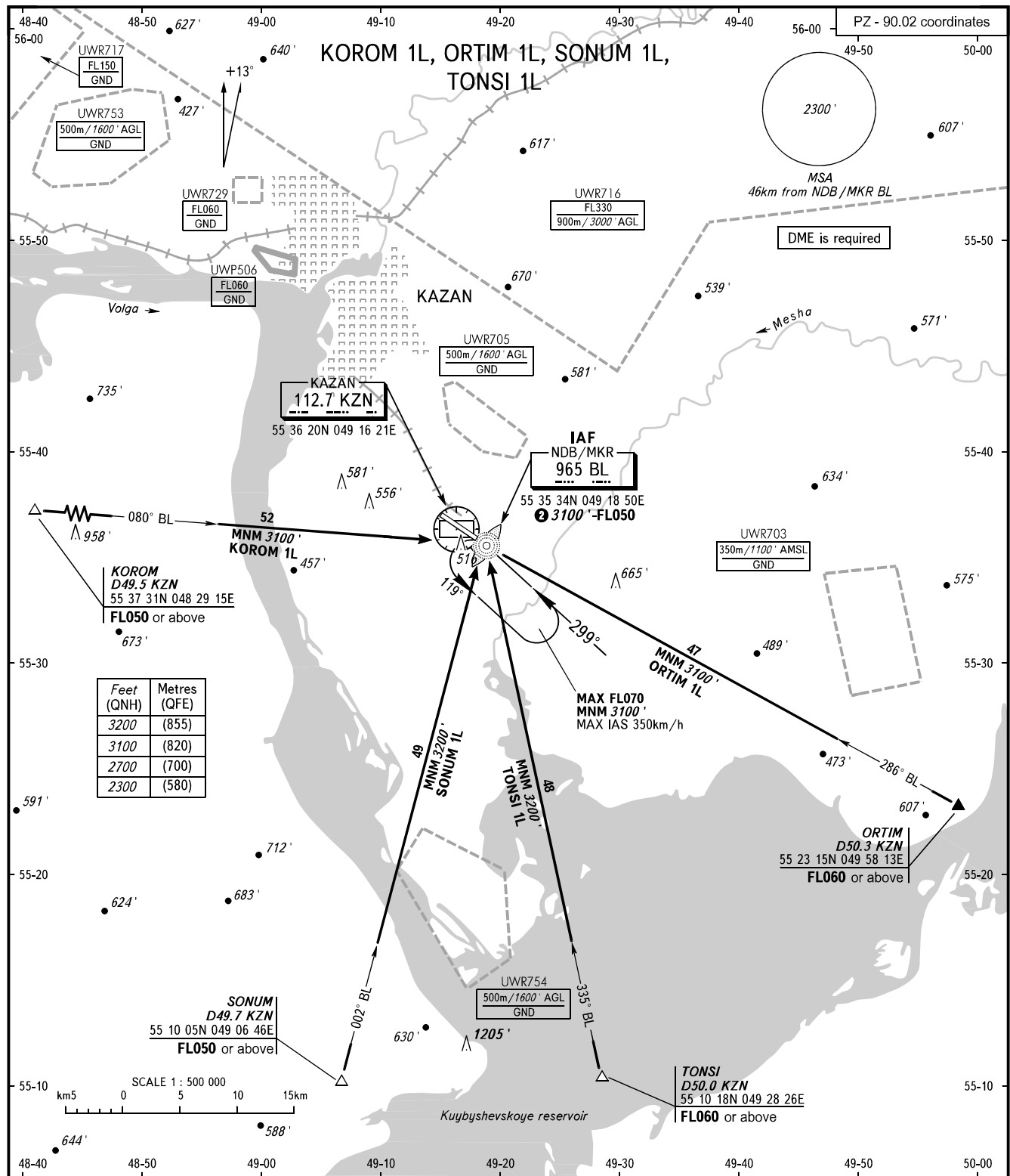


STANDARD ARRIVAL CHART
INSTRUMENT (STAR) - ICAO

KAZAN, RUSSIA
KAZAN
RWY 29

TRANSITION
LEVEL: ①



APPROACH Sector WEST **135.225**
Sector EAST **128.625**
RADAR **119.400**
START **120.300**

- ① TRANSITION LEVEL:
- FL050 when QNH is 1013 hPa (760mm mercury column) or above;
- FL060 when QNH is 977 hPa (733mm mercury column) or above, but less than 1013 hPa (760mm mercury column);
- FL070 when QNH is less than 977 hPa (733mm mercury column).
- ② For STAR SONUM 1L and TONSI 1L - cross IAF at **3200** -FL050.

NOTE
Holding area is not AVBL when UWR716 is active.

BEARINGS AND TRACKS ARE MAGNETIC
ALTITUDES AND ELEVATIONS IN FEET
DISTANCES IN KILOMETRES

CHANGE: New chart