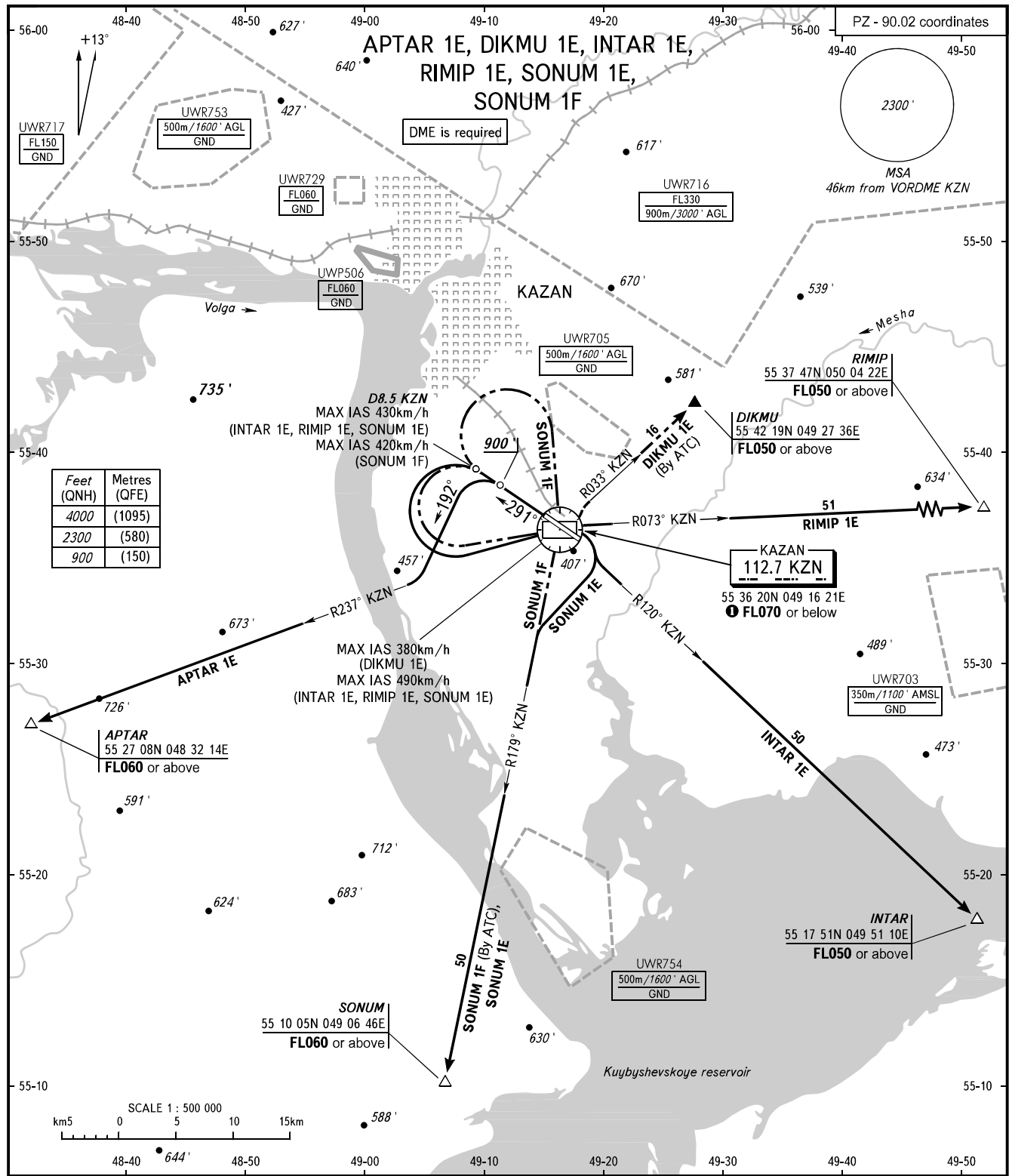


STANDARD DEPARTURE CHART  
INSTRUMENT (SID) - ICAO

TRANSITION  
ALTITUDE: 4000'

KAZAN, RUSSIA  
KAZAN  
RWY 29



START **120.300**  
RADAR **119.400**

**NOTE**  
SID DIKMU 1E and SID SONUM 1F shall be executed by coordination with ATC.  
● VORDME KZN at **FL070** or below for all SID except SONUM 1F.

BEARINGS AND TRACKS ARE MAGNETIC  
ALTITUDES AND ELEVATIONS IN FEET  
DISTANCES IN KILOMETRES