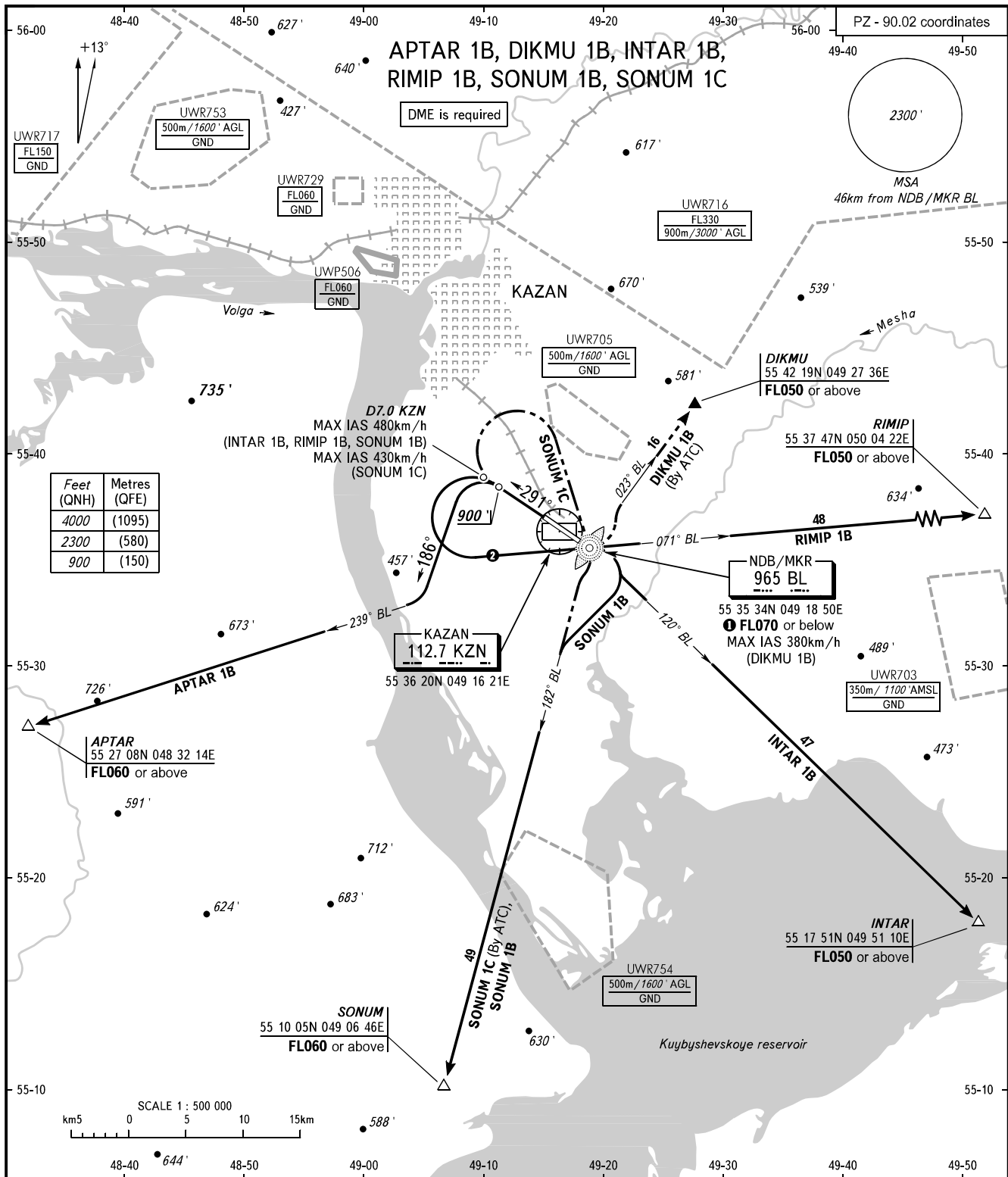


STANDARD DEPARTURE CHART
INSTRUMENT (SID) - ICAO

TRANSITION
ALTITUDE: 4000'

KAZAN, RUSSIA
KAZAN
RWY 29



START RADAR 120.300
119.400

NOTE
SID DIKMU 1B and SID SONUM 1C shall be executed by coordination with ATC.

- ① NDB/MKR BL at FL070 or below for all SID except SONUM 1C.
- ② DIKMU 1B (By ATC), INTAR 1B, RIMIP 1B, SONUM 1B.

BEARINGS AND TRACKS ARE MAGNETIC
ALTITUDES AND ELEVATIONS IN FEET
DISTANCES IN KILOMETRES