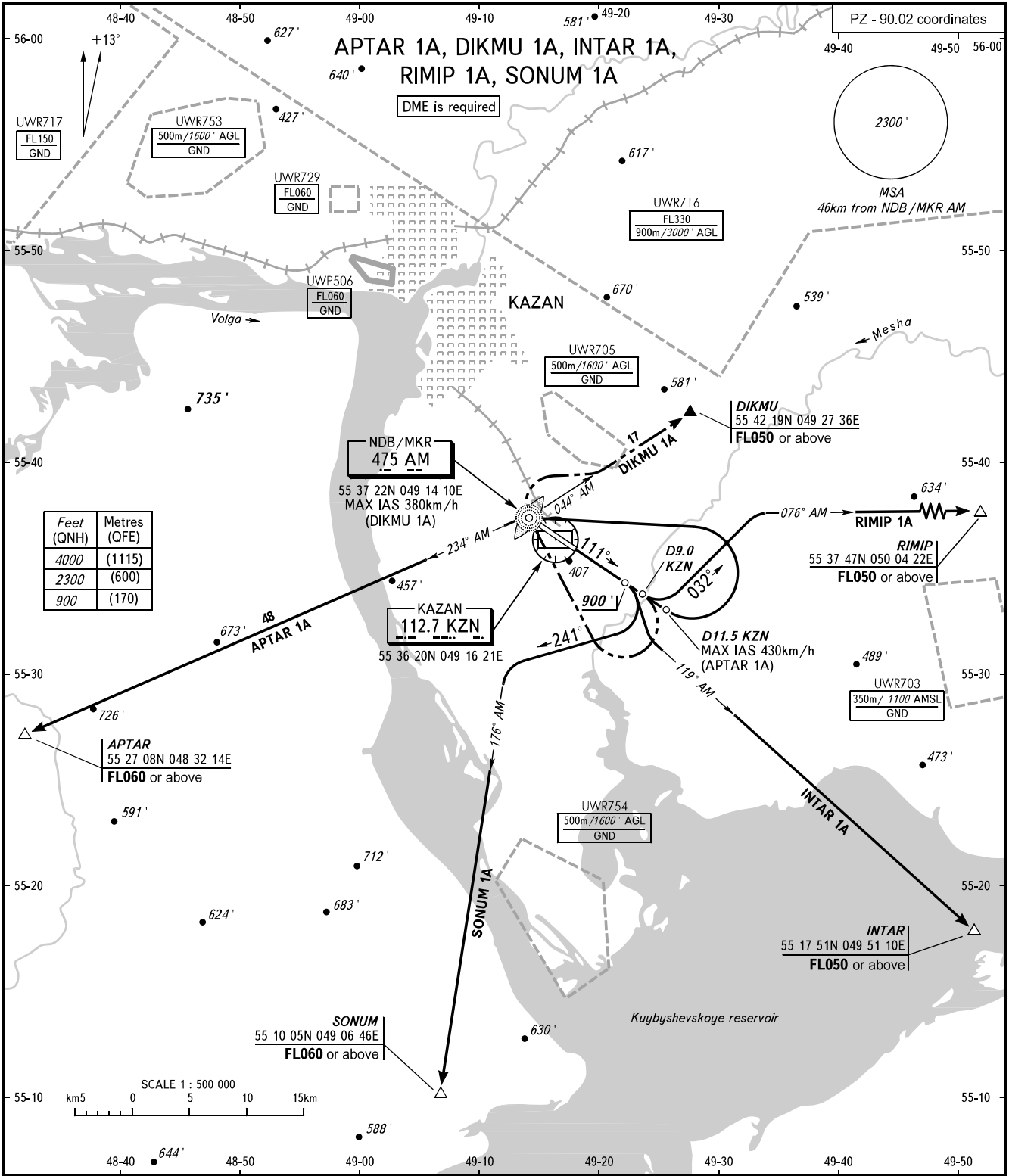


STANDARD DEPARTURE CHART
INSTRUMENT (SID) - ICAO

KAZAN, RUSSIA
KAZAN
RWY 11

TRANSITION
ALTITUDES: 4000'



START RADAR 120.300 119.400

NOTE
SID DIKMU 1A shall be executed by coordination with ATC.

BEARINGS AND TRACKS ARE MAGNETIC
ALTITUDES AND ELEVATIONS IN FEET
DISTANCES IN KILOMETRES

CHANGE: New chart