

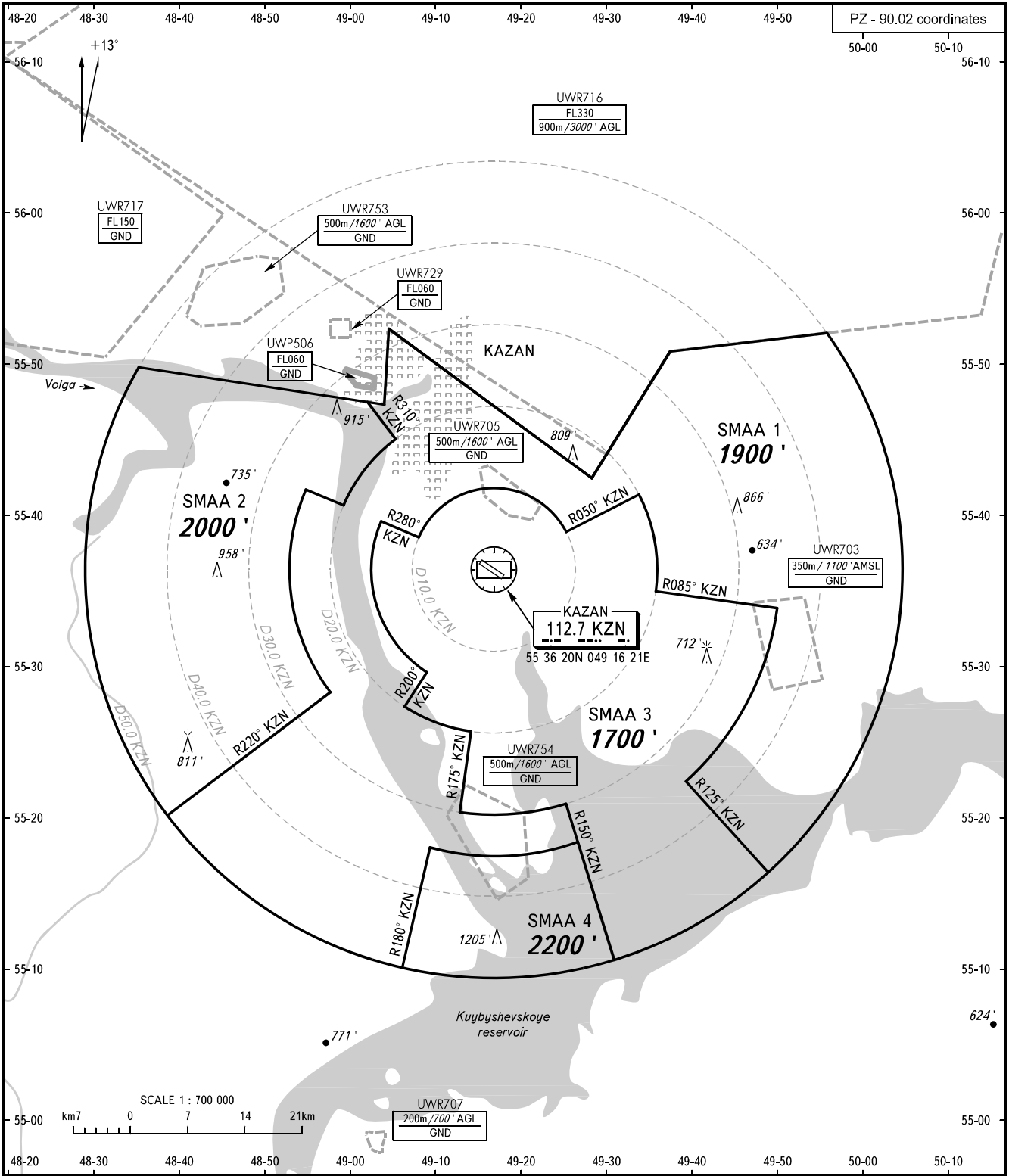
ATC SURVEILLANCE MINIMUM  
ALTITUDE CHART - ICAO

KAZAN, RUSSIA

KAZAN

ELEV  
**410'**

TRANSITION ALTITUDE: **4000'**



START **120.300**  
RADAR **119.400**

**WARNING:**

1. The chart may only be used for cross-checking of altitudes assigned while the aircraft is identified under radar control.
2. When vectoring is carried out under low-temperature conditions, minimum vectoring altitudes for IFR flight must be corrected by altimeter temperature correction.

COMMUNICATION FAILURE: As in accordance with the procedures described in AIP. The coordinates of SMAA are on the reverse of this page.

BEARINGS AND TRACKS ARE MAGNETIC  
ALTITUDES AND ELEVATIONS IN FEET  
DISTANCES IN KILOMETRES

CHANGE: New chart

<b>SURVEILLANCE MINIMUM ALTITUDE AREAS</b>		
IDENT	MNM ALT	LATERAL LIMITS (PZ-90.02 coordinates)
SMAA 1	1900'	552016.8N 0483848.7E - 552815.1N 0485719.7E then clockwise by arc of a circle radius of 25 KM centred at (553620.1N 0491620.6E) to 554137.6N 0485425.6E - 554034.4N 0485849.0E then clockwise by arc of a circle radius of 20 KM centred at (553620.1N 0491620.6E) to 554458.0N 0490454.8E - 554730.4N 0490131.7E then along Kazan CTR boundary to 551603.9N 0494754.1E - 552213.3N 0493823.8E then counterclockwise by arc of a circle radius of 35 KM centred at (553620.1N 0491620.6E) to 553332.9N 0494917.3E - 553445.6N 0493510.7E then counterclockwise by arc of a circle radius of 20 KM centred at (553620.1N 0491620.6E) to 554109.9N 0493323.2E - 553845.3N 0492451.4E then counterclockwise by arc of a circle radius of 10 KM centred at (553620.1N 0491620.6E) to 553827.6N 0490735.3E - 553931.1N 0490312.3E then counterclockwise by arc of a circle radius of 15 KM centred at (553620.1N 0491620.6E) to 552934.2N 0490831.8E - 552718.9N 0490556.1E then counterclockwise by arc of a circle radius of 20 KM centred at (553620.1N 0491620.6E) to 552539.9N 0491337.0E - 552019.8N 0491215.8E then counterclockwise by arc of a circle radius of 30 KM centred at (553620.1N 0491620.6E) to 552050.6N 0492430.8E - 551815.6N 0492551.9E then clockwise by arc of a circle radius of 35 KM centred at (553620.1N 0491620.6E) to 551758.1N 0490845.2E - 551013.9N 0490535.5E then along Kazan CTR boundary to 552016.8N 0483848.7E.
SMAA 2	2000'	554730.4N 0490131.7E - 554458.0N 0490454.8E then counterclockwise by arc of a circle radius of 20 KM centred at (553620.1N 0491620.6E) to 554034.4N 0485849.0E - 554137.6N 0485425.6E then counterclockwise by arc of a circle radius of 25 KM centred at (553620.1N 0491620.6E) to 552815.1N 0485719.7E - 552016.8N 0483848.7E then along Kazan CTR boundary to 554730.4N 0490131.7E.
SMAA 3	1700'	551030.7N 0492954.0E - 552050.6N 0492430.8E then clockwise by arc of a circle radius of 30 KM centred at (553620.1N 0491620.6E) to 552019.8N 0491215.8E - 552539.9N 0491337.0E then clockwise by arc of a circle radius of 20 KM centred at (553620.1N 0491620.6E) to 552718.9N 0490556.1E - 552934.2N 0490831.8E then clockwise by arc of a circle radius of 15 KM centred at (553620.1N 0491620.6E) to 553931.1N 0490312.3E - 553827.6N 0490735.3E then clockwise by arc of a circle radius of 10 KM centred at (553620.1N 0491620.6E) to 553845.3N 0492451.4E - 554109.9N 0493323.2E then clockwise by arc of a circle radius of 20 KM centred at (553620.1N 0491620.6E) to 553445.6N 0493510.7E - 553332.9N 0494917.3E then clockwise by arc of a circle radius of 35 KM centred at (553620.1N 0491620.6E) to 552213.3N 0493823.8E - 551603.9N 0494754.1E then along Kazan CTR boundary to 551030.7N 0492954.0E.
SMAA 4	2200'	551013.9N 0490535.5E - 551758.1N 0490845.2E then counterclockwise by arc of a circle radius of 35 KM centred at (553620.1N 0491620.6E) to 551815.6N 0492551.9E - 551030.7N 0492954.0E then along Kazan CTR boundary to 551013.9N 0490535.5E.