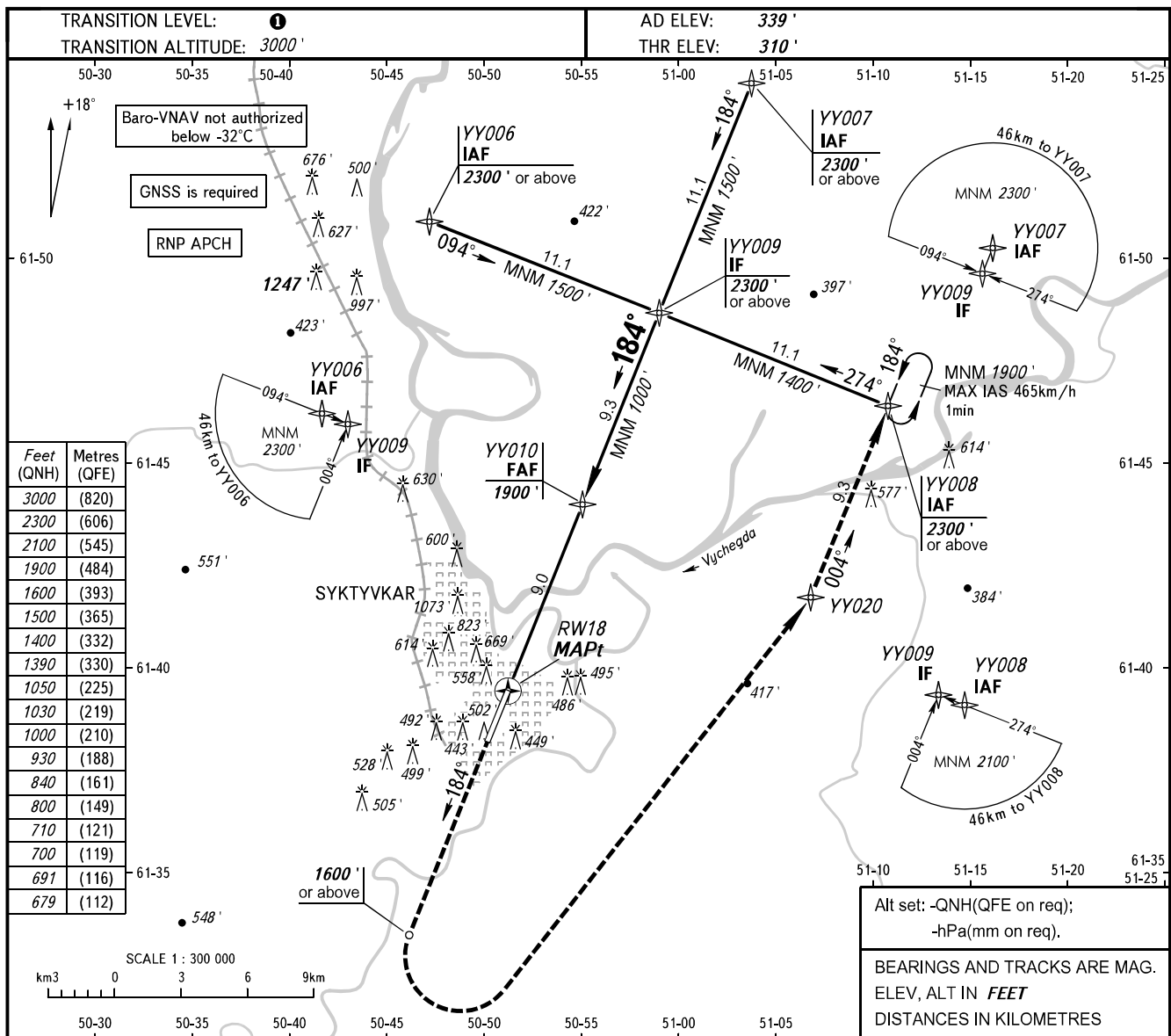


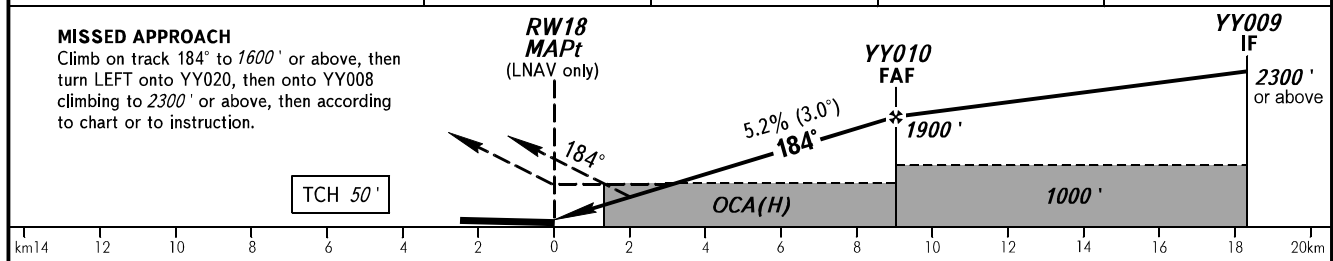
**INSTRUMENT
APPROACH
CHART - ICAO**

SIVKAR KRUG 124.600

SYKTYVKAR, RUSSIA
SYKTYVKAR
RNP RWY 18



DIST to RW18	2.0	4.0	6.0	9.0
ALTITUDE	710'	1050'	1390'	1900'



OCA(H)		A	B	C	D								
Straight-in	LNAV	800' (490')	800' (490')	800' (490')	800' (490')								
	LNAV/VNAV	679' (369')	691' (381')	700' (390')	710' (400')								
Approach													
Circling		800' (490')	840' (510')	930' (600')	1030' (700')								
GROUND SPEED		km/h	150	180	210	240	270	300	330	360	390	420	450
RATE OF DESCENT		m/s	2.2	2.6	3.0	3.5	3.9	4.3	4.8	5.2	5.6	6.1	6.5
		ft/min	427	512	597	682	768	853	938	1024	1109	1194	1280

TRANSITION LEVEL:
- FL040 when QNH is 1013 hPa (760mm mercury column) or above;
- FL050 when QNH is 977 hPa (733mm mercury column) or above but less than 1013 hPa (760mm mercury column);
- FL060 when QNH is less than 977 hPa (733mm mercury column).

WARNING
Visual manoeuvring west of the aerodrome is PROHIBITED.