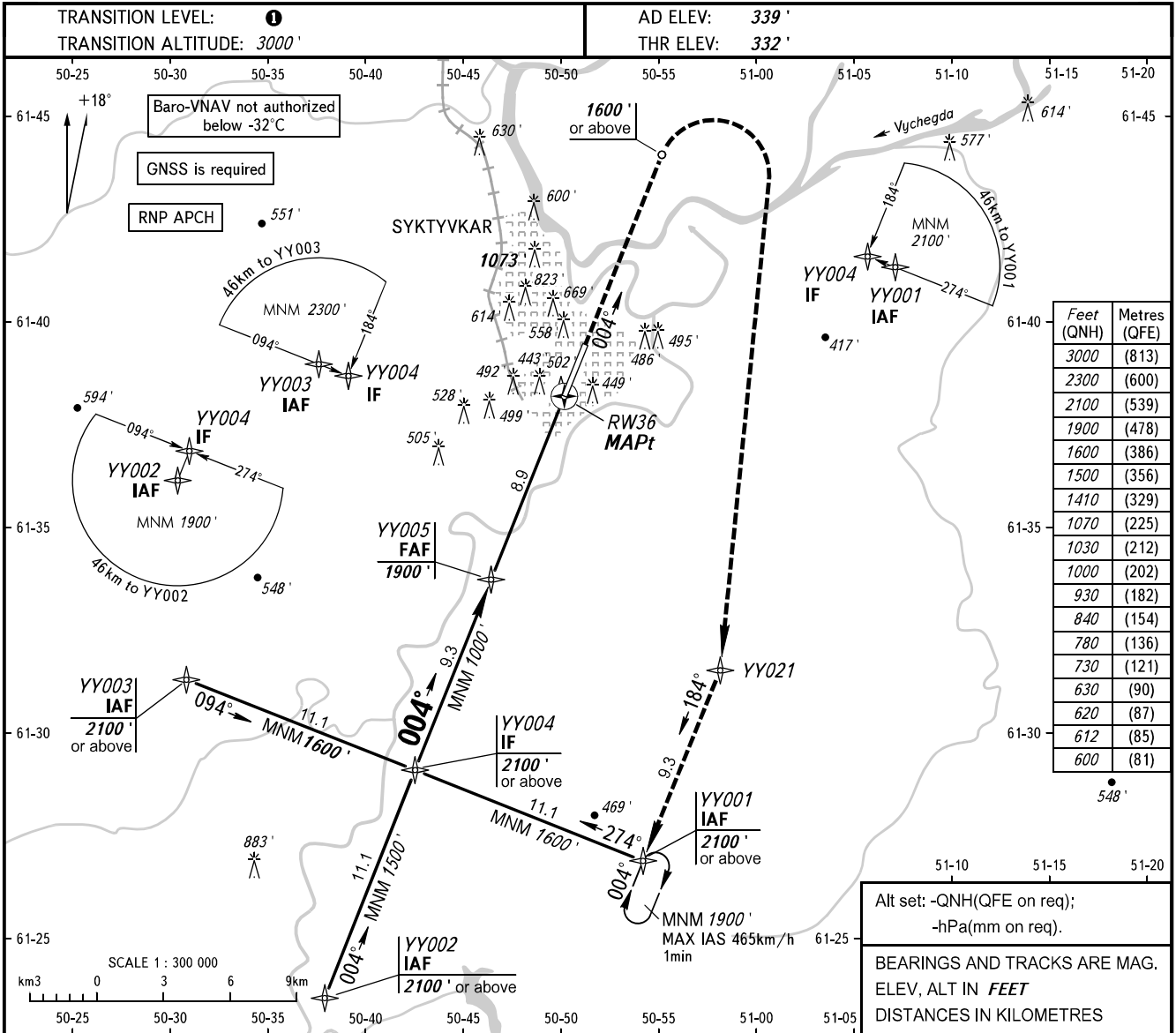


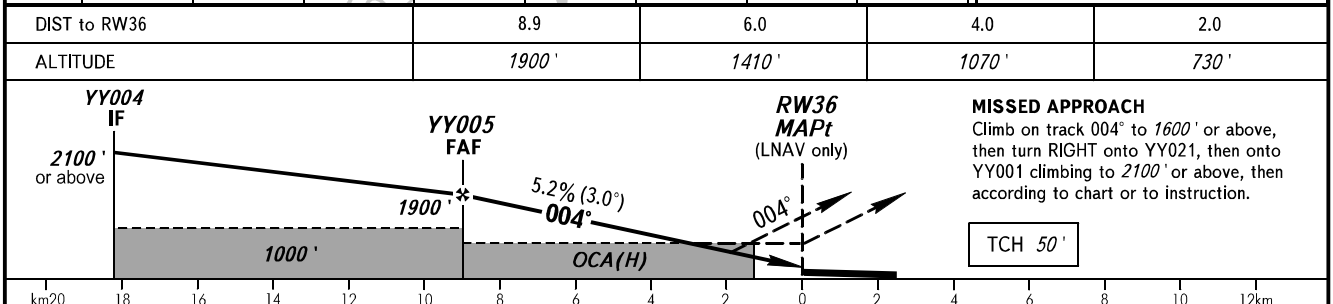
**INSTRUMENT
APPROACH
CHART - ICAO**

SIVKAR KRUG 124.600

**SYKTYVKAR, RUSSIA
SYKTYVKAR
RNP RWY 36**

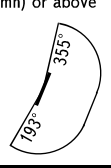


Alt set: -QNH(QFE on req);
-hPa(mm on req).
BEARINGS AND TRACKS ARE MAG.
ELEV, ALT IN FEET
DISTANCES IN KILOMETRES



OCA(H)		A	B	C	D								
Straight-in	LNAV	720' (390')	720' (390')	720' (390')	720' (390')								
	LNAV/VNAV	600' (269')	612' (281')	620' (289')	630' (299')								
Approach													
Circling		780' (450')	840' (510')	930' (600')	1030' (700')								
GROUND SPEED		km/h	150	180	210	240	270	300	330	360	390	420	450
RATE OF DESCENT		m/s	2.2	2.6	3.0	3.5	3.9	4.3	4.8	5.2	5.6	6.1	6.5
		ft/min	427	512	597	682	768	853	938	1024	1109	1194	1280

1 TRANSITION LEVEL:
- FL040 when QNH is 1013 hPa (760mm mercury column) or above;
- FL050 when QNH is 977 hPa (733mm mercury column) or above but less than 1013 hPa (760mm mercury column);
- FL060 when QNH is less than 977 hPa (733mm mercury column).
WARNING
Visual manoeuvring west of the aerodrome is PROHIBITED.



CHANGE: New chart