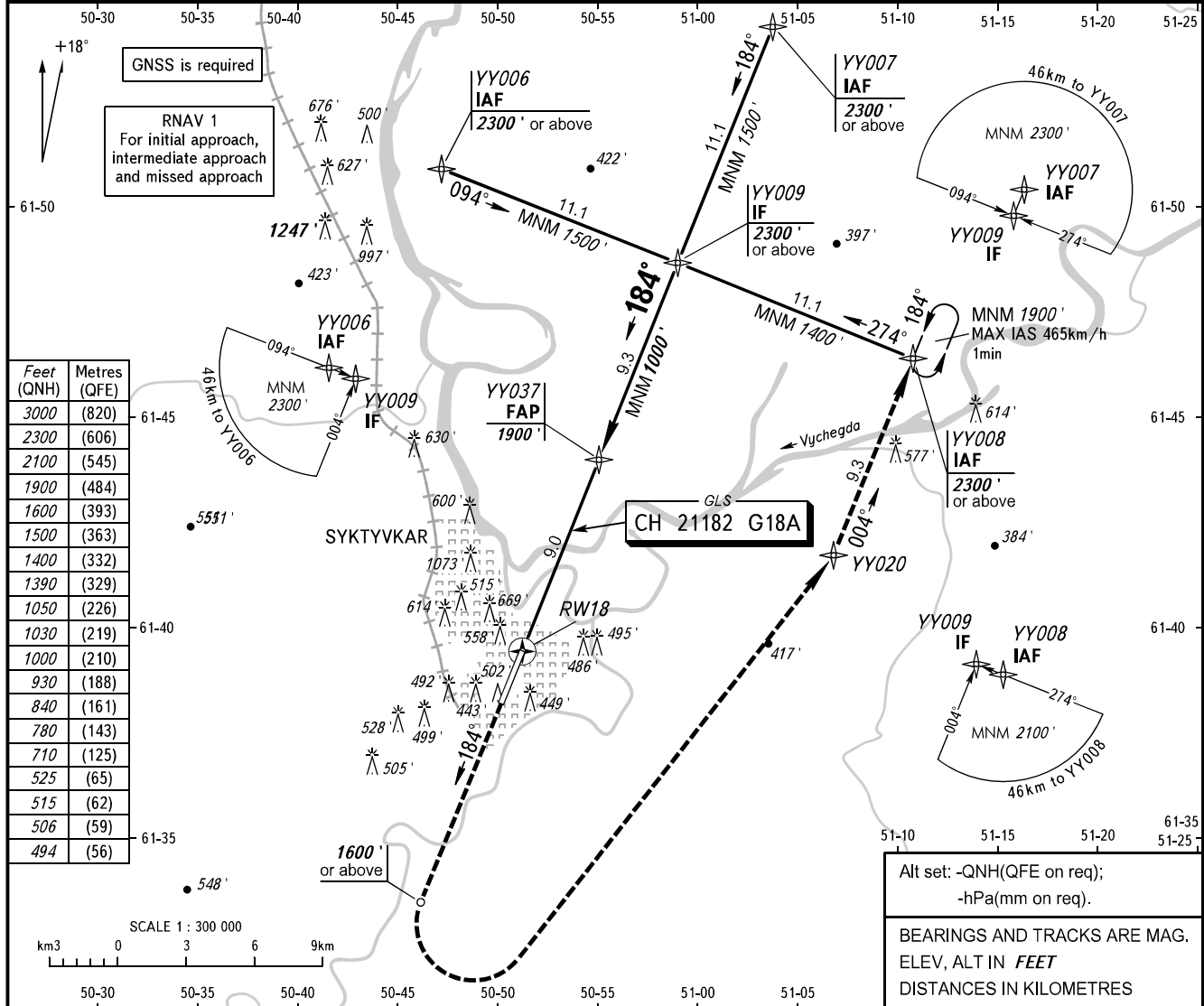


**INSTRUMENT  
APPROACH  
CHART - ICAO**

SIVKAR KRUG 124.600

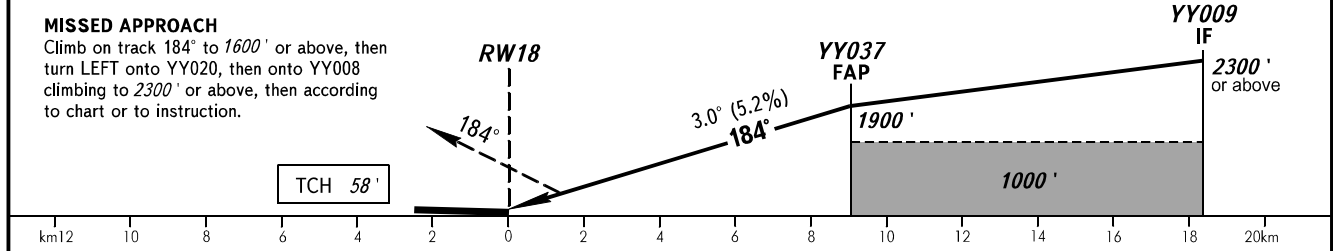
**SYKTYVKAR, RUSSIA**  
SYKTYVKAR  
GLS RWY 18

<b>GBAS</b> CH 21182 G18A	<b>TRANSITION LEVEL:</b> 1 <b>TRANSITION ALTITUDE:</b> 3000'	<b>AD ELEV:</b> 339' <b>THR ELEV:</b> 310'
------------------------------	---	---



Feet (QNH)	Metres (QFE)
3000	(820)
2300	(606)
2100	(545)
1900	(484)
1600	(393)
1500	(363)
1400	(332)
1390	(329)
1050	(226)
1030	(219)
1000	(210)
930	(188)
840	(161)
780	(143)
710	(125)
525	(65)
515	(62)
506	(59)
494	(56)

DIST to RW18	2.0	4.0	6.0	9.0
ALTITUDE	710'	1050'	1390'	1900'



OCA(H)		A	B	C	D	TRANSITION LEVEL:									
Straight-in	<b>CAT I</b>	494' (184')	506' (196')	515' (205')	525' (215')	- FL040 when QNH is 1013 hPa (760mm mercury column) or above; - FL050 when QNH is 977 hPa (733mm mercury column) or above but less than 1013 hPa (760mm mercury column); - FL060 when QNH is less than 977 hPa (733mm mercury column).									
	Approach					- FL040 when QNH is 1013 hPa (760mm mercury column) or above; - FL050 when QNH is 977 hPa (733mm mercury column) or above but less than 1013 hPa (760mm mercury column); - FL060 when QNH is less than 977 hPa (733mm mercury column).									
Circling		780' (450')	840' (510')	930' (600')	1030' (700')	<b>WARNING</b> Visual manoeuvring west of the aerodrome is PROHIBITED.									
GROUND SPEED		km/h	150	180	210	240	270	300	330	360	390	420	450		
RATE OF DESCENT		m/s	2.2	2.6	3.0	3.5	3.9	4.3	4.8	5.2	5.6	6.1	6.5		
		ft/min	427	512	597	682	768	853	938	1024	1109	1194	1280		