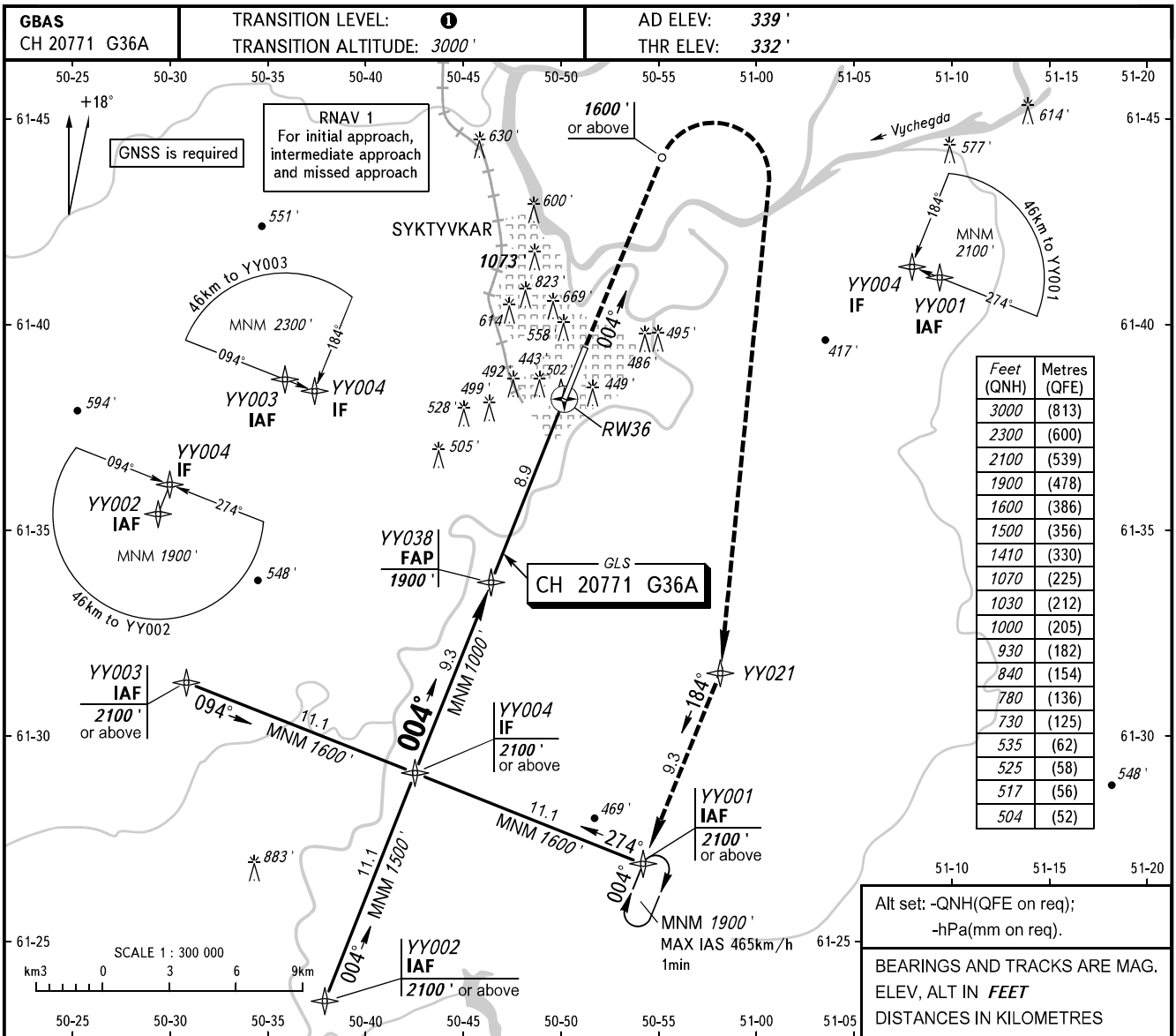


**INSTRUMENT  
APPROACH  
CHART - ICAO**

SIVKAR KRUG 124.600

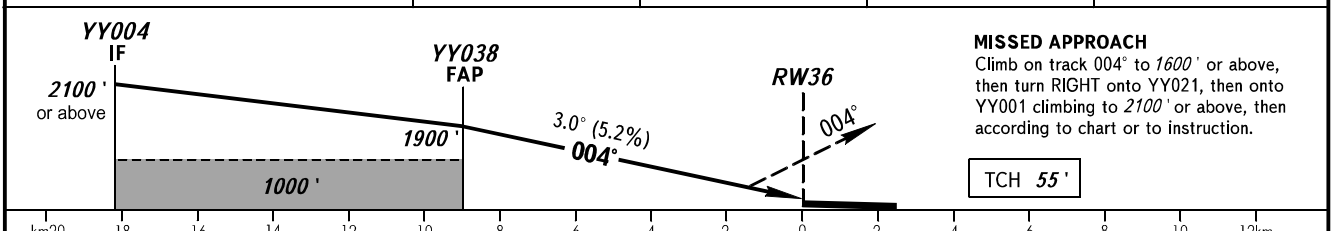
**SYKTYVKAR, RUSSIA  
SYKTYVKAR  
GLS RWY 36**



Feet (QNH)	Metres (QFE)
3000	(813)
2300	(600)
2100	(539)
1900	(478)
1600	(386)
1500	(356)
1410	(330)
1070	(225)
1030	(212)
1000	(205)
930	(182)
840	(154)
780	(136)
730	(125)
535	(62)
525	(58)
517	(56)
504	(52)

Alt set: -QNH(QFE on req);  
-hPa(mm on req).  
BEARINGS AND TRACKS ARE MAG.  
ELEV, ALT IN FEET  
DISTANCES IN KILOMETRES

DIST to RW36	8.9	6.0	4.0	2.0
ALTITUDE	1900'	1410'	1070'	730'



**MISSED APPROACH**  
Climb on track 004° to 1600' or above, then turn RIGHT onto YY021, then onto YY001 climbing to 2100' or above, then according to chart or to instruction.  
**TCH 55'**

OCA(H)		A	B	C	D	① TRANSITION LEVEL:									
Straight-in	CAT I	504' (173')	517' (186')	525' (194')	535' (204')	- FL040 when QNH is 1013 hPa (760mm mercury column) or above; - FL050 when QNH is 977 hPa (733mm mercury column) or above but less than 1013 hPa (760mm mercury column); - FL060 when QNH is less than 977 hPa (733mm mercury column).									
	Approach					<b>WARNING</b> Visual manoeuvring west of the aerodrome is PROHIBITED.									
Circling		780' (450')	840' (510')	930' (600')	1030' (700')										
GROUND SPEED		km/h	150	180	210	240	270	300	330	360	390	420	450		
RATE OF DESCENT		m/s	2.2	2.6	3.0	3.5	3.9	4.3	4.8	5.2	5.6	6.1	6.5		
		ft/min	427	512	597	682	768	853	938	1024	1109	1194	1280		

CHANGE: New chart