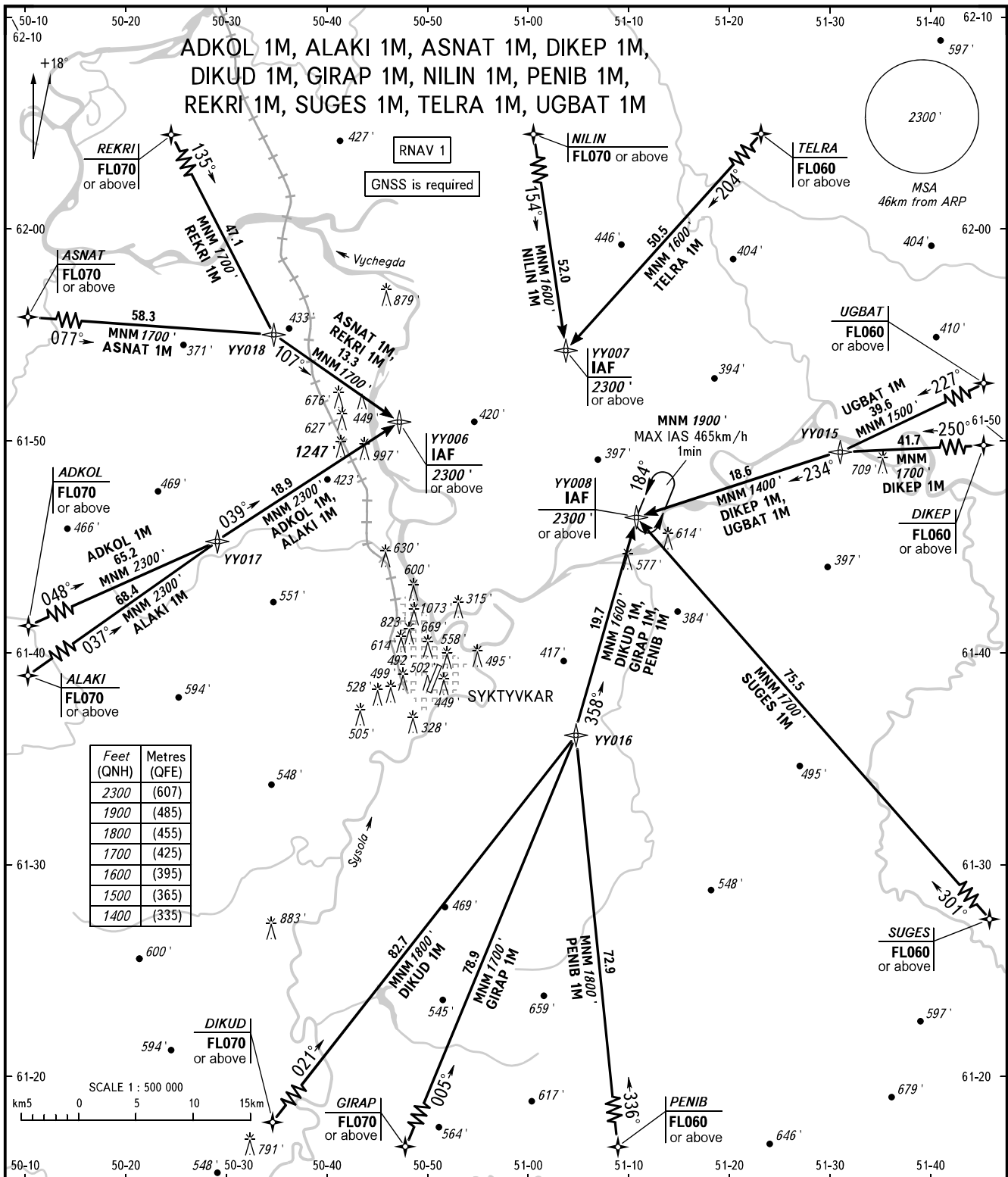


STANDARD ARRIVAL CHART  
INSTRUMENT (STAR) - ICAO

TRANSITION  
LEVEL: **1**

SYKTYVKAR, RUSSIA  
SYKTYVKAR  
RNAV RWY 18



SIVKAR KRUG 124.600

- 1** TRANSITION LEVEL:
- FL040 when QNH is 1013 hPa (760mm mercury column) or above;
  - FL050 when QNH is 977 hPa (733mm mercury column) or above but less than 1013 hPa (760mm mercury column);
  - FL060 when QNH is less than 977 hPa (733mm mercury column).

BEARINGS AND TRACKS ARE MAGNETIC  
ALTITUDES AND ELEVATIONS IN FEET  
DISTANCES IN KILOMETRES