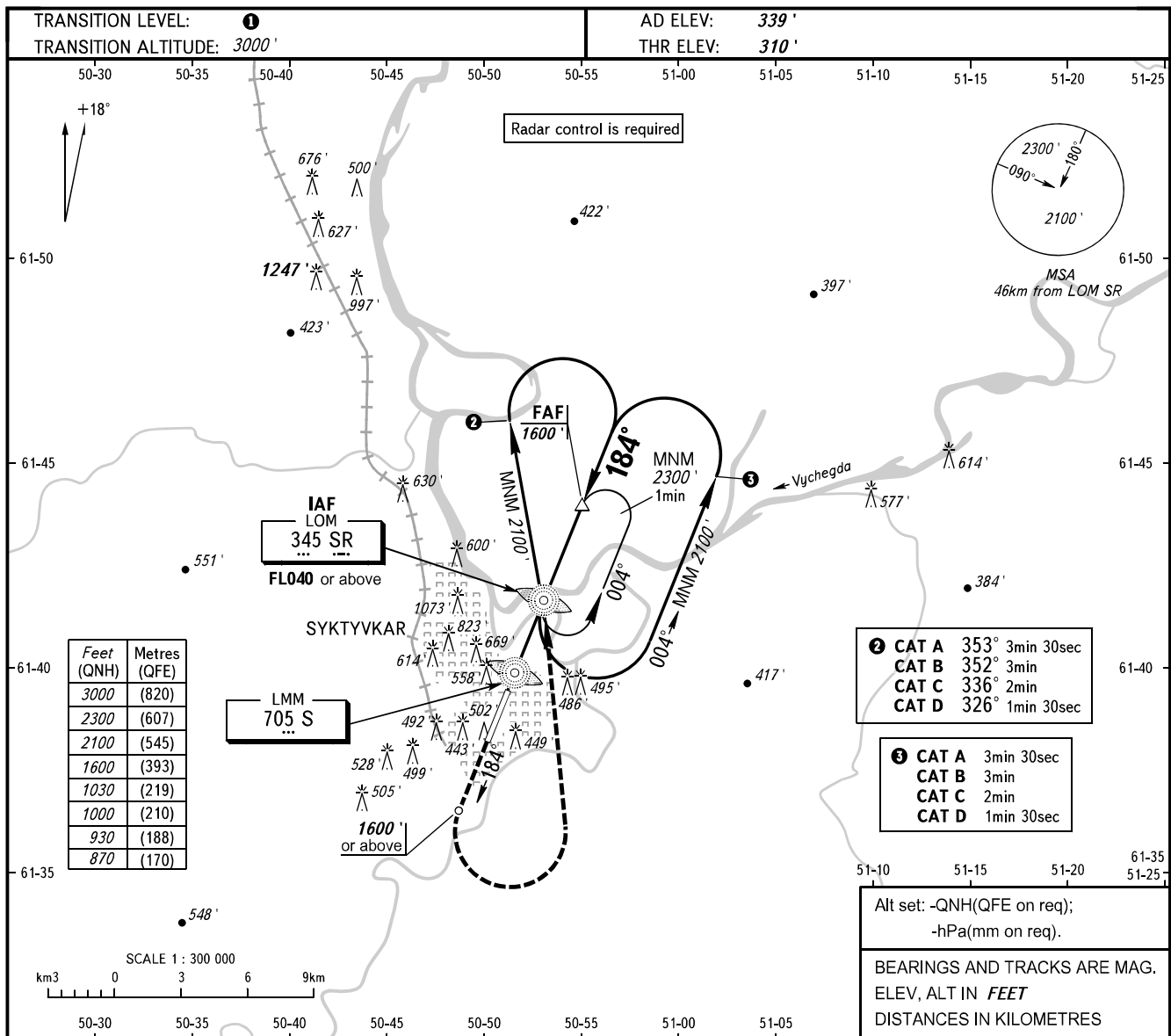


**INSTRUMENT  
APPROACH  
CHART - ICAO**

SIVKAR KRUG 124.600

**SYKTYVKAR, RUSSIA**  
SYKTYVKAR  
NDB RWY 18



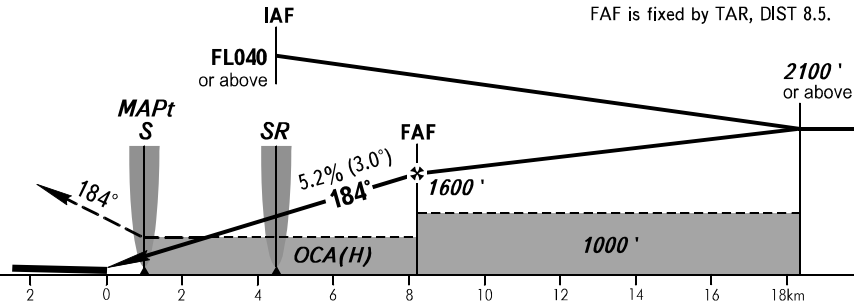
|         |      |            |
|---------|------|------------|
| ② CAT A | 353° | 3min 30sec |
| CAT B   | 352° | 3min       |
| CAT C   | 336° | 2min       |
| CAT D   | 326° | 1min 30sec |

|         |            |
|---------|------------|
| ⑤ CAT A | 3min 30sec |
| CAT B   | 3min       |
| CAT C   | 2min       |
| CAT D   | 1min 30sec |

Alt set: -QNH(QFE on req);  
-hPa(mm on req).

BEARINGS AND TRACKS ARE MAG.  
ELEV, ALT IN FEET  
DISTANCES IN KILOMETRES

**MISSED APPROACH**  
Climb on track 184° to 1600' or above, then turn LEFT onto LOM SR climbing to 2100' or above, then according to chart or to instruction.



|                 |          | OCA(H)      |             |             |              |     |     |     |     |      |      |      |      |
|-----------------|----------|-------------|-------------|-------------|--------------|-----|-----|-----|-----|------|------|------|------|
|                 |          | A           | B           | C           | D            |     |     |     |     |      |      |      |      |
| Straight-in     | Approach | 870' (560') | 870' (560') | 870' (560') | 870' (560')  |     |     |     |     |      |      |      |      |
|                 | Circling | 870' (540') | 870' (540') | 930' (600') | 1030' (700') |     |     |     |     |      |      |      |      |
| GROUND SPEED    |          | km/h        | 150         | 180         | 210          | 240 | 270 | 300 | 330 | 360  | 390  | 420  | 450  |
| RATE OF DESCENT |          | m/s         | 2.2         | 2.6         | 3.0          | 3.5 | 3.9 | 4.3 | 4.8 | 5.2  | 5.6  | 6.1  | 6.5  |
|                 |          | ft/min      | 427         | 512         | 597          | 682 | 768 | 853 | 938 | 1024 | 1109 | 1194 | 1280 |

① TRANSITION LEVEL:  
- FL040 when QNH is 1013 hPa (760mm mercury column) or above;  
- FL050 when QNH is 977 hPa (733mm mercury column) or above but less than 1013 hPa (760mm mercury column);  
- FL060 when QNH is less than 977 hPa (733mm mercury column).  
**WARNING:**  
1. Visual manoeuvring west of the aerodrome is PROHIBITED.  
2. MAPt at LMM S. Timing not authorized for defining MAPt.

