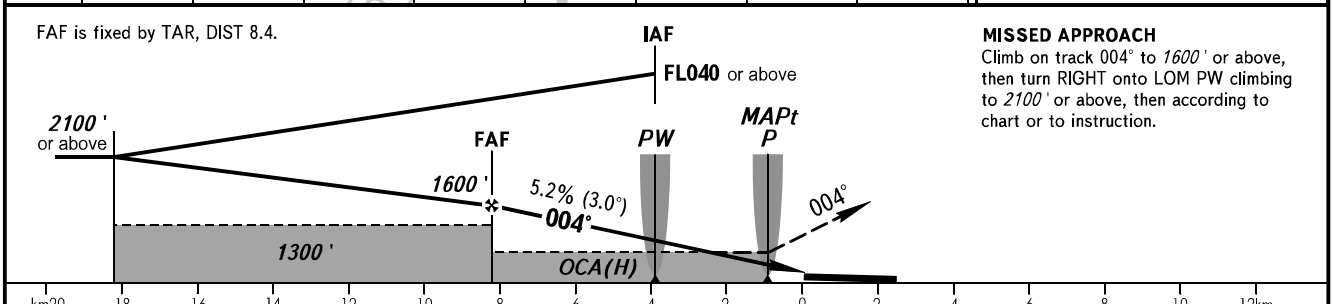
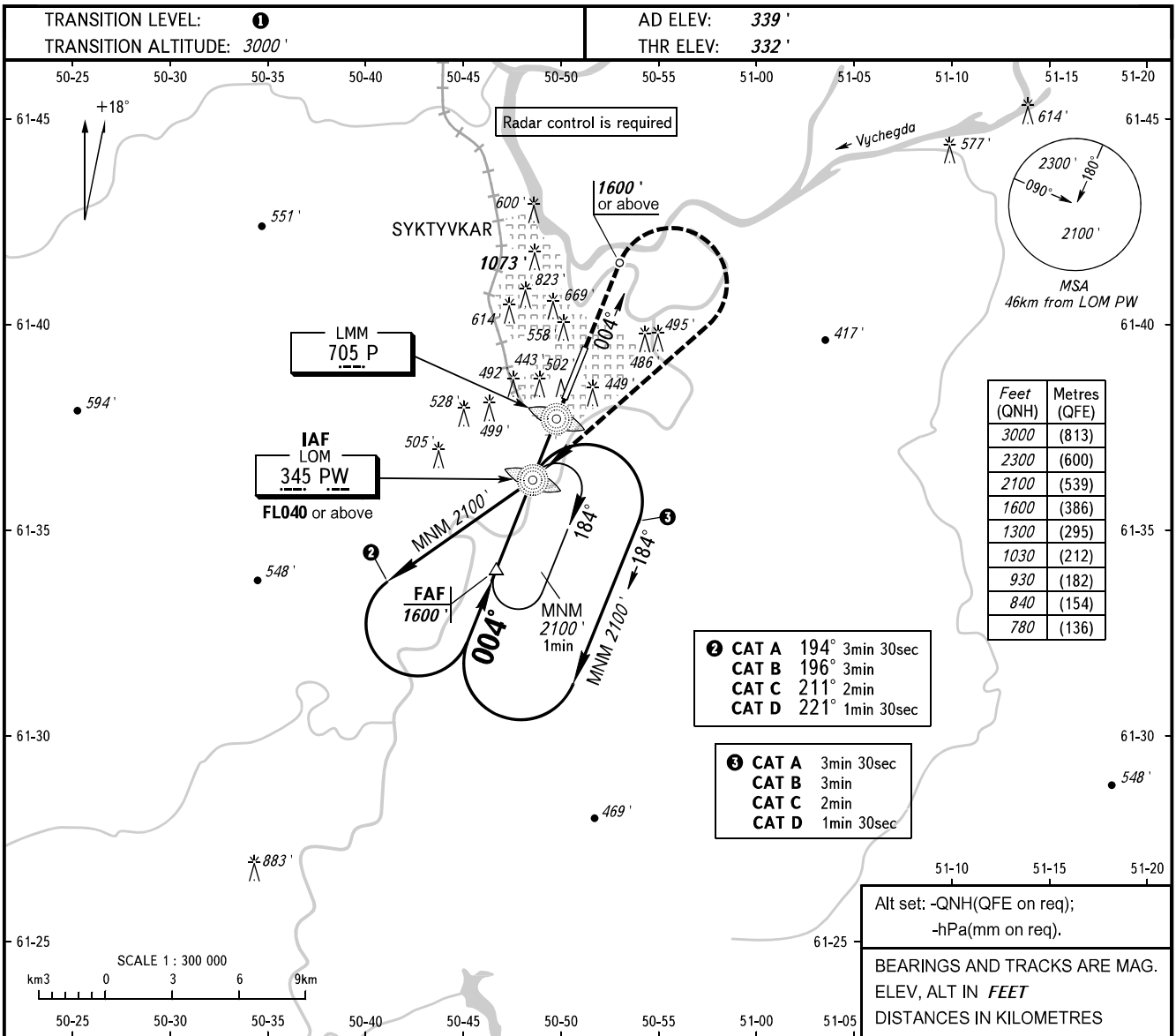


**INSTRUMENT  
APPROACH  
CHART - ICAO**

SIVKAR KRUG 124.600

**SYKTYVKAR, RUSSIA  
SYKTYVKAR  
NDB RWY 36**



**MISSED APPROACH**  
Climb on track 004° to 1600' or above, then turn RIGHT onto LOM PW climbing to 2100' or above, then according to chart or to instruction.

OCA(H)		A	B	C	D								
Straight-in	Approach	780' (450')	780' (450')	780' (450')	780' (450')								
	Approach												
Circling		780' (450')	840' (510')	930' (600')	1030' (700')								
GROUND SPEED		km/h	150	180	210	240	270	300	330	360	390	420	450
RATE OF DESCENT		m/s	2.2	2.6	3.0	3.5	3.9	4.3	4.8	5.2	5.6	6.1	6.5
		ft/min	427	512	597	682	768	853	938	1024	1109	1194	1280

**1** TRANSITION LEVEL:  
- FL040 when QNH is 1013 hPa (760mm mercury column) or above;  
- FL050 when QNH is 977 hPa (733mm mercury column) or above but less than 1013 hPa (760mm mercury column);  
- FL060 when QNH is less than 977 hPa (733mm mercury column).

**WARNING:**  
1. Visual manoeuvring west of the aerodrome is PROHIBITED.  
2. MAPt at LMM P. Timing not authorized for defining MAPt.

CHANGE: New chart