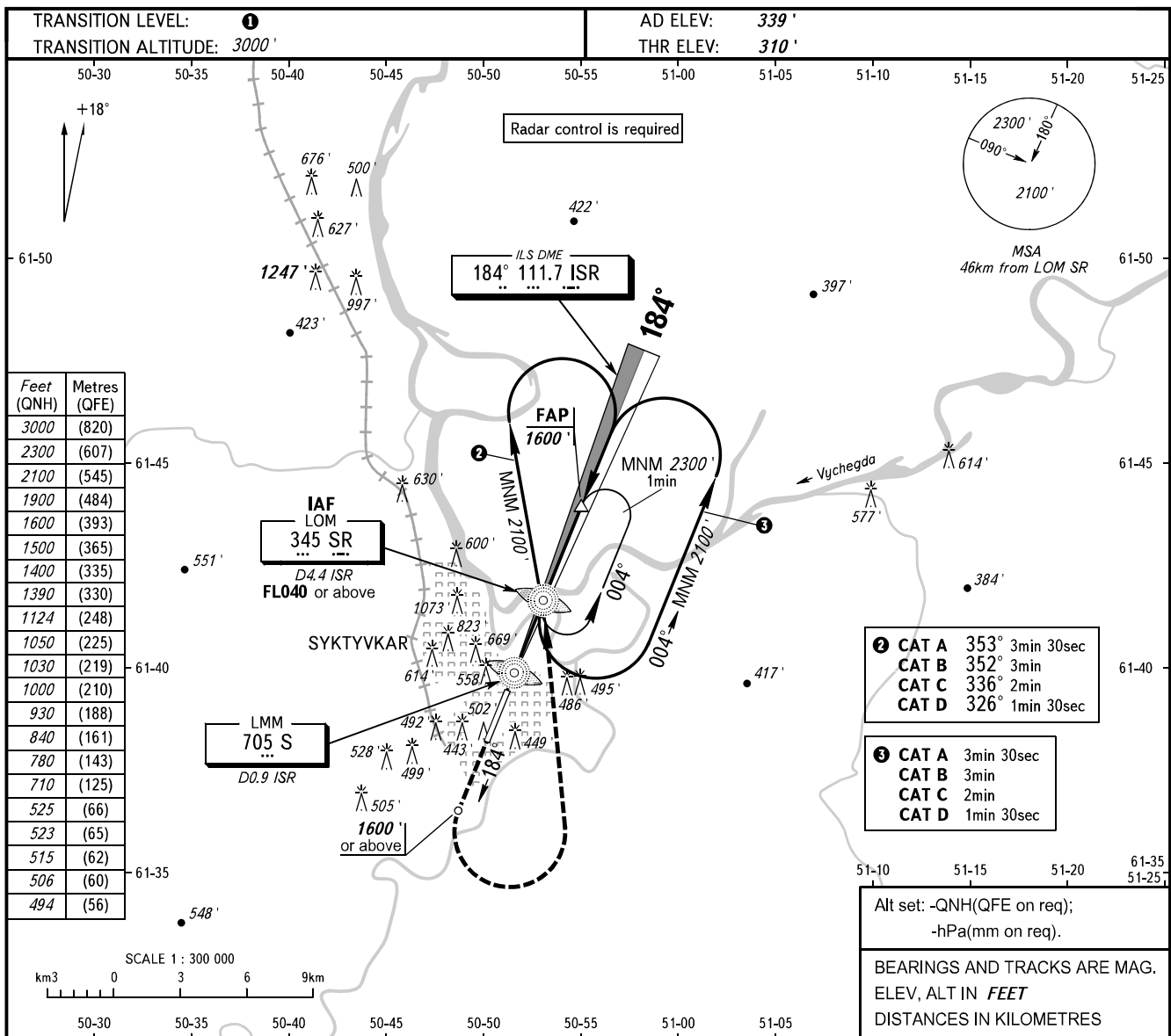


**INSTRUMENT
APPROACH
CHART - ICAO**

SIVKAR KRUG 124.600

SYKTYVKAR, RUSSIA
SYKTYVKAR
ILS Z RWY 18 CAT I

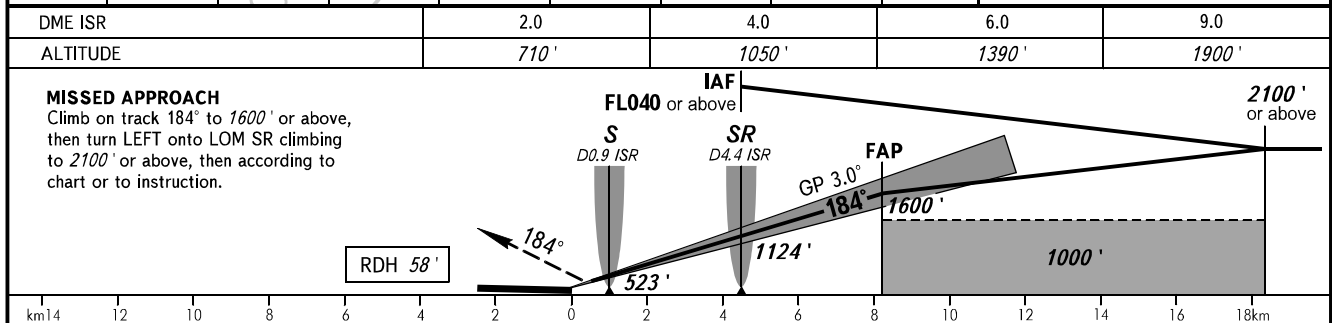


② CAT A	353°	3min 30sec
CAT B	352°	3min
CAT C	336°	2min
CAT D	326°	1min 30sec

③ CAT A	3min 30sec
CAT B	3min
CAT C	2min
CAT D	1min 30sec

Alt set: -QNH(QFE on req);
-hPa(mm on req).

BEARINGS AND TRACKS ARE MAG.
ELEV, ALT IN FEET
DISTANCES IN KILOMETRES



OCA(H)		A	B	C	D								
Straight-in Approach	CAT I	494' (184')	506' (196')	515' (205')	525' (215')								
Circling		780' (450')	840' (510')	930' (600')	1030' (700')								
GROUND SPEED		km/h	150	180	210	240	270	300	330	360	390	420	450
RATE OF DESCENT		m/s	2.2	2.6	3.0	3.5	3.9	4.3	4.8	5.2	5.6	6.1	6.5
		ft/min	427	512	597	682	768	853	938	1024	1109	1194	1280

① TRANSITION LEVEL:
- FL040 when QNH is 1013 hPa (760mm mercury column) or above;
- FL050 when QNH is 977 hPa (733mm mercury column) or above but less than 1013 hPa (760mm mercury column);
- FL060 when QNH is less than 977 hPa (733mm mercury column).

WARNING:
1. Visual manoeuvring west of the aerodrome is PROHIBITED.
2. ILS DME reads zero at RWY 18 THR.