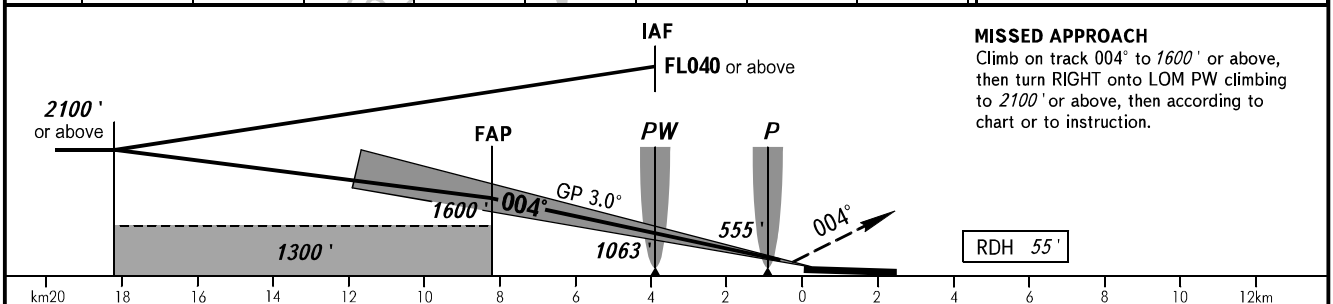
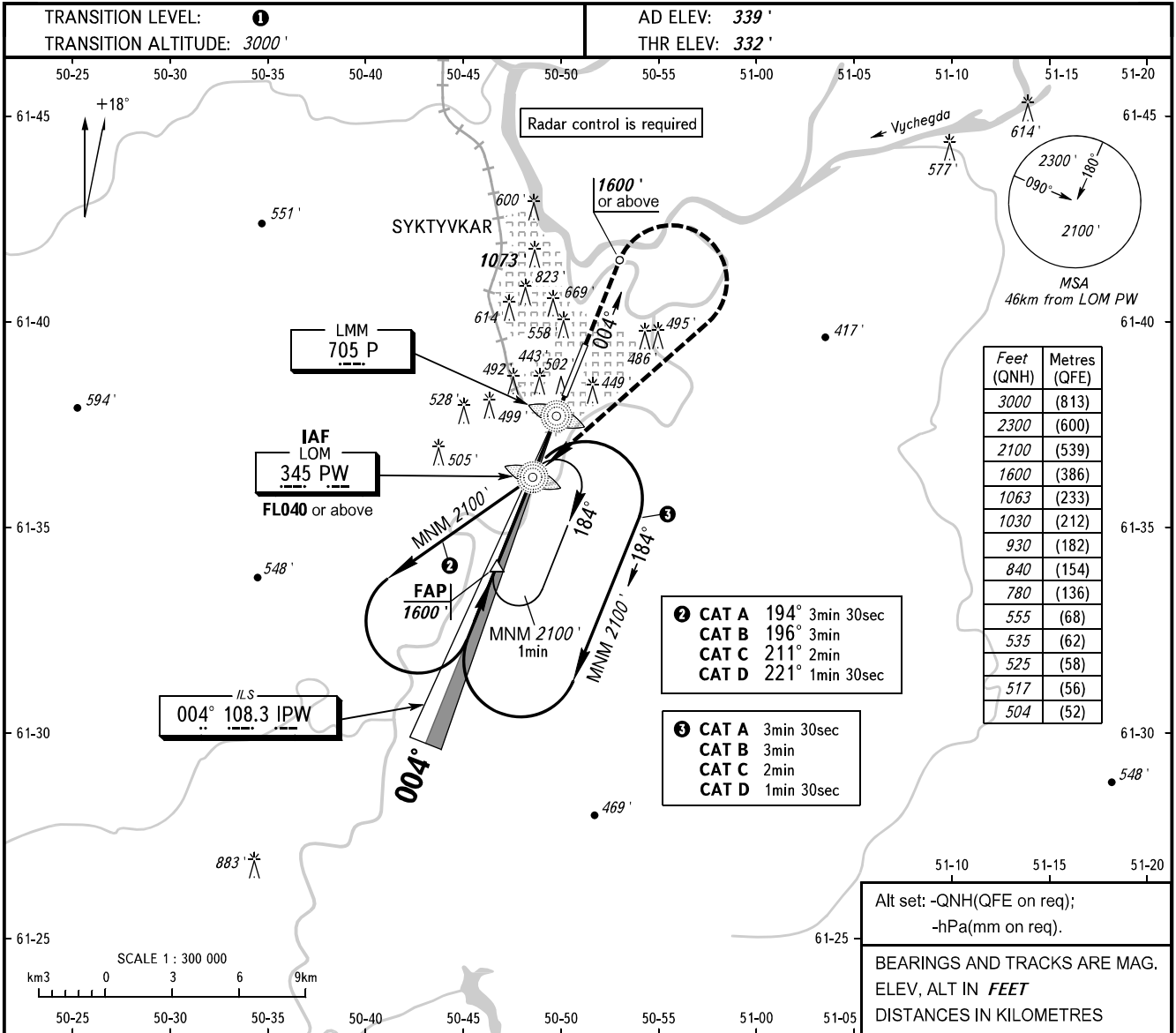


**INSTRUMENT  
APPROACH  
CHART - ICAO**

SIVKAR KRUG 124.600

**SYKTYVKAR, RUSSIA**  
SYKTYVKAR  
ILS Z RWY 36 CAT I



OCA(H)		A	B	C	D								
Straight-in	CAT I	504' (173')	517' (186')	525' (194')	535' (204')								
	Approach												
Circling		780' (450')	840' (510')	930' (600')	1030' (700')								
GROUND SPEED		km/h	150	180	210	240	270	300	330	360	390	420	450
RATE OF DESCENT		m/s	2.2	2.6	3.0	3.5	3.9	4.3	4.8	5.2	5.6	6.1	6.5
		ft/min	427	512	597	682	768	853	938	1024	1109	1194	1280

① TRANSITION LEVEL:  
- FL040 when QNH is 1013 hPa (760mm mercury column) or above;  
- FL050 when QNH is 977 hPa (733mm mercury column) or above but less than 1013 hPa (760mm mercury column);  
- FL060 when QNH is less than 977 hPa (733mm mercury column).

**WARNING**  
Visual manoeuvring west of the aerodrome is PROHIBITED.

CHANGE: New chart