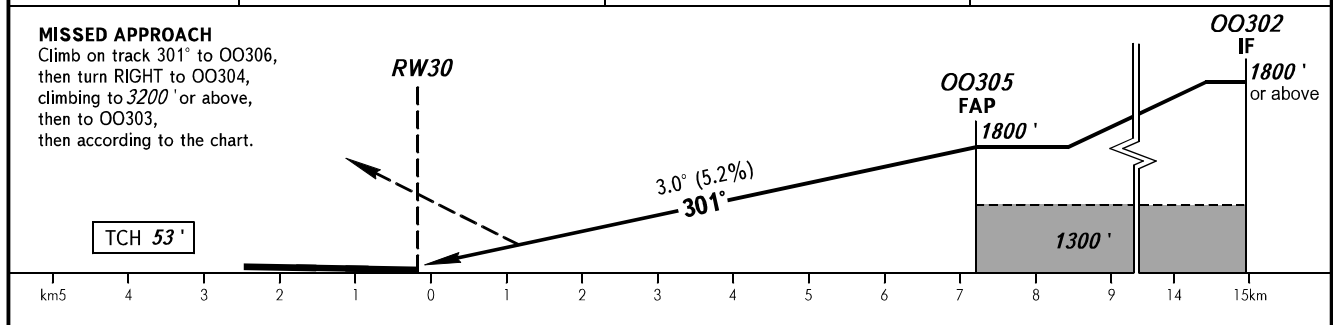
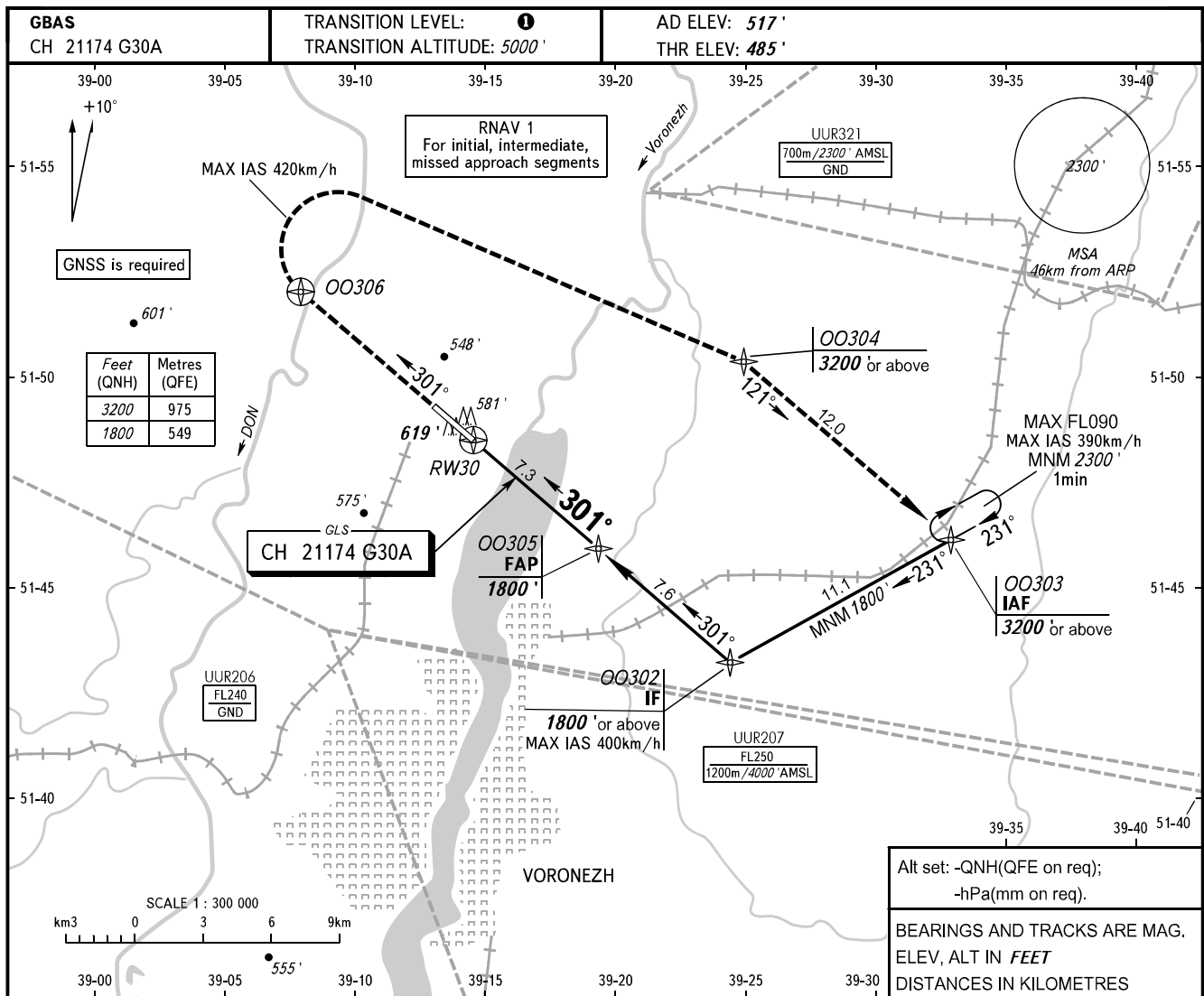


**INSTRUMENT
APPROACH
CHART - ICAO**

**VORONEZH, RUSSIA
CHERTOVITSKOYE
GLS RWY 30**

TOWER	118.300
-------	---------



OCA(H)		A	B	C	D	① TRANSITION LEVEL:							
Straight-in	2.5%	748' (263')	761' (271')	769' (284')	779' (294')	- FL060 when QNH is 1013 hPa (760mm mercury column) or above;							
	4.0%	689' (204')	702' (217')	710' (225')	720' (235')	- FL070 when QNH is 977 hPa (733mm mercury column) or above, but less than 1013 hPa (760mm mercury column);							
Circling		1000' (478')	1010' (493')	1130' (606')	1210' (689')	- FL080 when QNH is less than 977 hPa (733mm mercury column).							
GROUND SPEED		km/h	150	180	210	240	270	300	330	360	390	420	450
RATE OF DESCENT		m/s	2.2	2.6	3.0	3.5	3.9	4.3	4.8	5.2	5.6	6.1	6.5
		ft/min	427	512	597	682	768	853	938	1024	1109	1194	1280