

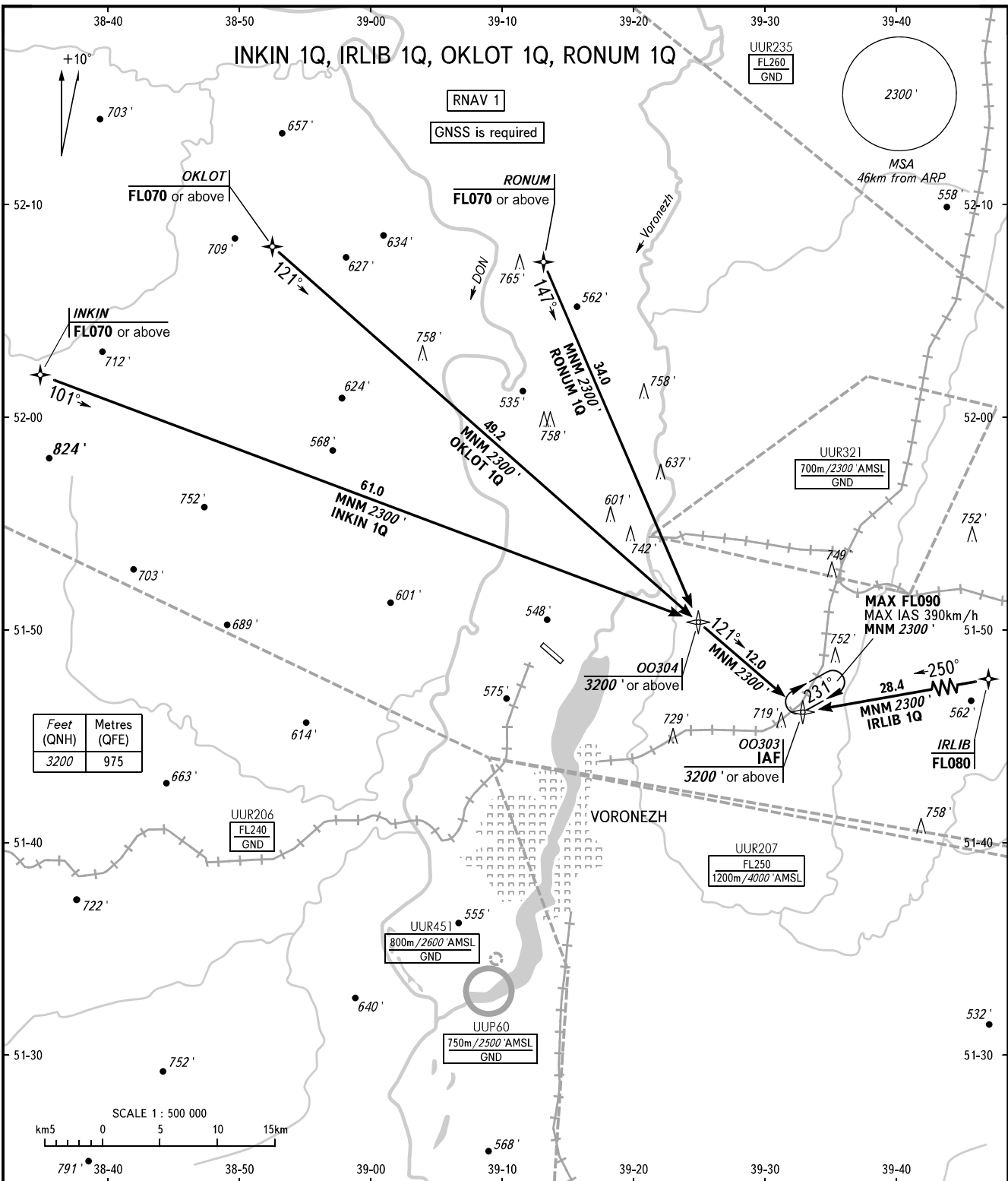
STANDARD ARRIVAL CHART
INSTRUMENT (STAR) - ICAO

VORONEZH, RUSSIA

CHERTOVITSKOYE

RNAV RWY 30

TRANSITION
LEVEL: 1



APPROACH TOWER 125.900
118.300

- 1 TRANSITION LEVEL:
- FL060 when QNH is 1013 hPa (760mm mercury column) or above;
 - FL070 when QNH is 977 hPa (733mm mercury column) or above, but less than 1013 hPa (760mm mercury column);
 - FL080 when QNH is less than 977 hPa (733mm mercury column).

BEARINGS AND TRACKS ARE MAGNETIC
ALTITUDES AND ELEVATIONS IN FEET
DISTANCES IN KILOMETRES

Alt set: -QNH(QFE on req);
-hPa(mm on req).