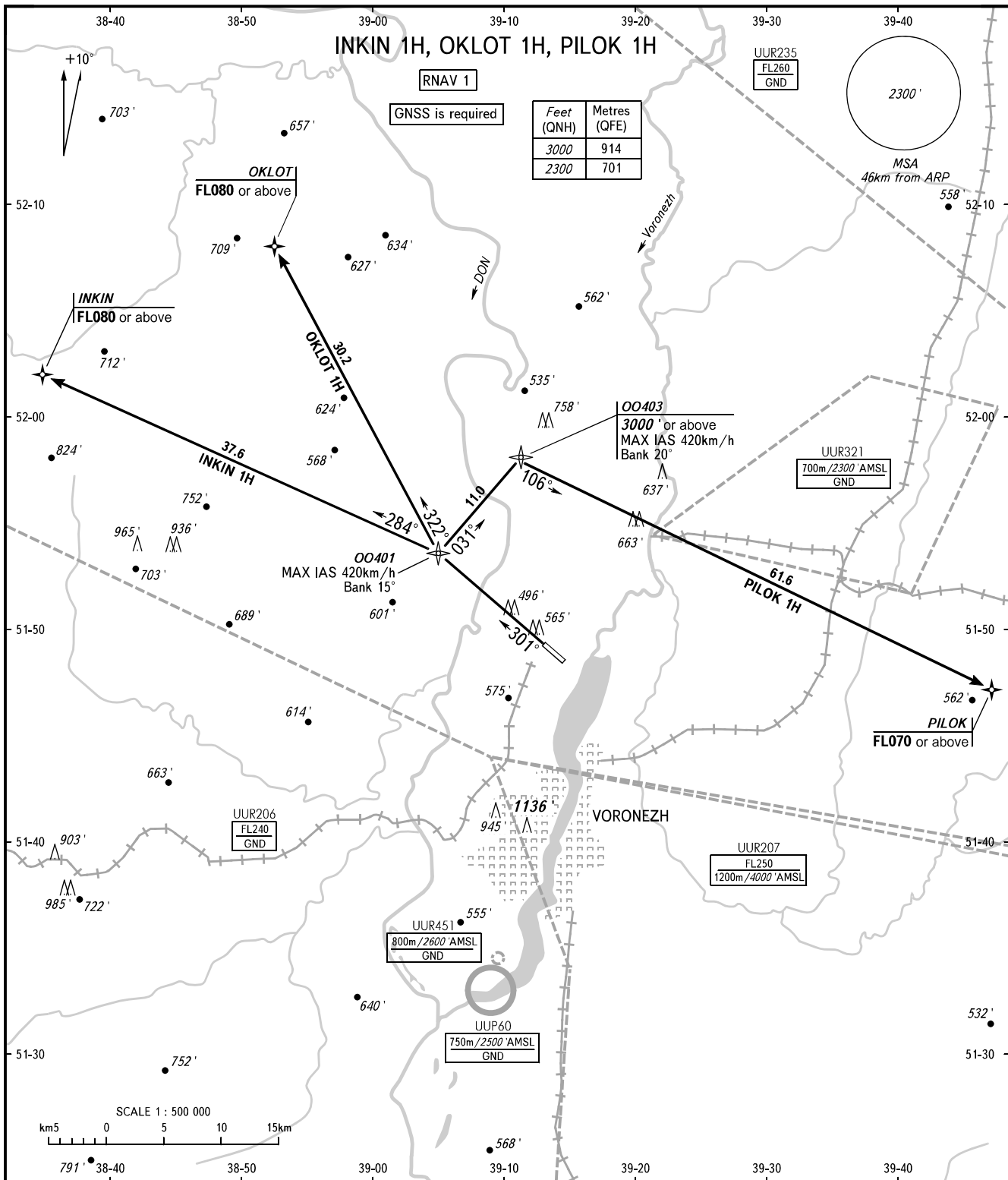


STANDARD DEPARTURE CHART
INSTRUMENT (SID) - ICAO

VORONEZH, RUSSIA
CHERTOVITSKOYE
RNAV RWY 30

TRANSITION
ALTITUDE: 5000'



Feet (QNH)	Metres (QFE)
3000	914
2300	701

TOWER 118.300
APPROACH 125.900

WARNING
MNM climb gradients due to the airspace structure:
- 4.7% up to FL080 for INKIN 1H;
- 5.5% up to FL080 for OKLOT 1H.

BEARINGS AND TRACKS ARE MAGNETIC
ALTITUDES AND ELEVATIONS IN FEET
DISTANCES IN KILOMETRES

Alt set: -QNH(QFE on req);
-hPa(mm on req).