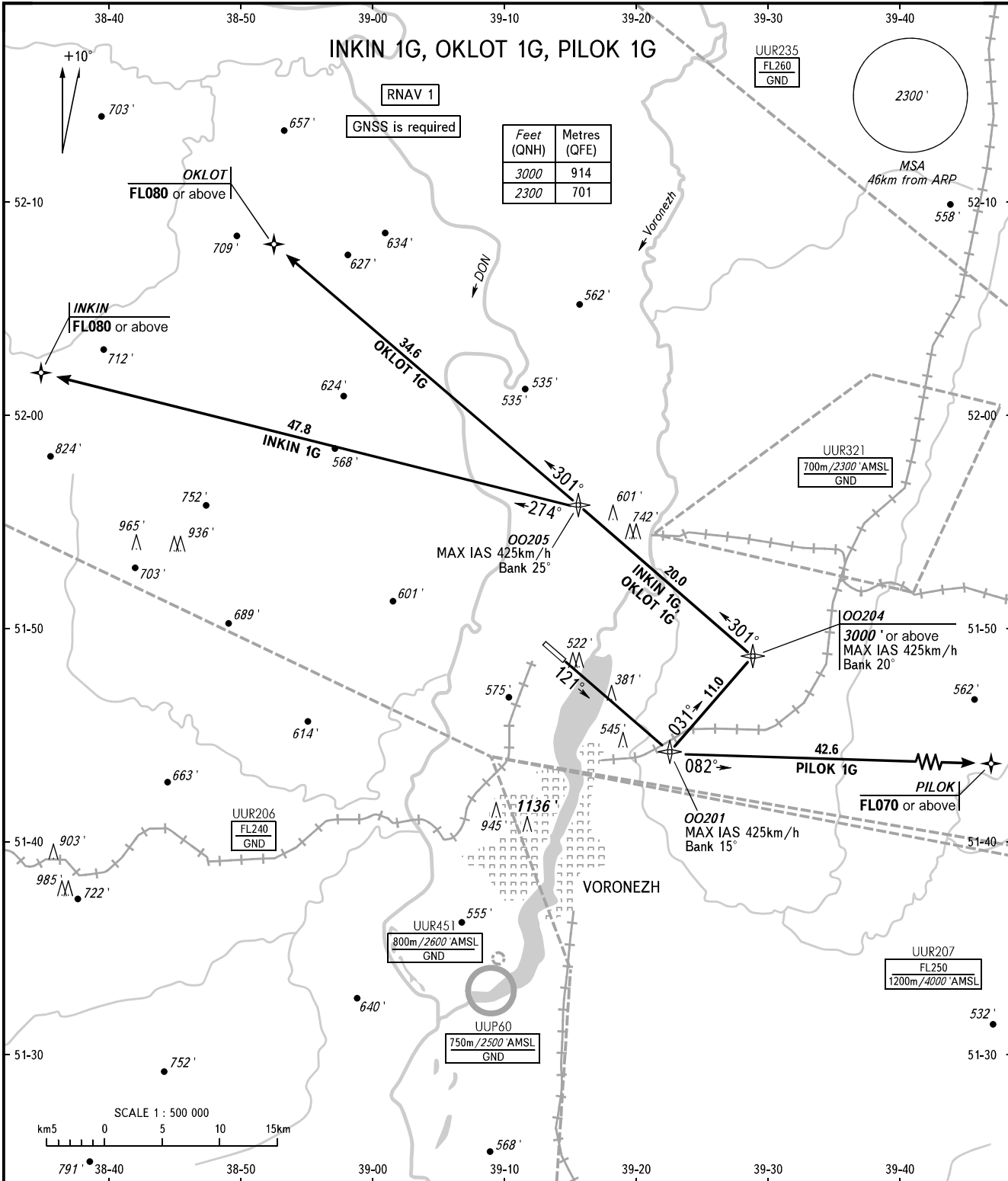


STANDARD DEPARTURE CHART
INSTRUMENT (SID) - ICAO

VORONEZH, RUSSIA
CHERTOVITSKOYE
RNAV RWY 12

TRANSITION
ALTITUDE: 5000'



| Feet (QNH) | Metres (QFE) |
|------------|--------------|
| 3000 | 914 |
| 2300 | 701 |

TOWER 118.300
APPROACH 125.900

WARNING
MNM climb gradient due to the airspace structure:
- 3.7% up to FL070 for PILOK 1G.

BEARINGS AND TRACKS ARE MAGNETIC
ALTITUDES AND ELEVATIONS IN FEET
DISTANCES IN KILOMETRES

Alt set: -QNH(QFE on req);
-hPa(mm on req).

CHANGE: New chart