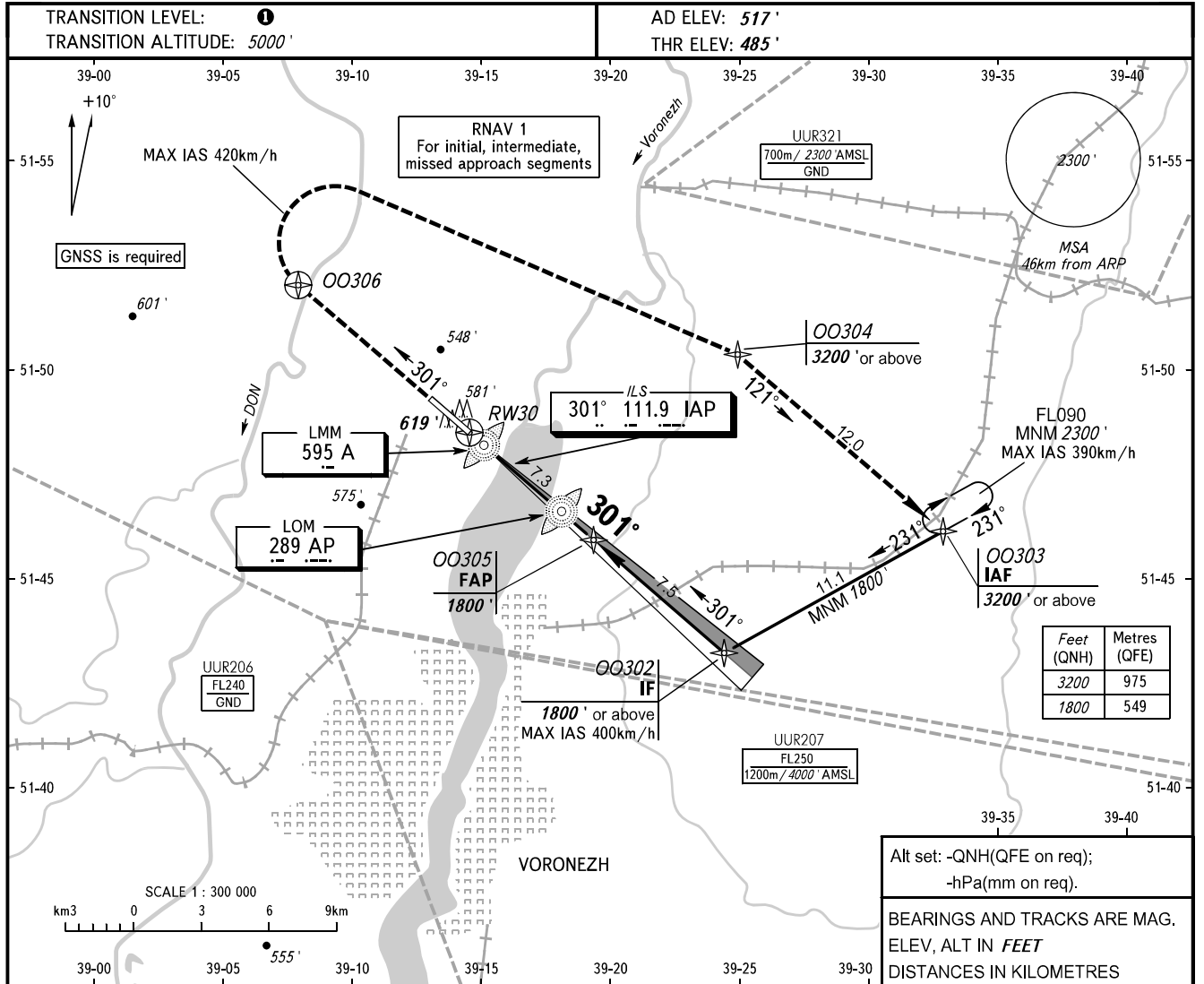


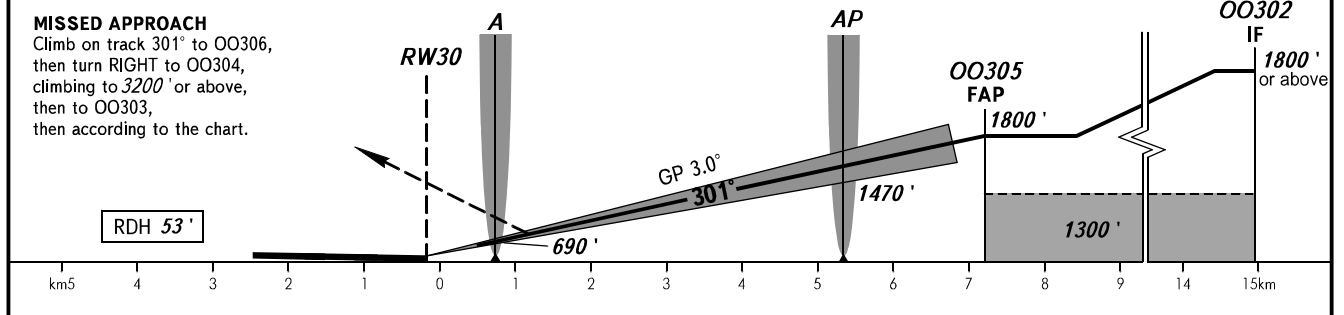
**INSTRUMENT
APPROACH
CHART - ICAO**

**VORONEZH, RUSSIA
CHERTOVITSKOYE
ILS Z RWY 30 CAT I**

TOWER 118.300



DIST to RW30	2.0	4.0	6.0
ALTITUDE	890'	1230'	1570'



OCA(H)		A	B	C	D	① TRANSITION LEVEL:						
Straight-in	CAT I 2.5%	748' (263')	761' (271')	769' (284')	779' (294')	- FLO60 when QNH is 1013 hPa (760mm mercury column) or above;						
	CAT I 4.0%	689' (204')	702' (217')	710' (225')	720' (235')	- FLO70 when QNH is 977 hPa (733mm mercury column) or above, but less than 1013 hPa (760mm mercury column);						
Approach						- FLO80 when QNH is less than 977 hPa (733mm mercury column).						
Circling		1000' (478')	1010' (493')	1130' (606')	1210' (689')							
GROUND SPEED	km/h	150	180	210	240	270	300	330	360	390	420	450
RATE OF DESCENT	m/s	2.2	2.6	3.0	3.5	3.9	4.3	4.8	5.2	5.6	6.1	6.5
	ft/min	427	512	597	682	768	853	938	1024	1109	1194	1280