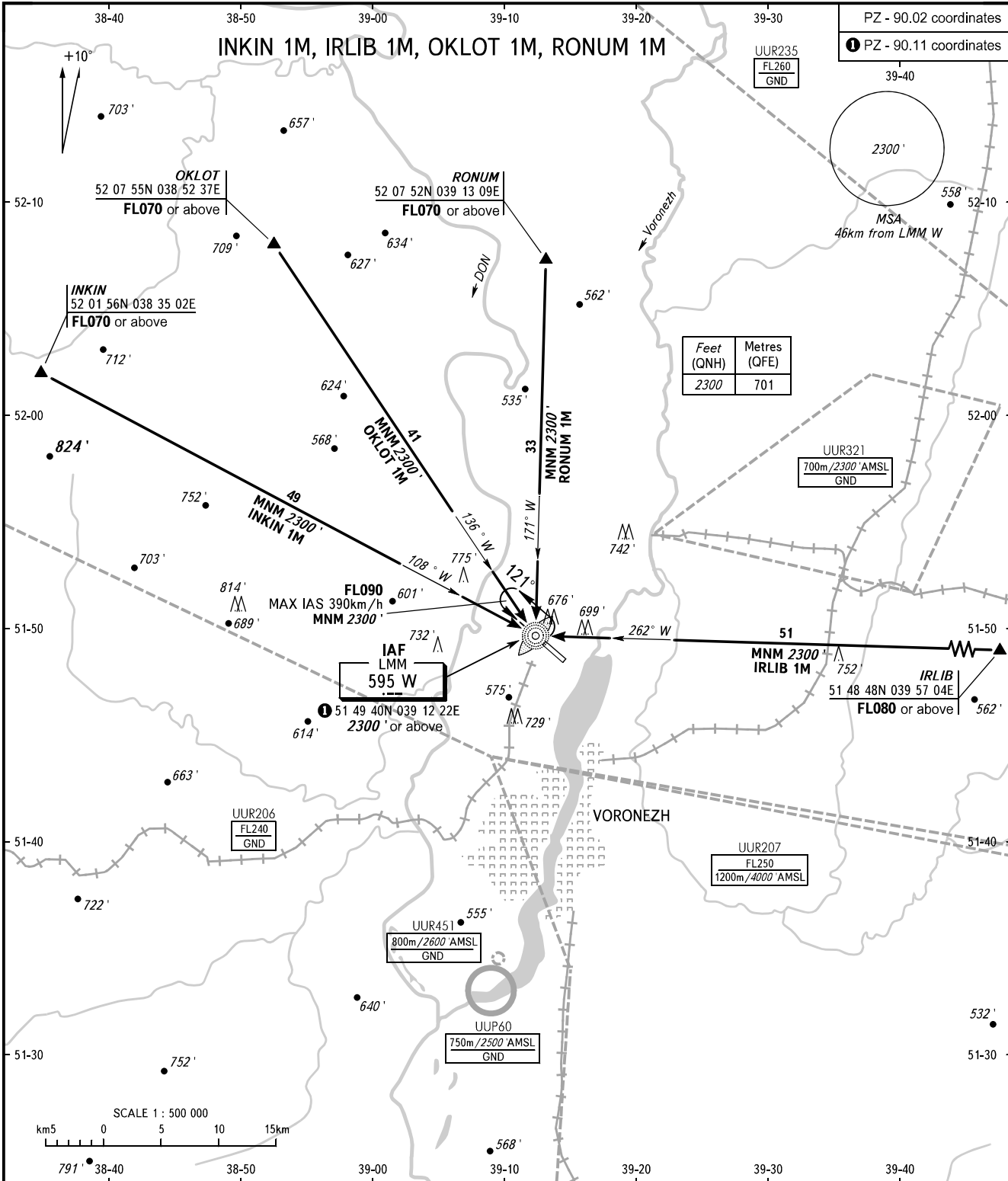


STANDARD ARRIVAL CHART
INSTRUMENT (STAR) - ICAO

VORONEZH, RUSSIA
CHERTOVITSKOYE
RWY 12

TRANSITION
LEVEL: **1**



Feet (QNH)	Metres (QFE)
2300	701

APPROACH TOWER **125.900**
118.300

1 TRANSITION LEVEL:
 - FL060 when QNH is 1013 hPa (760mm mercury column) or above;
 - FL070 when QNH is 977 hPa (733mm mercury column) or above, but less than 1013 hPa (760mm mercury column);
 - FL080 when QNH is less than 977 hPa (733mm mercury column).
WARNING
 Holding area is AVBL, when UUR206, UUR207 are not active.

BEARINGS AND TRACKS ARE MAGNETIC
ALTITUDES AND ELEVATIONS IN FEET
DISTANCES IN KILOMETRES

Alt set: -QNH(QFE on req);
-hPa(mm on req).

CHANGE: New chart