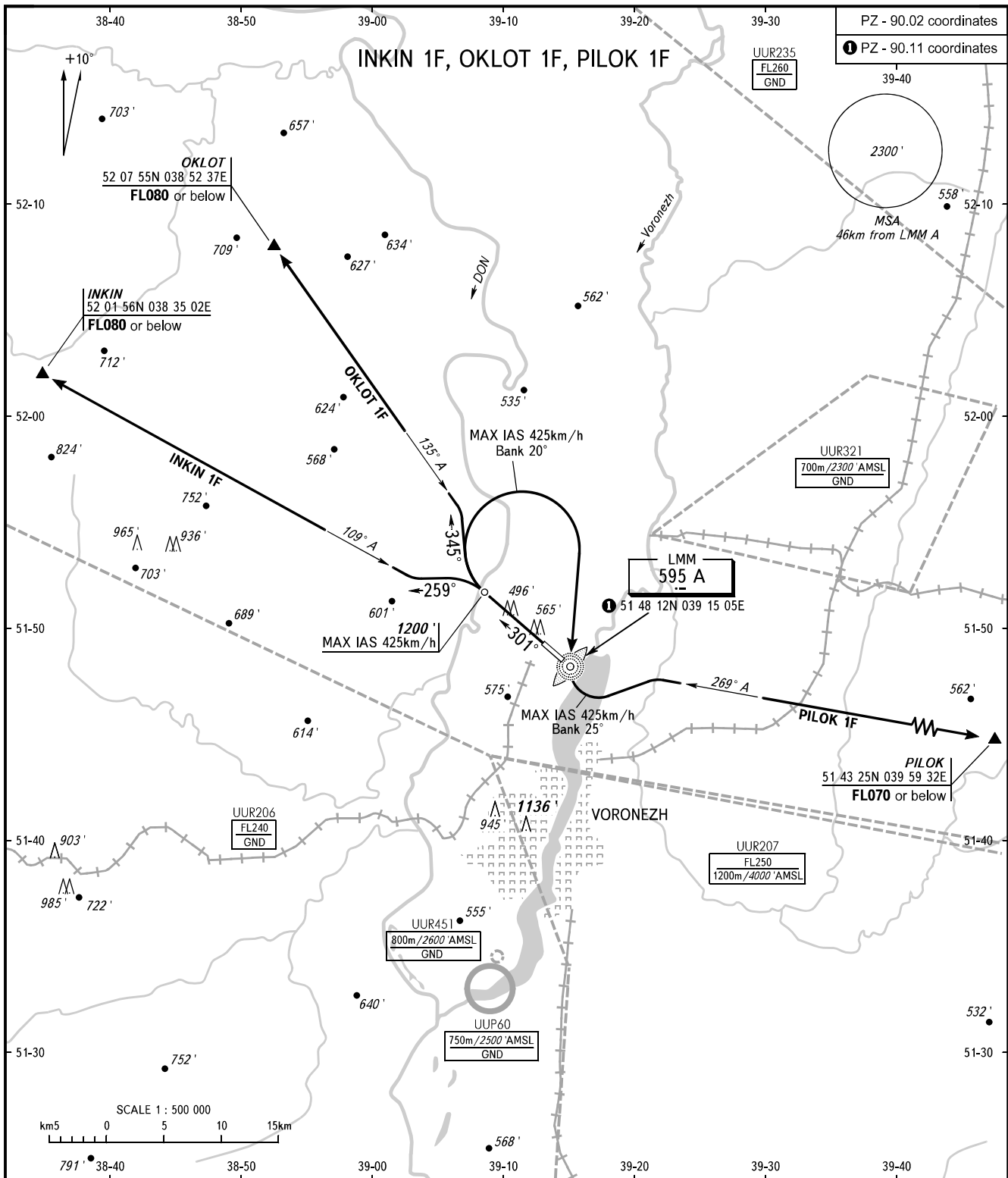


STANDARD DEPARTURE CHART  
INSTRUMENT (SID) - ICAO

TRANSITION  
ALTITUDE: 5000'

VORONEZH, RUSSIA  
CHERTOVITSKOYE  
RWY 30



TOWER 118.300  
APPROACH 125.900

**WARNING**  
MNM climb gradients due to the airspace structure:  
- 4.7% up to FL080 for INKIN 1F;  
- 5.5% up to FL080 for OKLOT 1F.

BEARINGS AND TRACKS ARE MAGNETIC  
ALTITUDES AND ELEVATIONS IN FEET  
DISTANCES IN KILOMETRES

Alt set: -QNH(QFE on req);  
-hPa(mm on req).