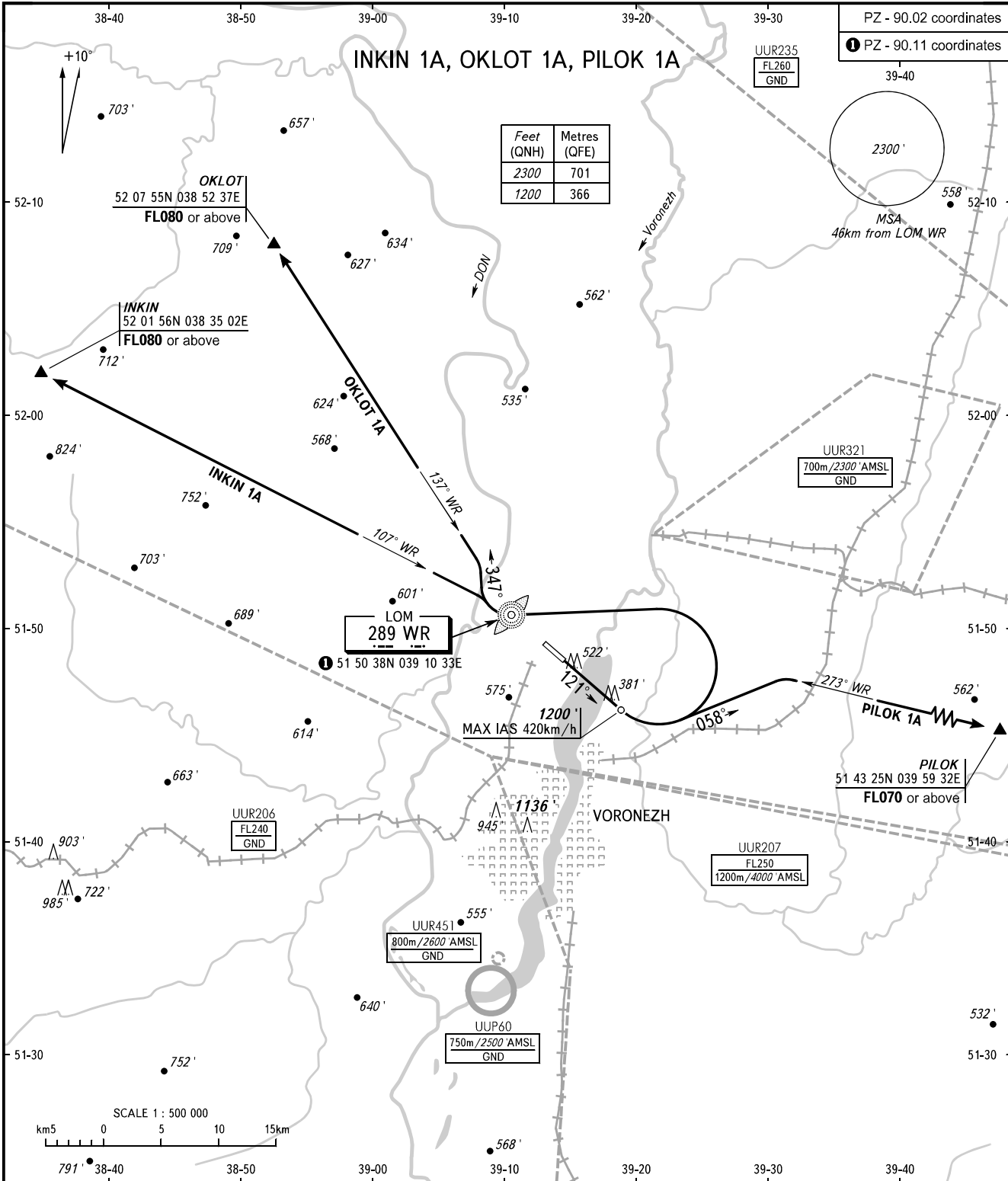


STANDARD DEPARTURE CHART  
INSTRUMENT (SID) - ICAO

TRANSITION  
ALTITUDE: 5000'

VORONEZH, RUSSIA  
CHERTOVITSKOYE  
RWY 12



TOWER APPROACH 118.300  
125.900

**WARNING**  
MNM climb gradient due to the airspace structure:  
- 3.7% up to FL070 for PILOK 1A.

BEARINGS AND TRACKS ARE MAGNETIC  
ALTITUDES AND ELEVATIONS IN FEET  
DISTANCES IN KILOMETRES

Alt set: -QNH(QFE on req);  
-hPa(mm on req).