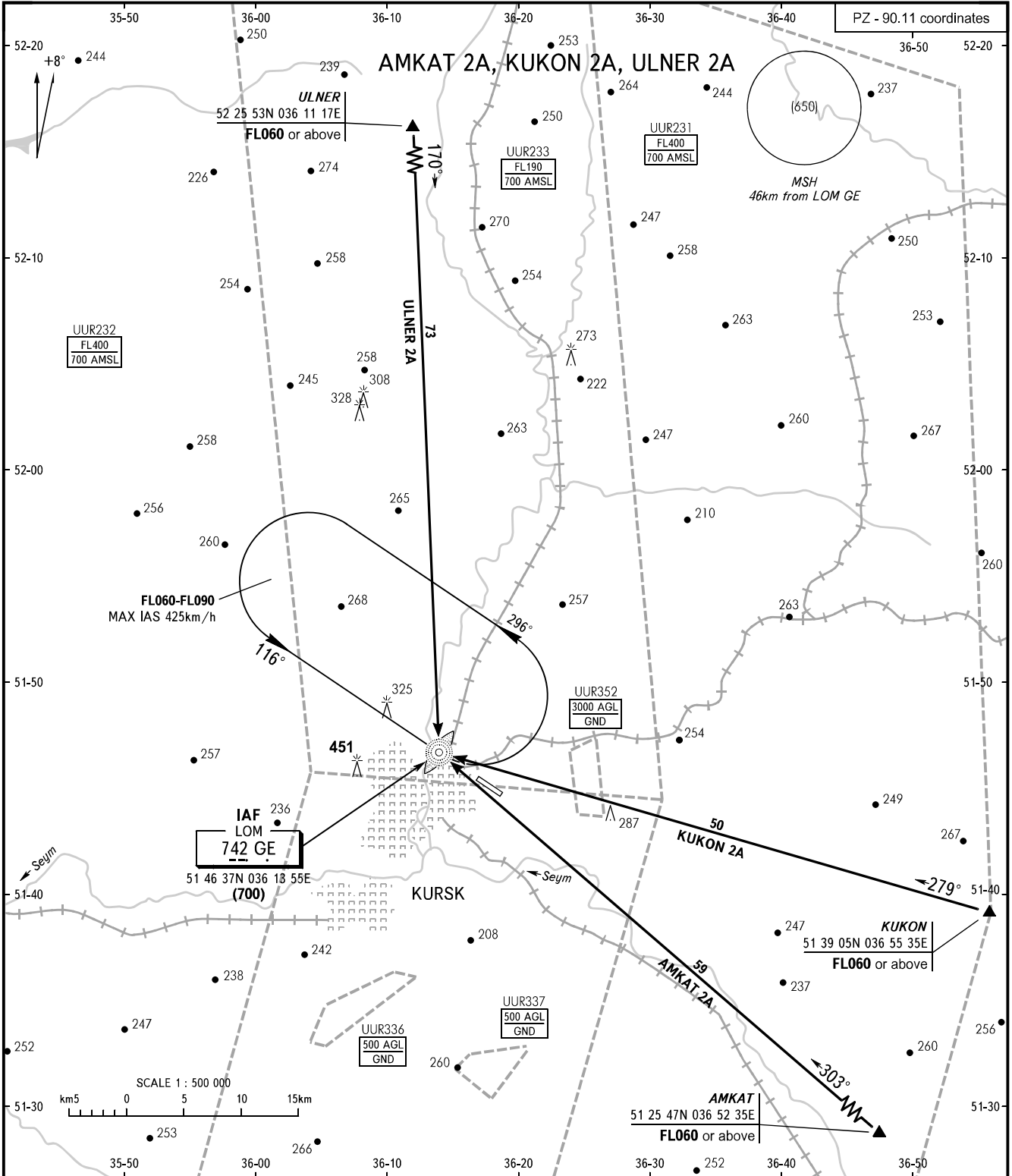


STANDARD ARRIVAL CHART  
INSTRUMENT (STAR) - ICAO

KURSK, RUSSIA  
VOSTOCHNY  
RWY 12

TRANSITION  
LEVEL : ①



APPROACH 131.500

① TRANSITION LEVEL:  
 - FL050 when atmospheric pressure is 741mm mercury column or above;  
 - FL060 when atmospheric pressure is less than 741mm mercury column.

BEARINGS AND TRACKS ARE MAGNETIC  
ALTITUDES, HEIGHTS AND ELEVATIONS ARE IN METRES  
DISTANCES ARE IN KILOMETRES

CHANGE: New chart