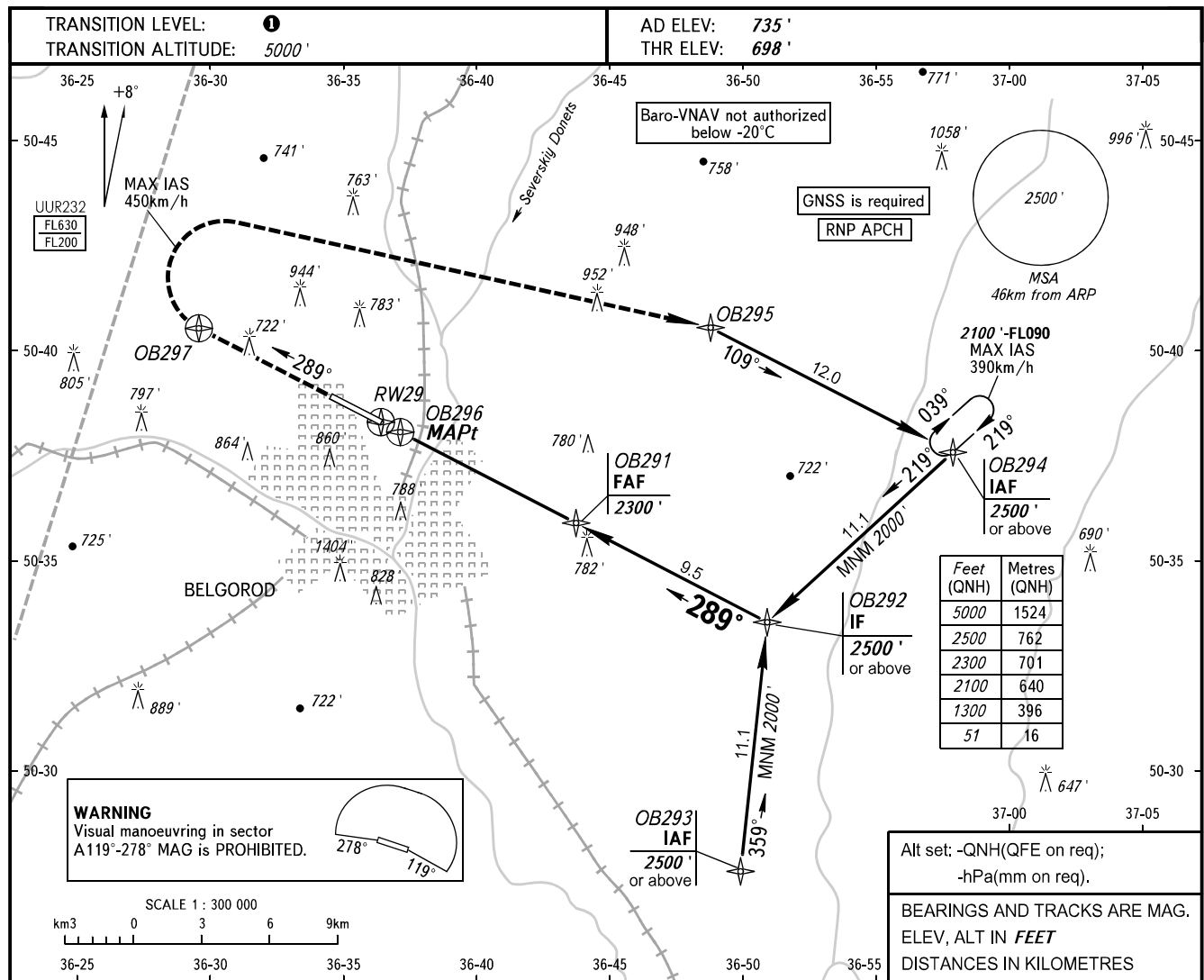


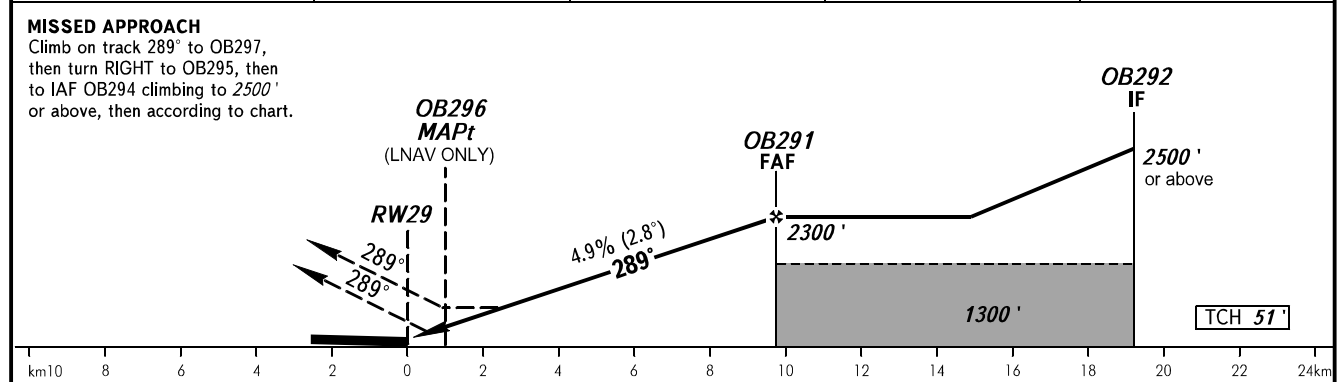
**INSTRUMENT
APPROACH
CHART - ICAO**

**BELGOROD, RUSSIA
BELGOROD
RNAV RWY 29**

TOWER **118.200**



| | | | | |
|--------------|-------|-------|-------|-------|
| DIST to RW29 | 2.0 | 4.0 | 6.0 | 8.0 |
| ALTITUDE | 1070' | 1380' | 1700' | 2010' |



| OCA(H) | | A | B | C | D | | | | | |
|----------------------|-----------|--------------|--------------|--------------|--------------|-----|-----|-----|------|------|
| Straight-in Approach | LNAV/VNAV | 919' (221') | 931' (233') | 940' (242') | 950' (252') | | | | | |
| | LNAV | 1020' (321') | 1020' (321') | 1020' (321') | 1020' (321') | | | | | |
| Circling | | 1200' (463') | 1240' (504') | 1340' (602') | 1340' (602') | | | | | |
| GROUND SPEED | km/h | 150 | 180 | 210 | 240 | 270 | 300 | 330 | 360 | 390 |
| RATE OF DESCENT | m/s | 2.2 | 2.6 | 3.0 | 3.6 | 6.9 | 4.3 | 4.8 | 5.2 | 5.6 |
| | ft/min | 427 | 512 | 597 | 682 | 768 | 853 | 938 | 1024 | 1109 |

1 **TRANSITION LEVEL:**
- FL060 when QNH is 1013 hPa (760mm mercury column) or above;
- FL070 when QNH is 977 hPa (733mm mercury column) or above, but less than 1013 hPa (760mm mercury column);
- FL080 when QNH is less than 977 hPa (733mm mercury column).