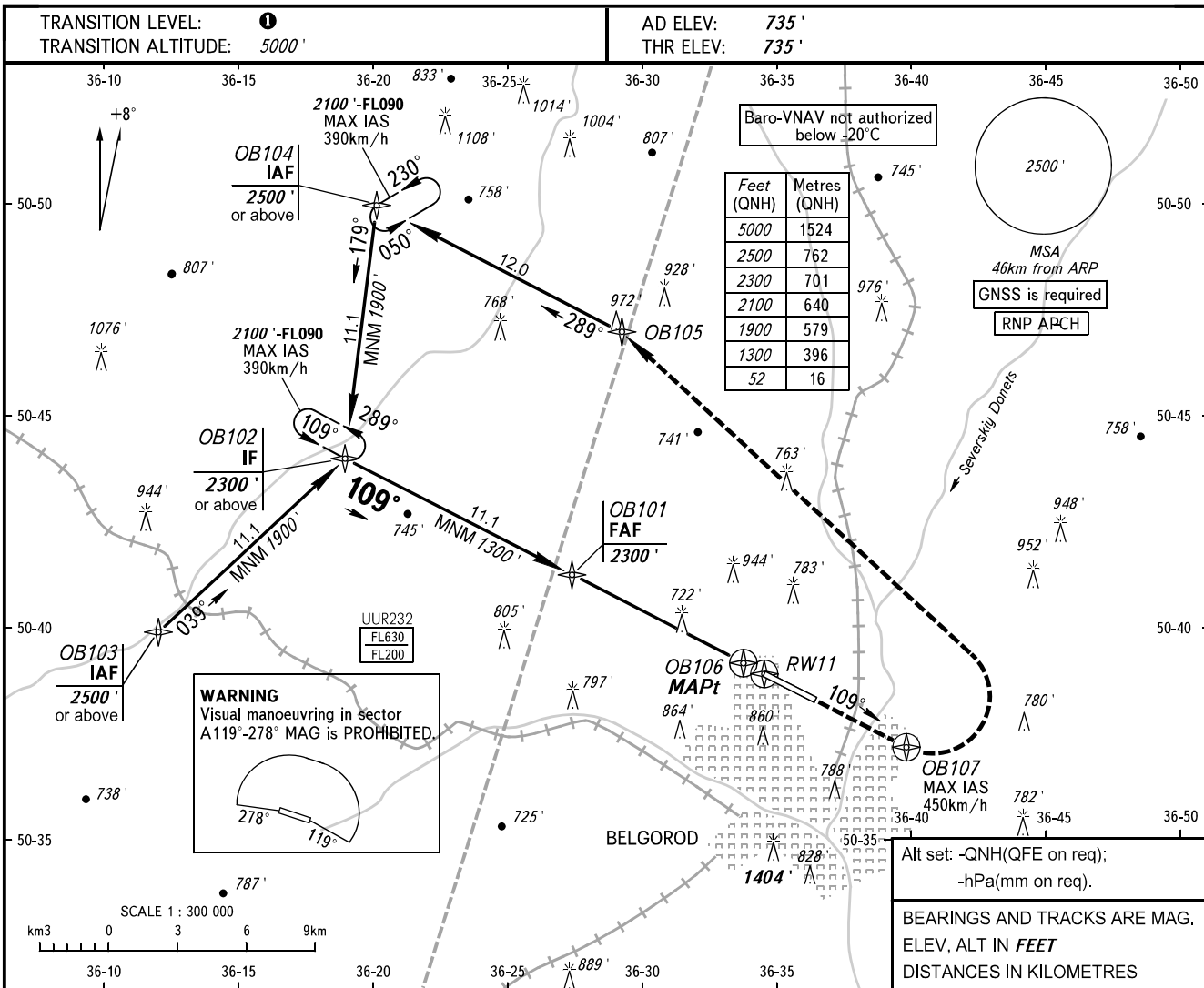


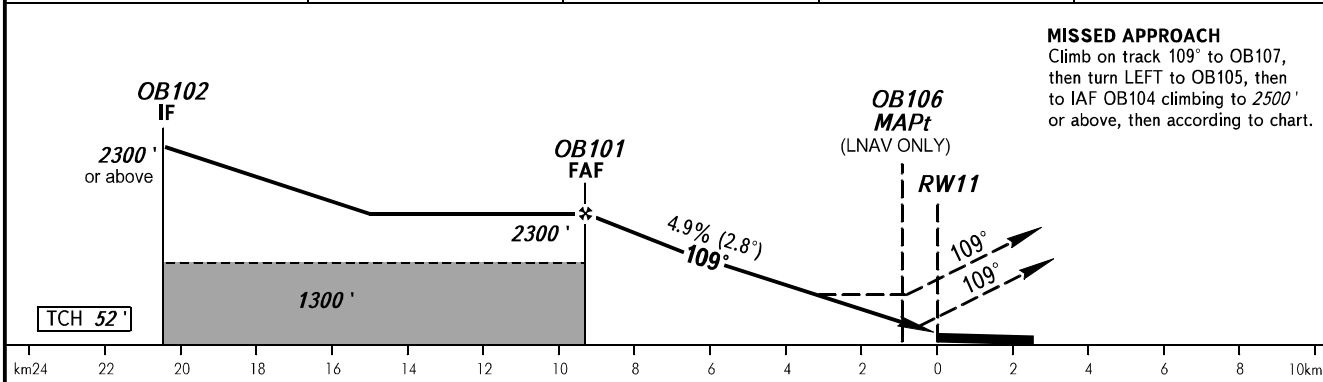
**INSTRUMENT
APPROACH
CHART - ICAO**

TOWER **118.200**

BELGOROD, RUSSIA
BELGOROD
RNAV RWY 11



DIST to RW11	8.0	6.0	4.0	2.0
ALTITUDE	2090'	1770'	1440'	1120'



MISSED APPROACH
Climb on track 109° to OB107, then turn LEFT to OB105, then to IAF OB104 climbing to 2500' or above, then according to chart.

OCA(H)		A	B	C	D	① TRANSITION LEVEL:					
Straight-in Approach	LNAV/VNAV	975' (240')	987' (252')	995' (260')	1005' (270')	- FL060 when QNH is 1013 hPa (760mm mercury column) or above;					
	LNAV	1065' (330')	1065' (330')	1065' (330')	1065' (330')	- FL070 when QNH is 977 hPa (733mm mercury column) or above, but less than 1013 hPa (760mm mercury column);					
Circling		1200' (463')	1240' (504')	1340' (602')	1340' (602')	- FL080 when QNH is less than 977 hPa (733mm mercury column).					
GROUND SPEED		km/h	150	180	210	240	270	300	330	360	390
RATE OF DESCENT		m/s	2.2	2.6	3.0	3.6	4.3	4.8	5.2	5.6	
		ft/min	427	512	597	682	768	853	938	1024	1109

CHANGE: New chart