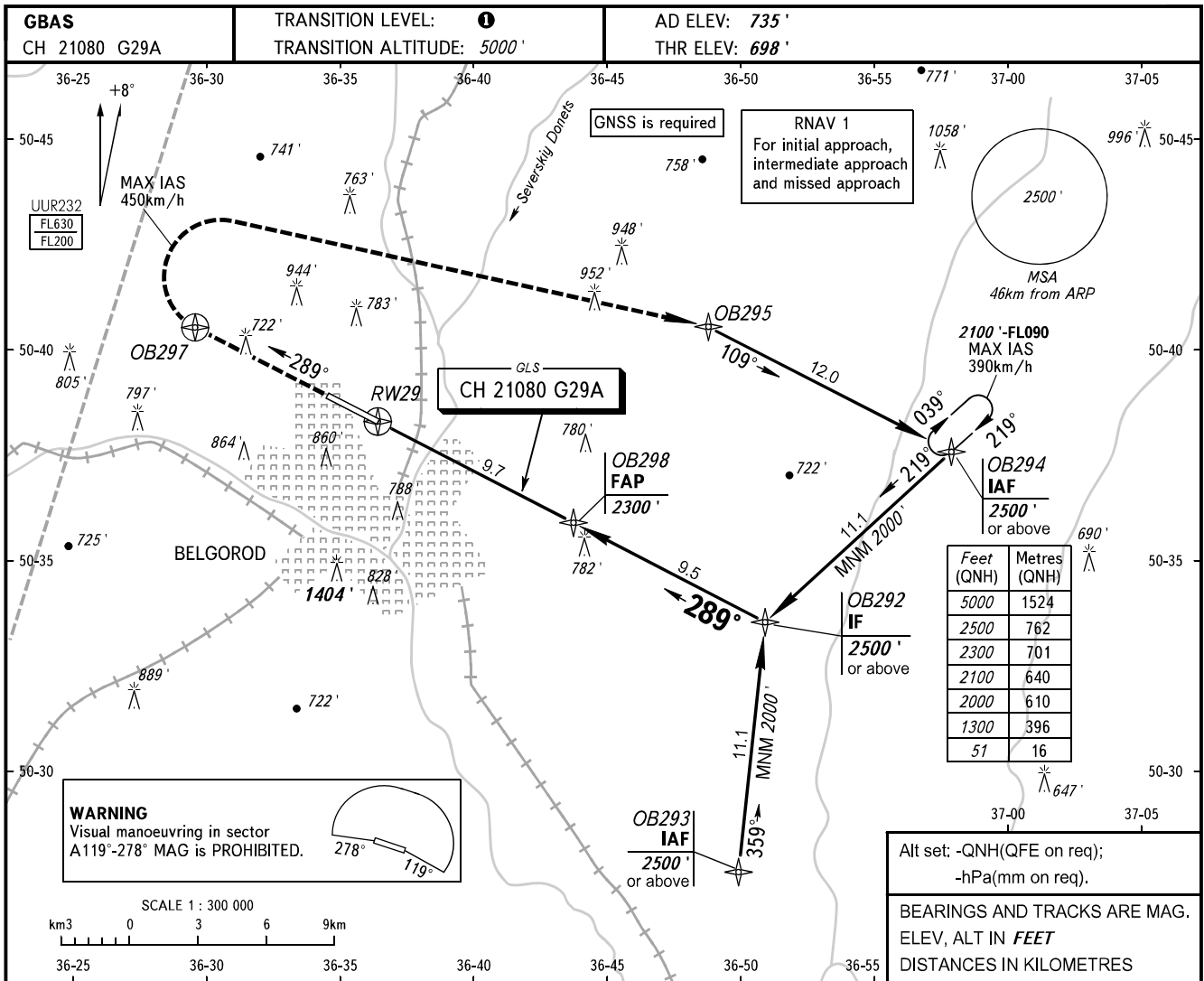


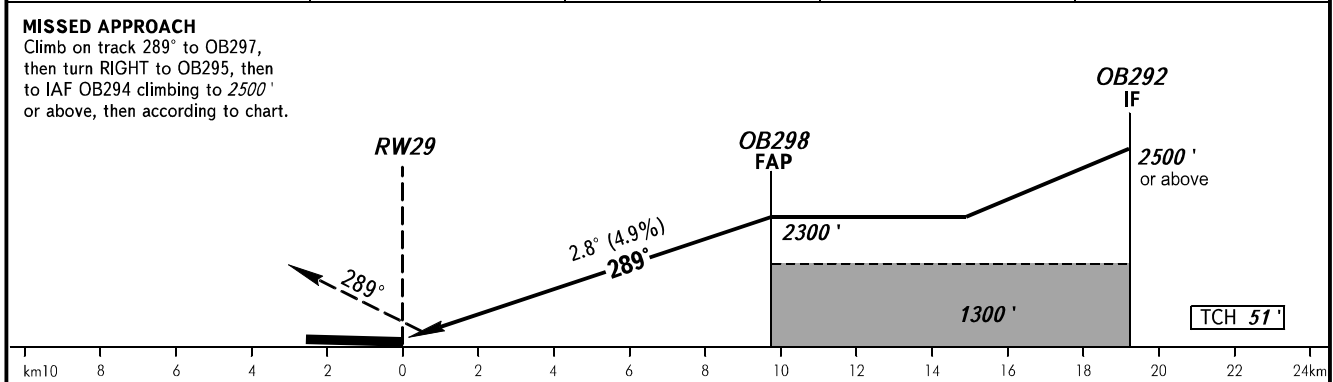
**INSTRUMENT
APPROACH
CHART - ICAO**

**BELGOROD, RUSSIA
BELGOROD
GLS RWY 29**

TOWER **118.200**



DIST to RW29	2.0	4.0	6.0	8.0
ALTITUDE	1070'	1380'	1700'	2010'



OCA(H)	MNM climb gradient	A				B				C				D			
		Straight-in		Approach		Straight-in		Approach		Straight-in		Approach		Straight-in		Approach	
Circling	2.5%	904' (206')	916' (218')	930' (231')	940' (242')	1200' (463')	1240' (504')	1340' (602')	1340' (602')	1200' (463')	1240' (504')	1340' (602')	1340' (602')	1200' (463')	1240' (504')	1340' (602')	1340' (602')
	4.0%	895' (197')	908' (209')	916' (217')	926' (228')	1200' (463')	1240' (504')	1340' (602')	1340' (602')	1200' (463')	1240' (504')	1340' (602')	1340' (602')	1200' (463')	1240' (504')	1340' (602')	1340' (602')
GROUND SPEED	km/h	150	180	210	240	270	300	330	360	390							
RATE OF DESCENT	m/s	2.2	2.6	3.0	3.5	3.9	4.3	4.8	5.2	5.6							
	ft/min	427	512	597	682	768	853	938	1024	1109							

1 TRANSITION LEVEL:
- FL060 when QNH is 1013 hPa (760mm mercury column) or above;
- FL070 when QNH is 977 hPa (733mm mercury column) or above, but less than 1013 hPa (760mm mercury column);
- FL080 when QNH is less than 977 hPa (733mm mercury column).

CHANGE: New chart