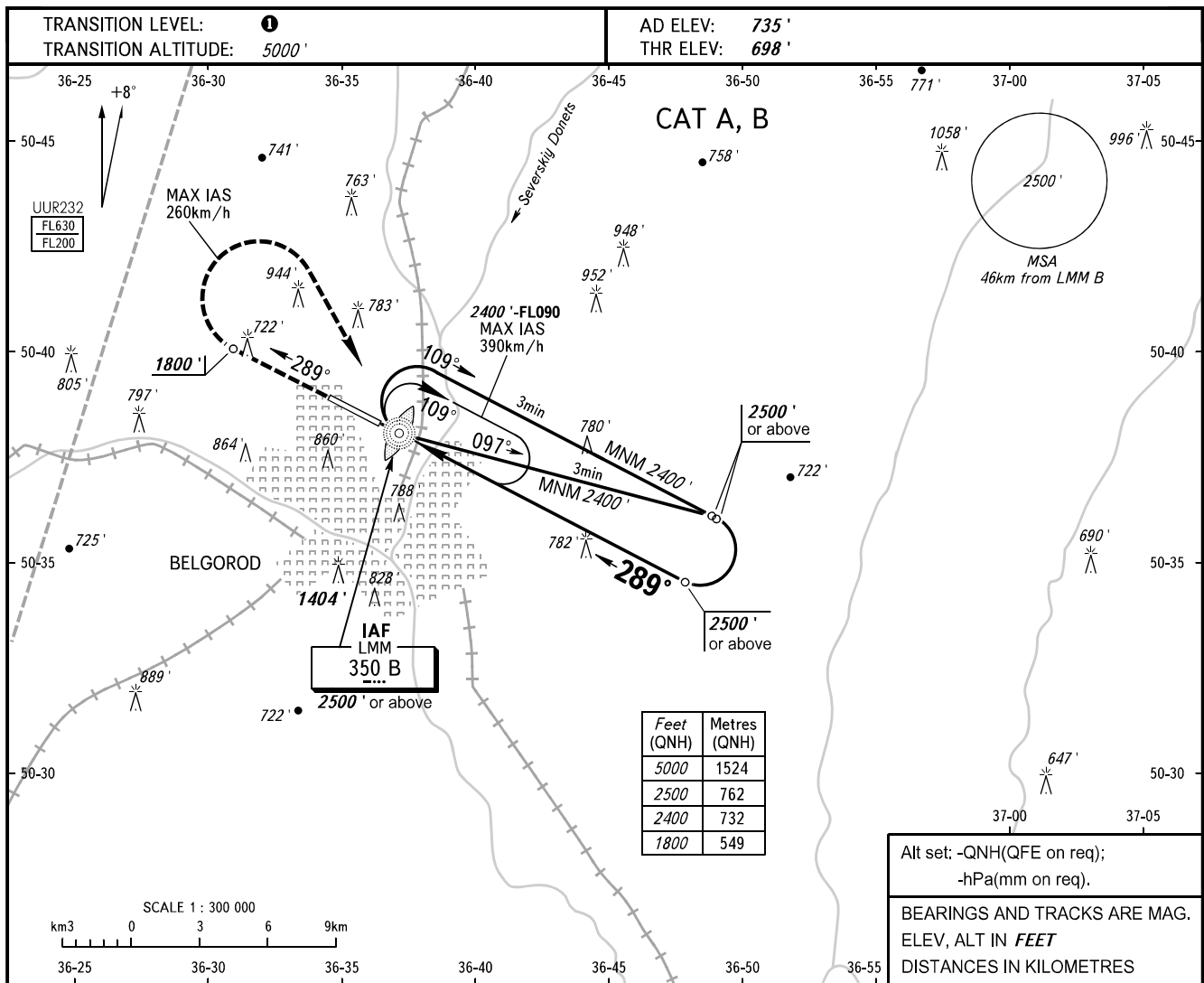


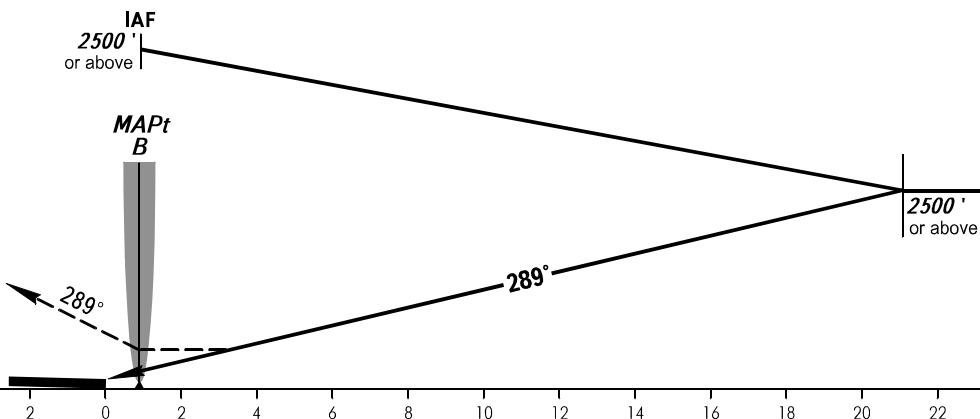
**INSTRUMENT
APPROACH
CHART - ICAO**

TOWER **118.200**

BELGOROD, RUSSIA
BELGOROD
NDB W RWY 29



MISSED APPROACH
Climb on track 289° to 1800', then turn RIGHT to LMM B climbing to 2500' or above, then according to chart.



OCA(H)		A	B	C	D
Straight-in Approach		1080' (378')	1080' (378')		
Circling		1200' (463')	1240' (504')		

1 TRANSITION LEVEL:
- FL060 when QNH is 1013 hPa (760mm mercury column) or above;
- FL070 when QNH is 977 hPa (733mm mercury column) or above, but less than 1013 hPa (760mm mercury column);
- FL080 when QNH is less than 977 hPa (733mm mercury column).

WARNING
Visual manoeuvring in sector A119°-278° MAG is PROHIBITED.

