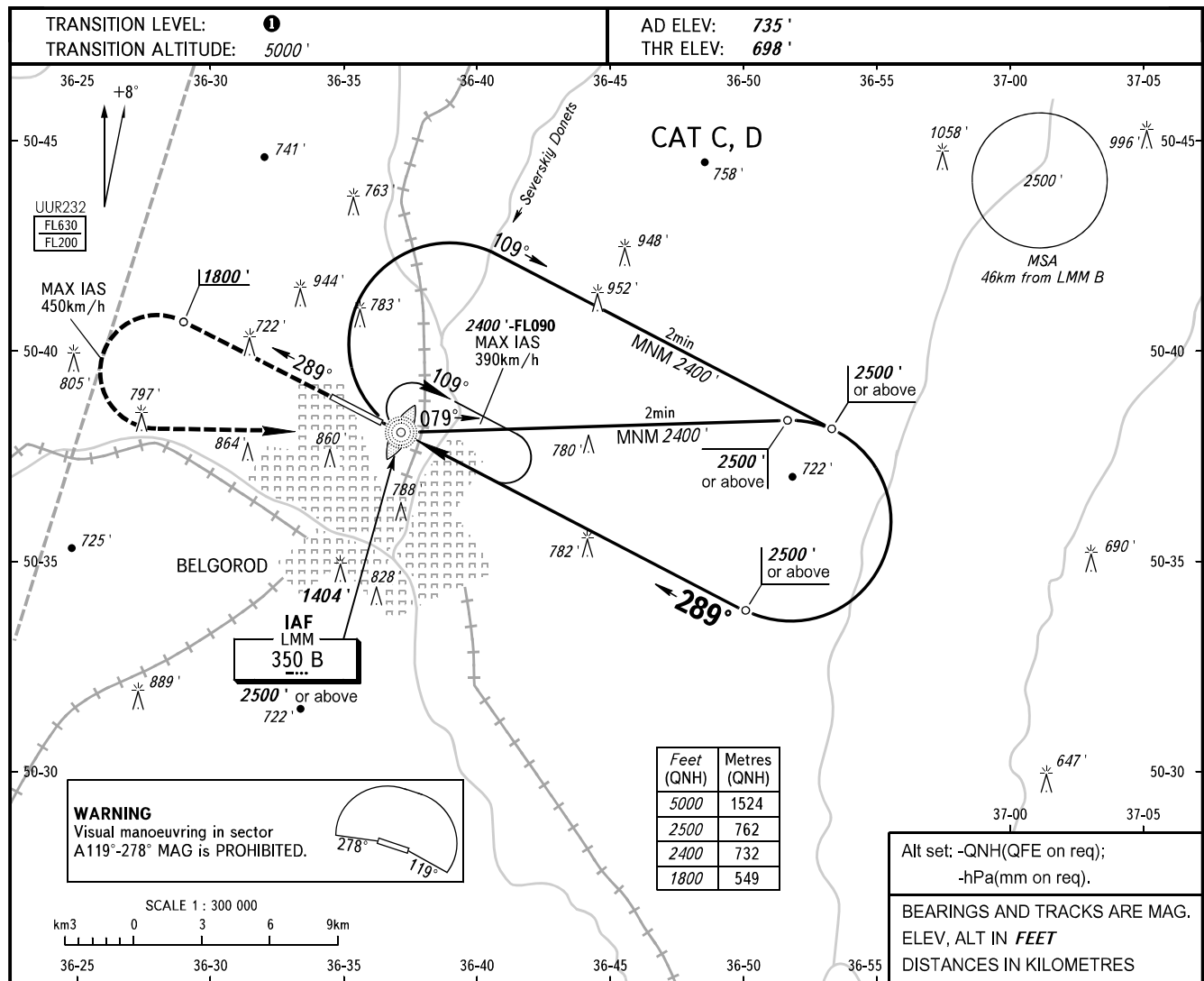


**INSTRUMENT
APPROACH
CHART - ICAO**

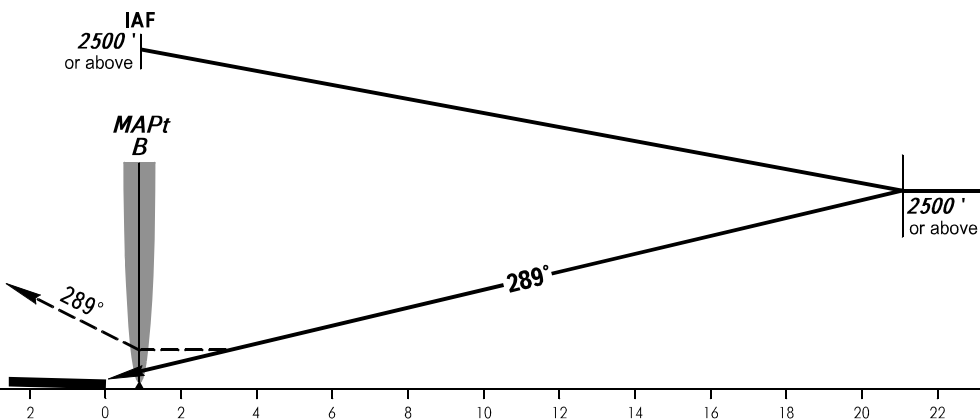
TOWER **118.200**

BELGOROD, RUSSIA
BELGOROD
NDB X RWY 29



MISSED APPROACH

Climb on track 289° to 1800',
then turn LEFT to LMM B
climbing to 2500' or above, then
according to chart.



OCA(H)		A	B	C	D
Straight-in Approach				1100' (396')	1100' (396')
Circling				1340' (602')	1340' (602')

- 1** TRANSITION LEVEL:
- FL060 when QNH is 1013 hPa (760mm mercury column) or above;
- FL070 when QNH is 977 hPa (733mm mercury column) or above, but less than 1013 hPa (760mm mercury column);
- FL080 when QNH is less than 977 hPa (733mm mercury column).