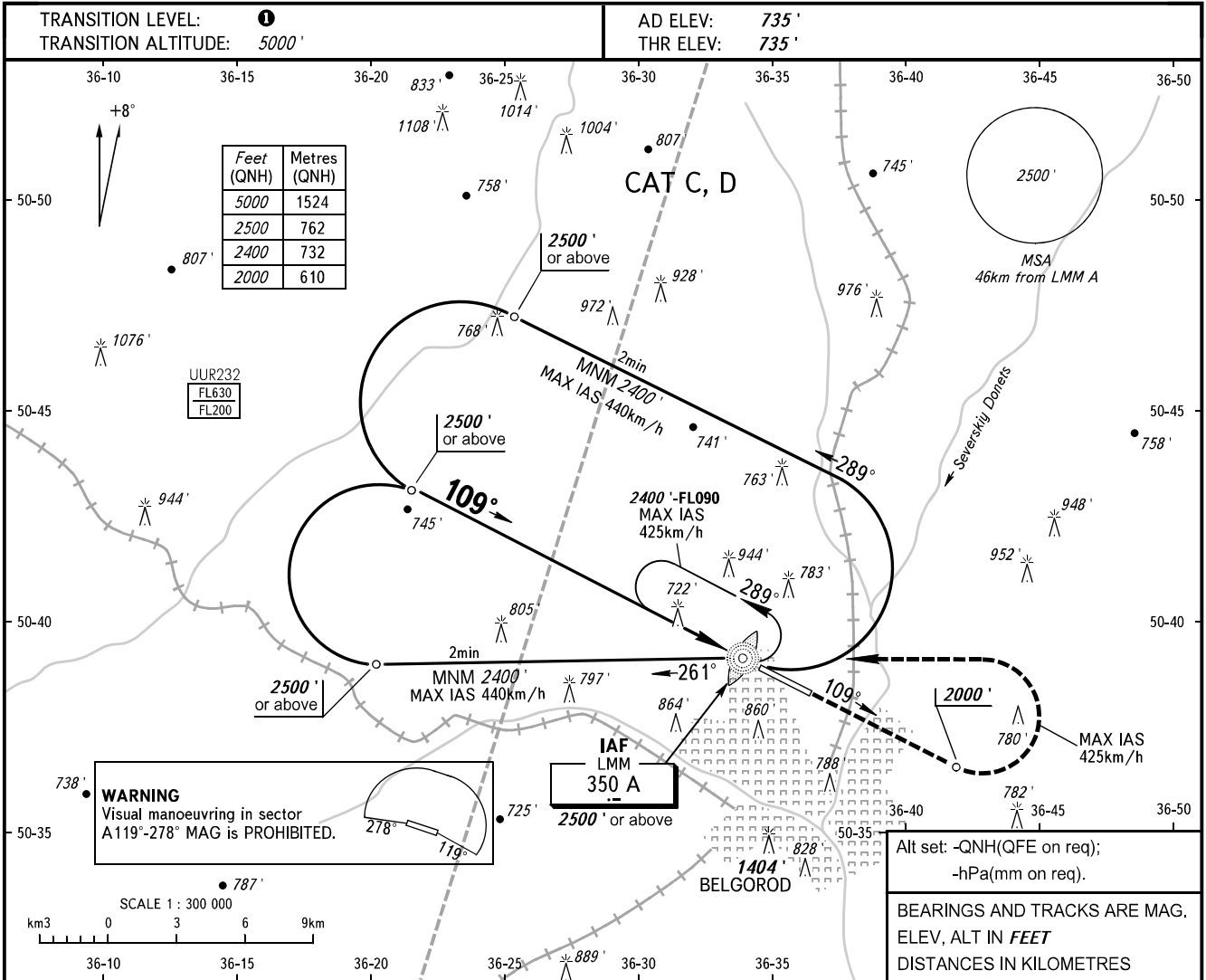


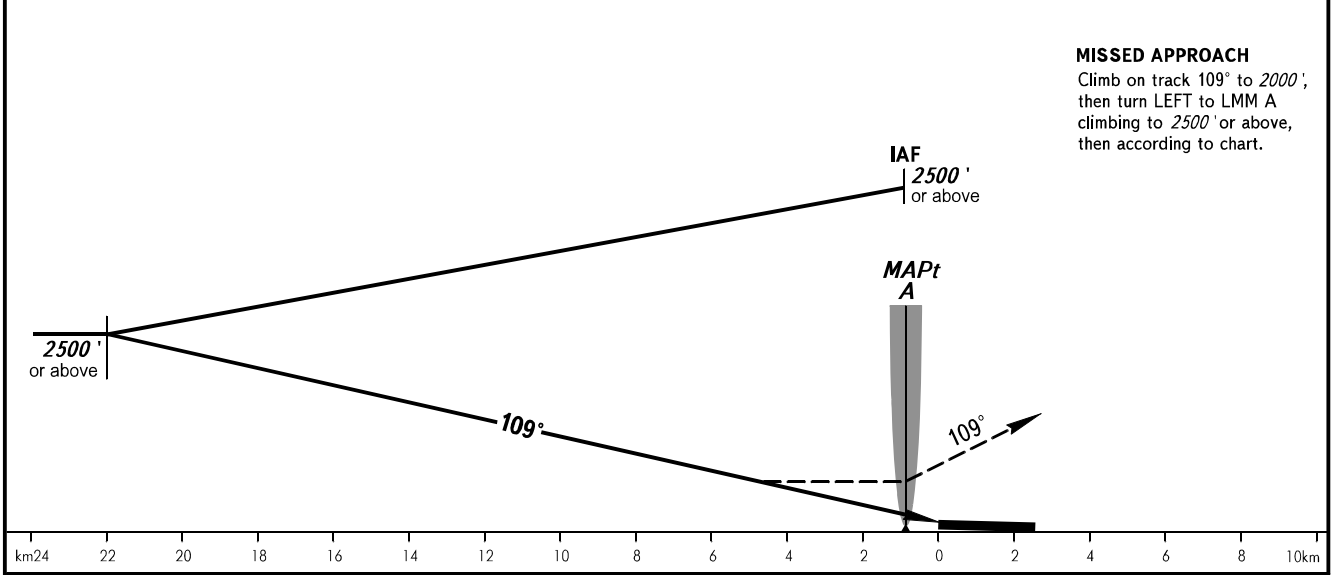
**INSTRUMENT
APPROACH
CHART - ICAO**

TOWER **118.200**

BELGOROD, RUSSIA
BELGOROD
NDB X RWY 11



MISSED APPROACH
Climb on track 109° to 2000'; then turn LEFT to LMM A climbing to 2500' or above, then according to chart.



OCA(H)	A	B	C	D
Straight-in Approach			1380' (636')	1380' (636')
Circling			1380' (636')	1380' (636')

TRANSITION LEVEL:
- FL060 when QNH is 1013 hPa (760mm mercury column) or above;
- FL070 when QNH is 977 hPa (733mm mercury column) or above, but less than 1013 hPa (760mm mercury column);
- FL080 when QNH is less than 977 hPa (733mm mercury column).

CHANGE: New chart