

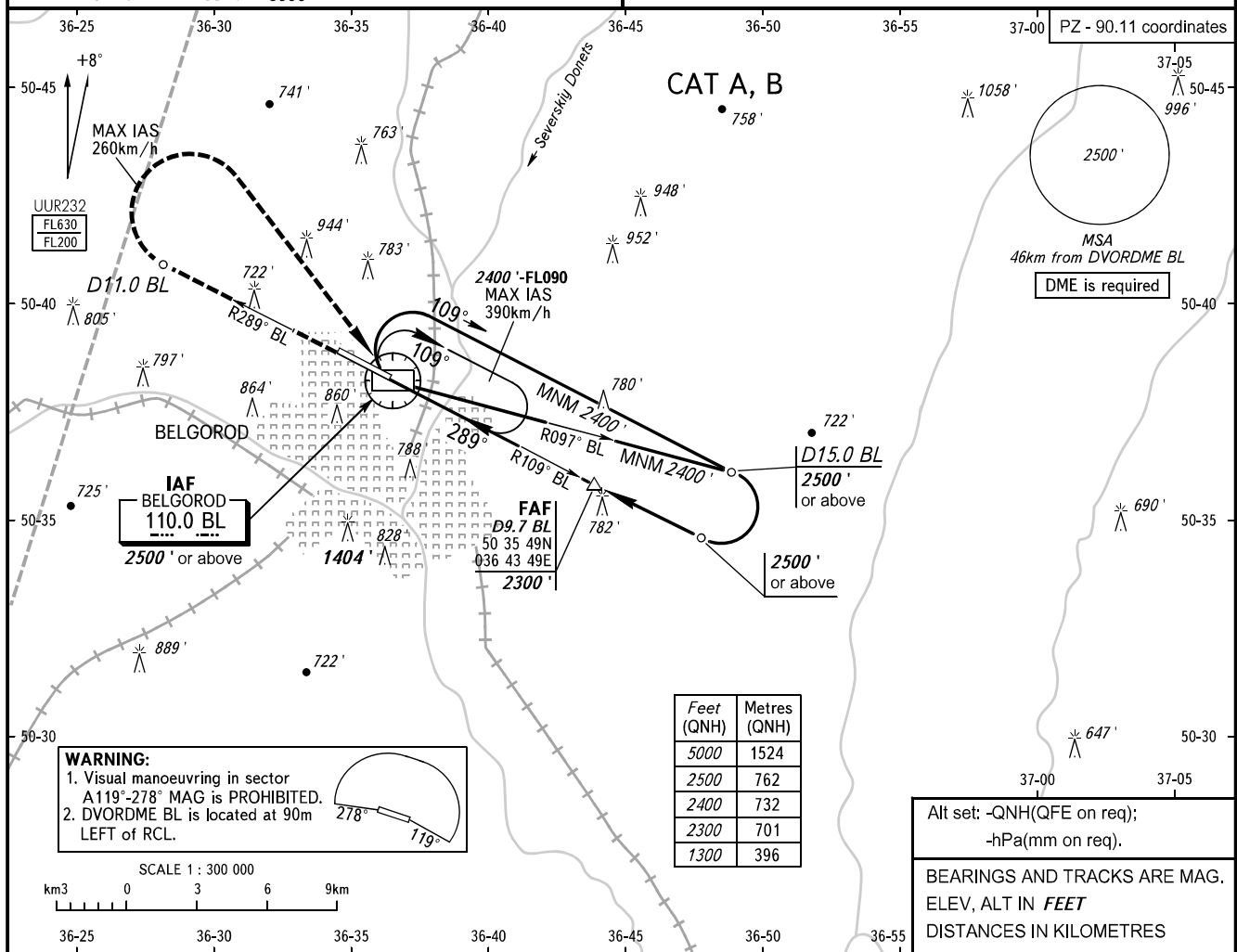
**INSTRUMENT
APPROACH
CHART - ICAO**

**BELGOROD, RUSSIA
BELGOROD
DVOR Y RWY 29**

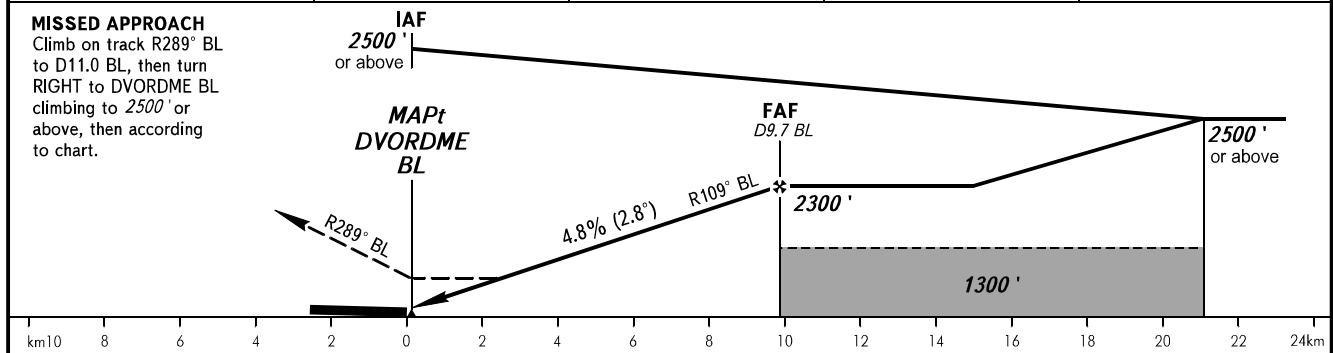
TOWER 118.200

TRANSITION LEVEL: **1**
TRANSITION ALTITUDE: 5000'

AD ELEV: 735'
THR ELEV: 698'



DIST to RW29	2.2	4.2	6.2	8.2
DME BL	2.0	4.0	6.0	8.0
ALTITUDE	1100'	1410'	1730'	2040'



OCA(H)		A	B	C	D	1 TRANSITION LEVEL: - FL060 when QNH is 1013 hPa (760mm mercury column) or above; - FL070 when QNH is 977 hPa (733mm mercury column) or above, but less than 1013 hPa (760mm mercury column); - FL080 when QNH is less than 977 hPa (733mm mercury column).					
Straight-in Approach		1050' (343')	1050' (343')								
Circling		1200' (463')	1240' (504')								
GROUND SPEED		km/h	150	180	210	240	270	300	330	360	390
RATE OF DESCENT		m/s	2.2	2.6	3.0	3.6	6.9	4.3	4.8	5.2	5.6
		ft/min	427	512	597	682	768	853	938	1024	1109