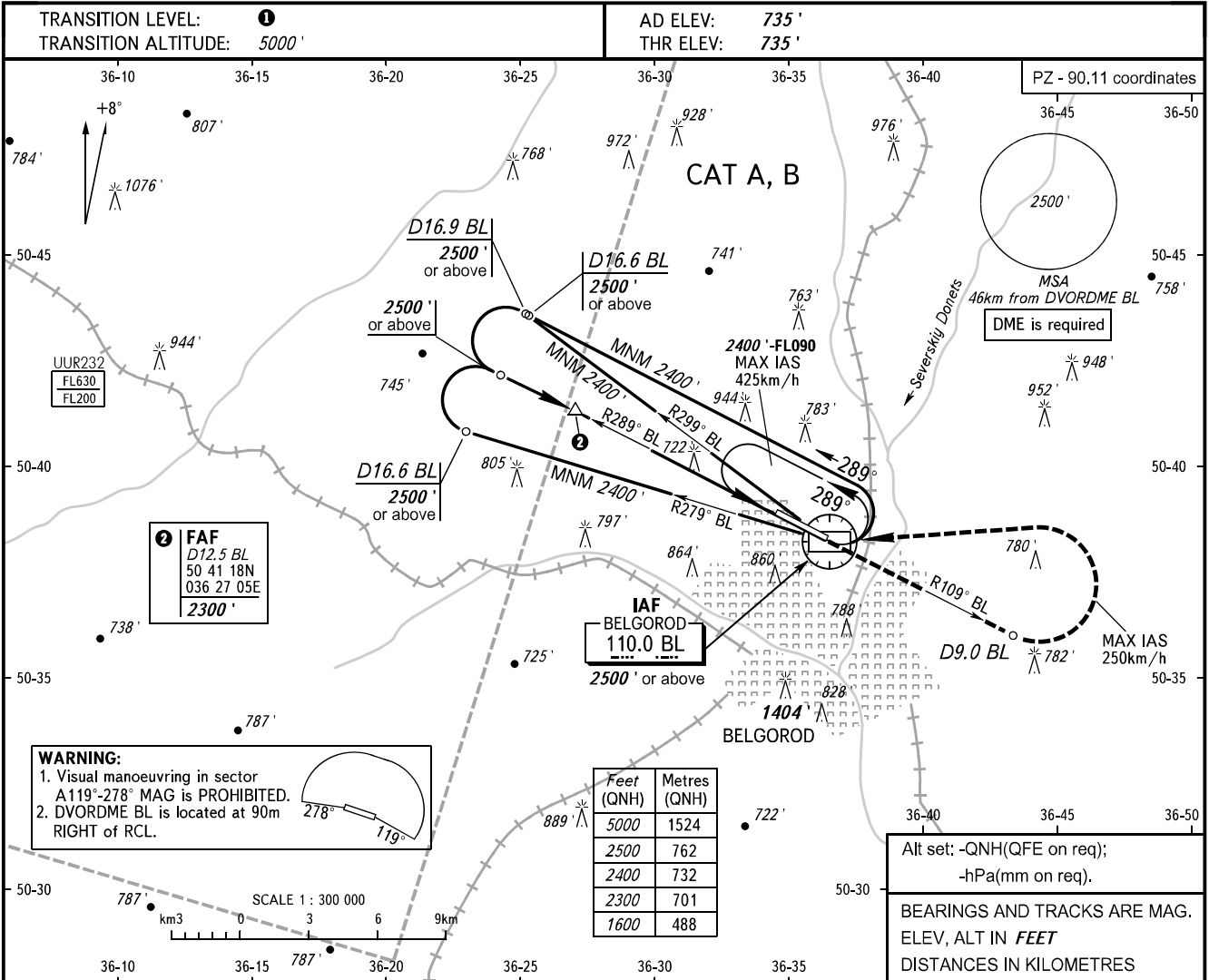


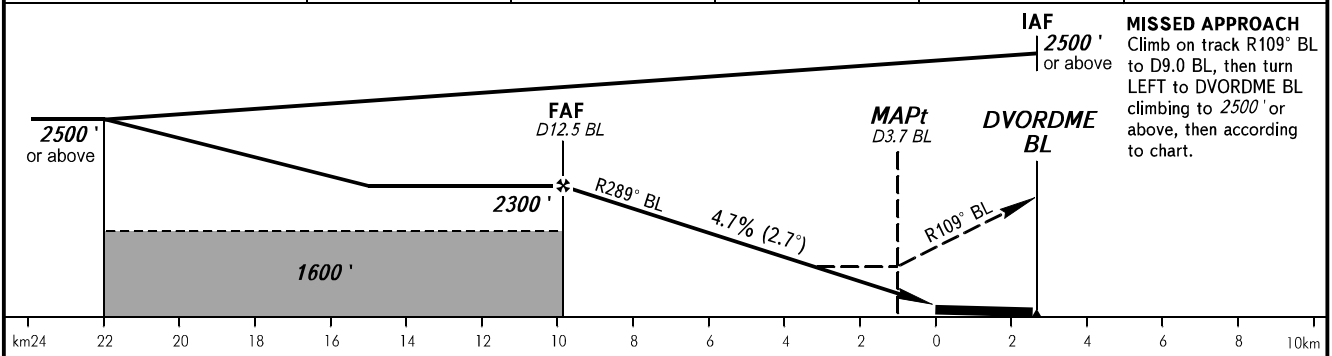
**INSTRUMENT
APPROACH
CHART - ICAO**

TOWER **118.200**

**BELGOROD, RUSSIA
BELGOROD
DVOR Y RWY 11**



DIST to RW11	9.4	7.4	5.4	3.4	1.4
DME BL	12.0	10.0	8.0	6.0	4.0
ALTITUDE	2210'	1910'	1600'	1290'	990'



OCA(H)	① TRANSITION LEVEL:									
	A	B	C	D						
Straight-in Approach	1080' (337')	1080' (337')								
Circling	1200' (463')	1240' (504')								
GROUND SPEED	km/h	150	180	210	240	270	300	330	360	390
RATE OF DESCENT	m/s	2.2	2.6	3.0	3.5	8.9	4.3	4.8	5.2	5.6
	ft/min	427	512	597	682	768	853	938	1024	1109

① TRANSITION LEVEL:
- FL060 when QNH is 1013 hPa (760mm mercury column) or above;
- FL070 when QNH is 977 hPa (733mm mercury column) or above, but less than 1013 hPa (760mm mercury column);
- FL080 when QNH is less than 977 hPa (733mm mercury column).

CHANGE: New chart